

# NexGen Keyboard Tray

## *Instructions*



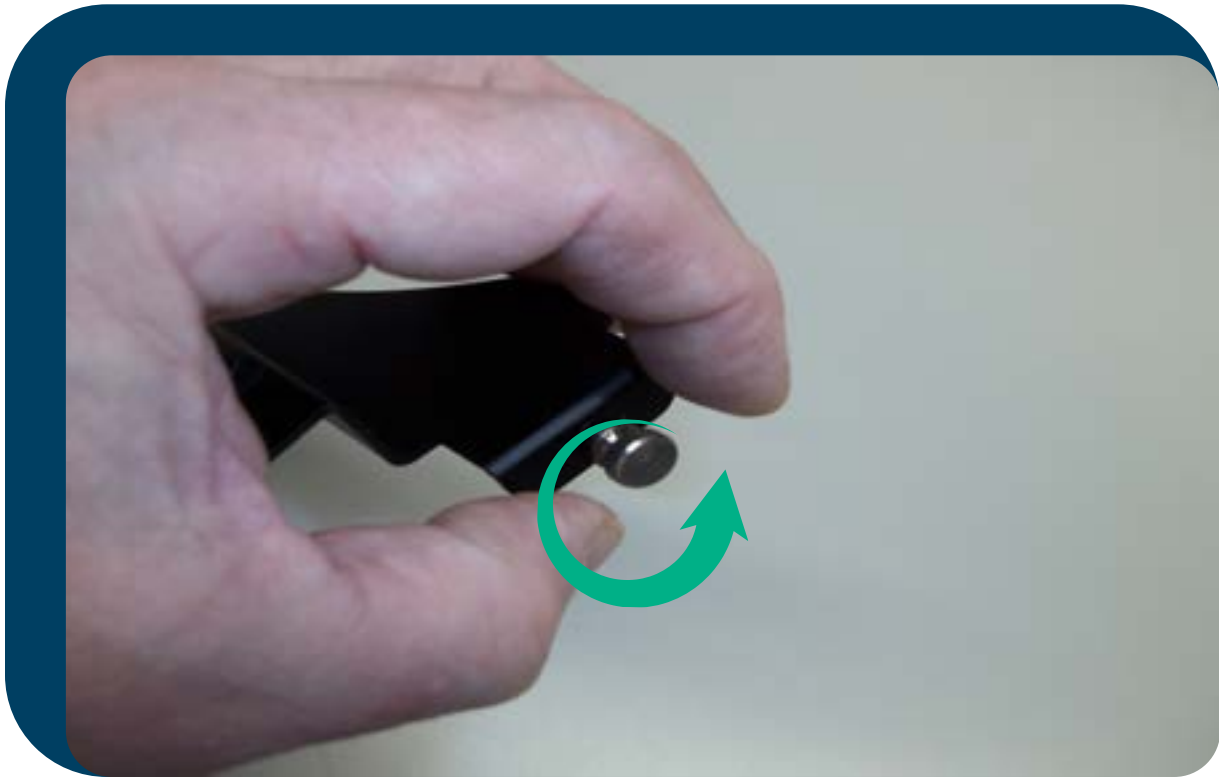
Keyboard Tray



Keyboard Tray with Keyboard Attached  
Keyboard NOT included.



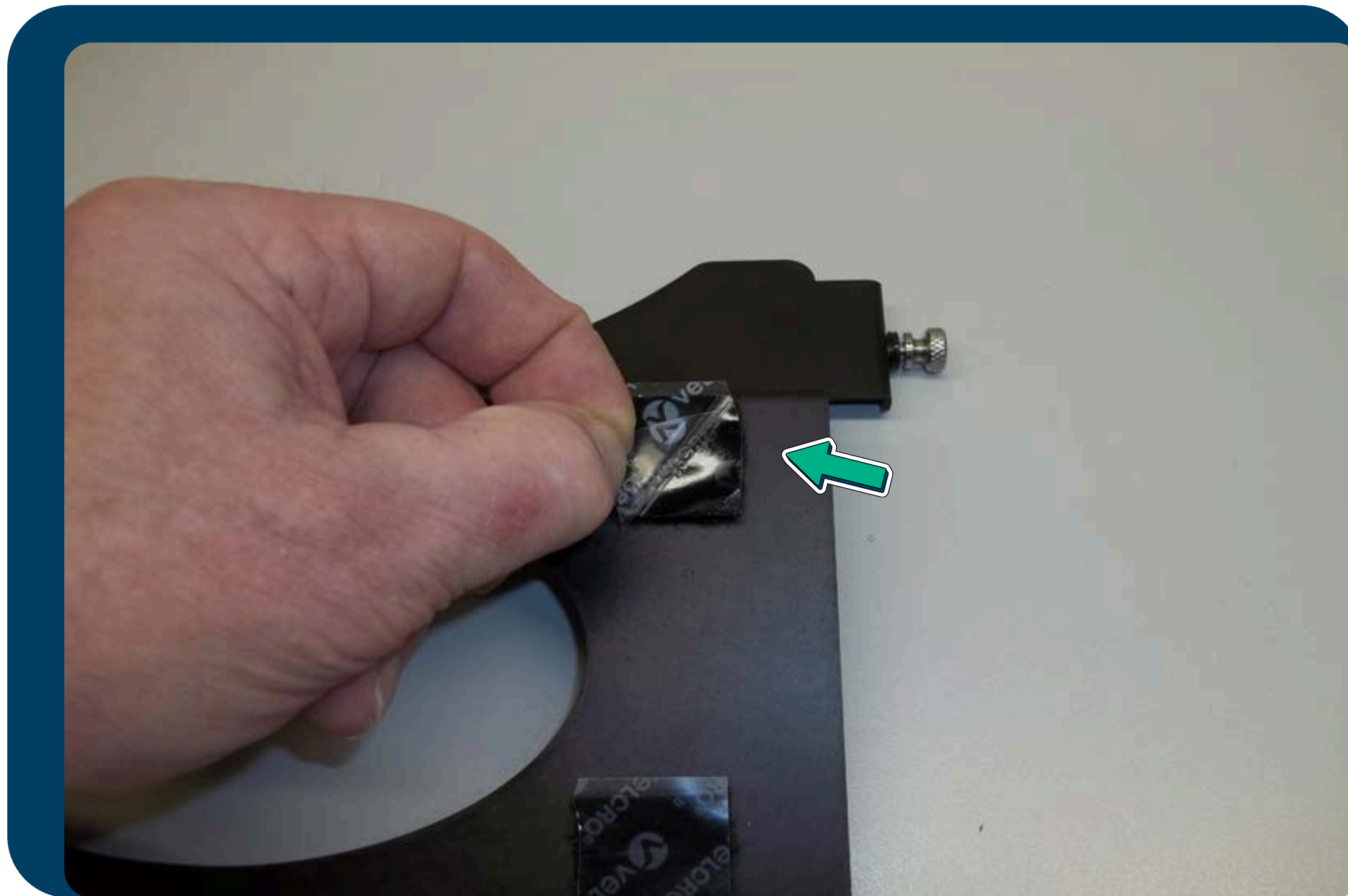
Keyboard Tray



Turn the **right hand** screw **counter-clockwise** until it stops. DO NOT FORCE.

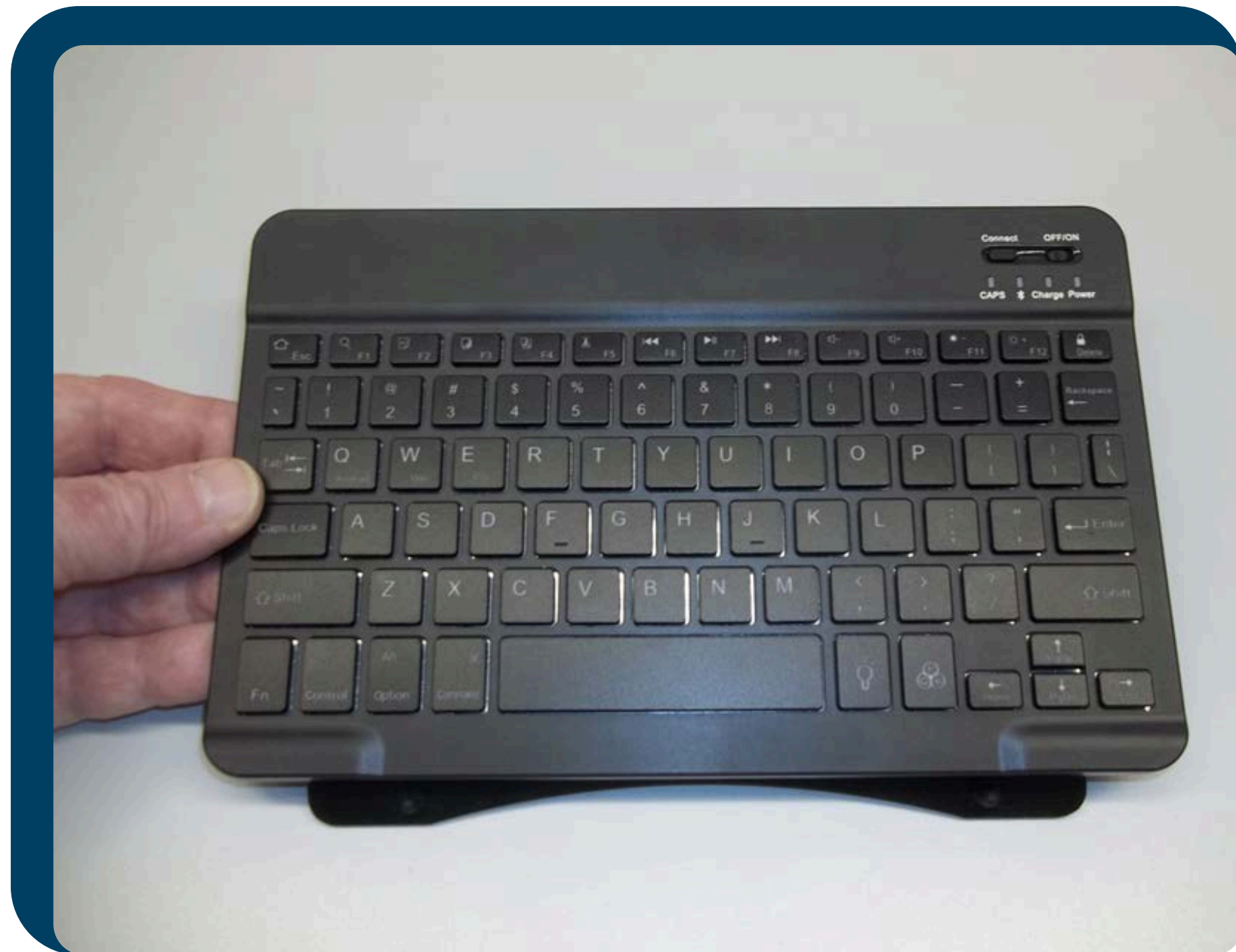


Turn the **left hand** screw **counter-clockwise** until it stops. DO NOT FORCE.



Peel away the liner from each of the 4 mounting pads. Take care to remove the “liner” only. Each pad has 2 parts a “hook” side and a “loop” side.



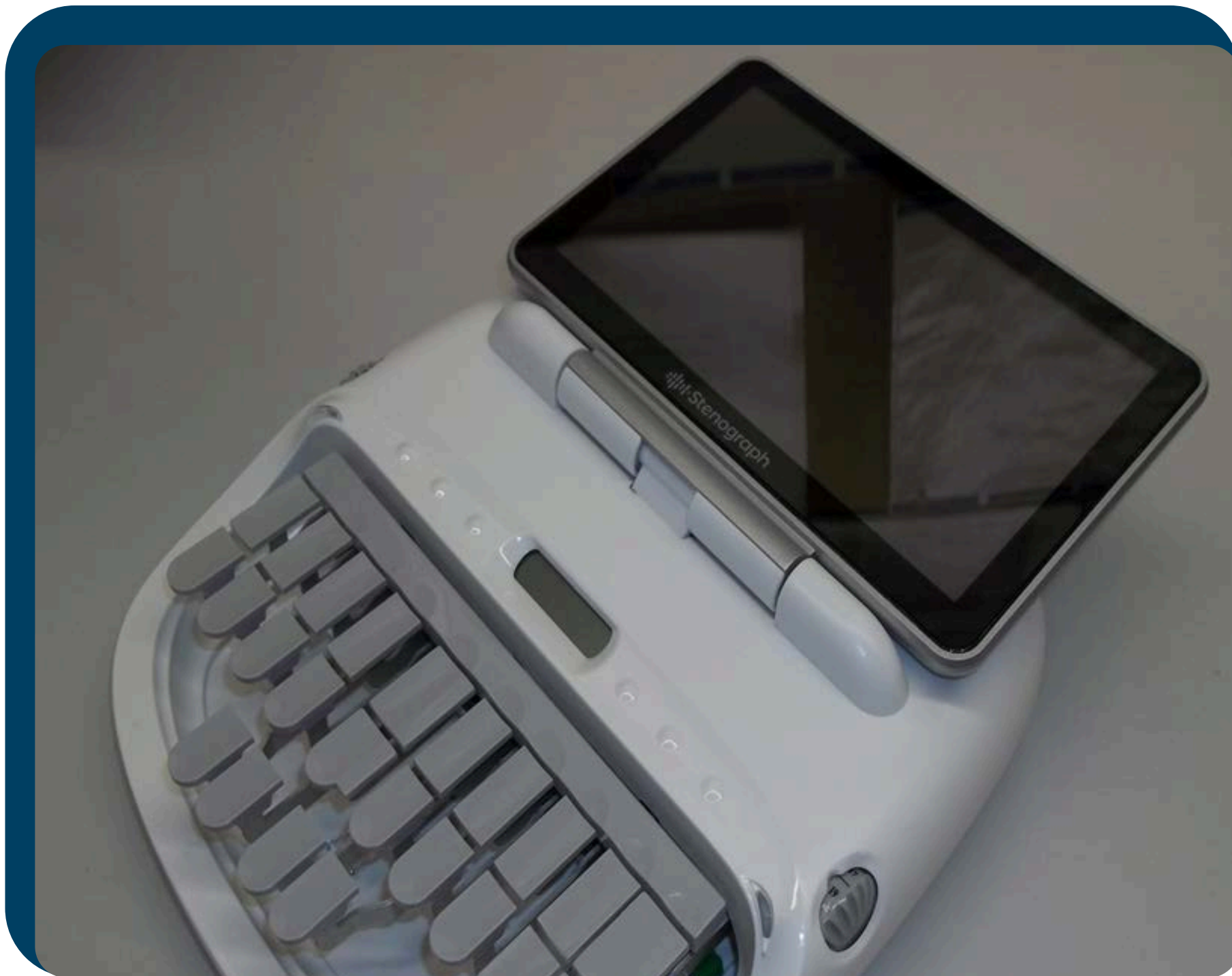


With the liners removed hold your keyboard ABOVE the tray in the position you want to have it located. Slowly lower the keyboard onto the adhesive pads.

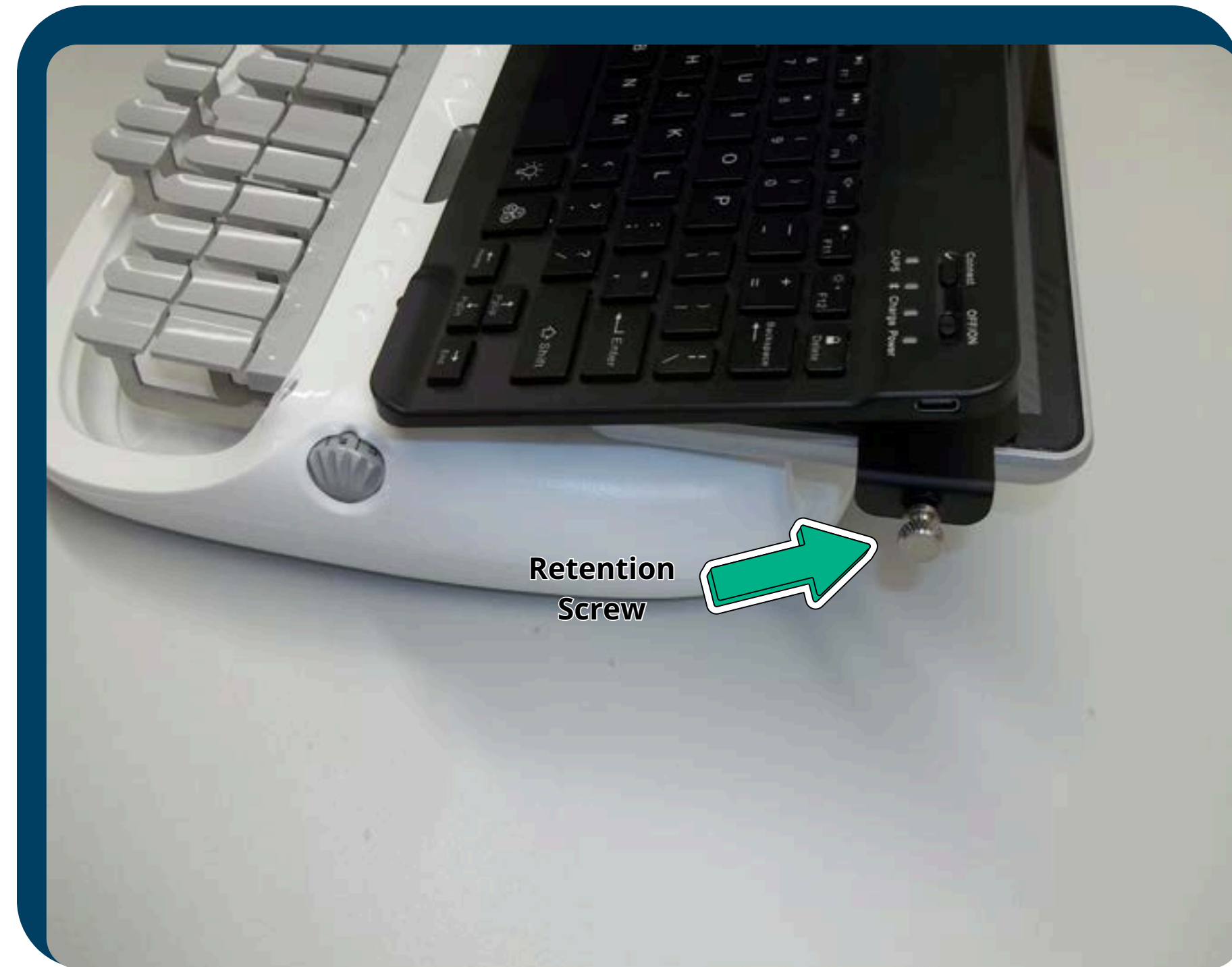


The VELCRO “loop” side of the pads will be transferred to the backside of the keyboard. This allows for attaching and removal of the keyboard from the tray.





With the liners removed hold your keyboard **above** the tray in the position you want to have it located. Slowly lower the keyboard onto the adhesive pads.

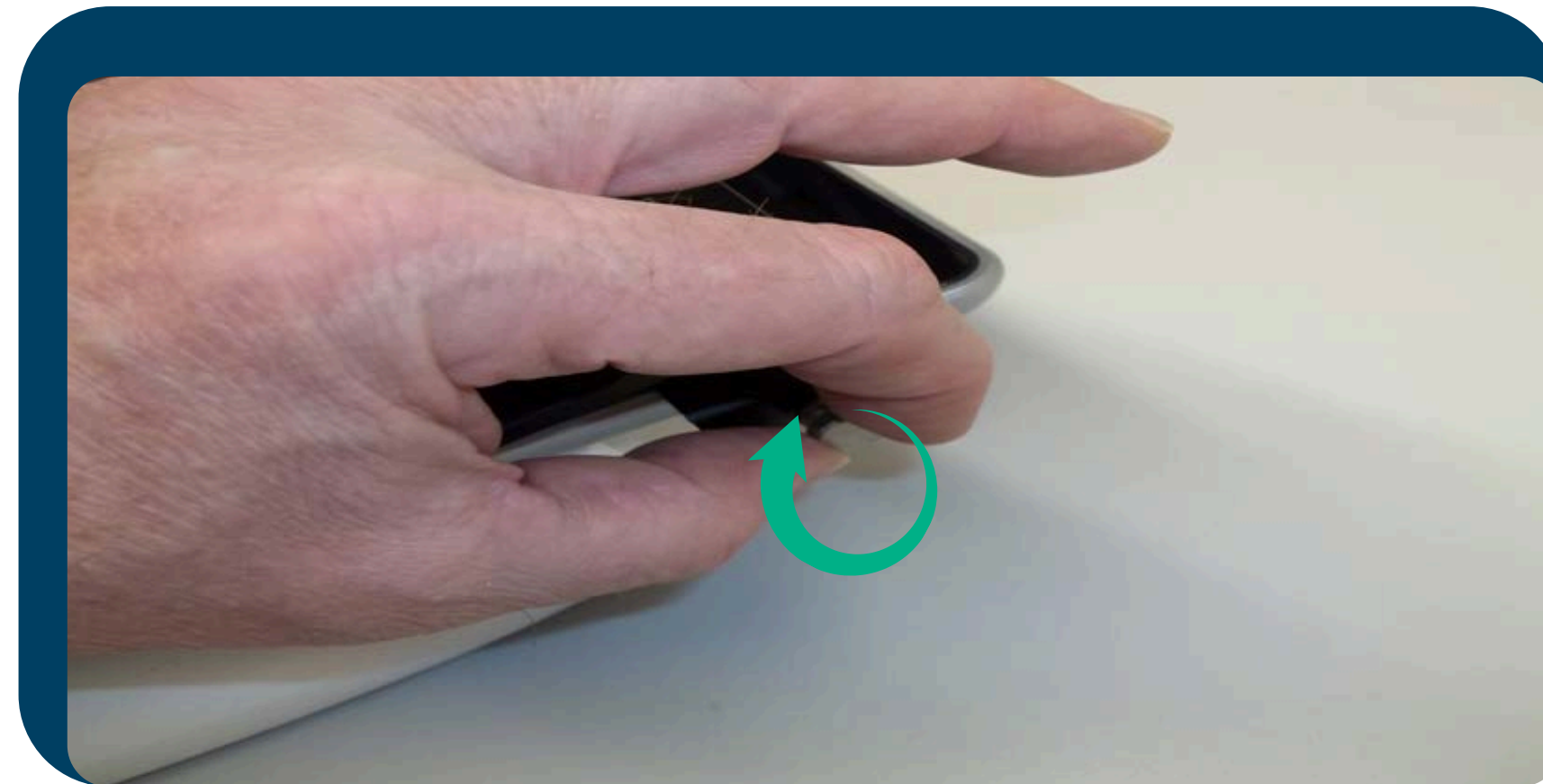


The VELCRO “loop” side of the pads will be transferred to the backside of the keyboard. This allows for attaching and removal of the keyboard from the tray.





With the tray mounted on the LCD frame as shown turn each retention screw **clock-wise**, equal amounts to keep the tray centered. Turn the screws until the tray is firmly held in place.



Right side retention screw.



Left side retention screw.

**Note: since screws are facing each other the LH turn will be opposing the RH turn.**



You have now successfully installed the keyboard tray