



Luminex® II

Start-Up Guide

STEP 1

Download our Writer Drivers, Utilities, and User Guide here: Stenograph.com/UtilityCD

STEP 2

Turn your writer on or off by pressing and holding the leftmost function button for 2 seconds.



STEP 3

Install the writer drivers from the link above.

STEP 4

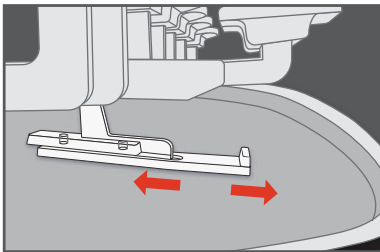
Load your personal dictionary onto the writer.

STEP 5

Write like the pro that you are!

Operating the Tension Toggle

Use the Tension Toggle to achieve the lightest touch possible and eliminate bounce back.



STEP 1

Reach under the keys where the Tension Toggle is located

STEP 2

PUSH the Tension Toggle in to engage.
PULL the Tension Toggle out to release.



Videos explaining these steps and additional useful writer training can be found at:

Stenograph.com/videos

Protect Your Investment

ENDURANCE

ANNUAL PROTECTION PLAN

Should your writer ever need service, Stenograph's expert technicians can address the issues immediately and get you back to work quickly.

Your writer is a highly specialized device with complex electronic and mechanical components. Trust your writer only to Stenograph technicians — exclusive providers of new and OEM materials.

EXTRA

WRITER SERVICE

With Extra, your writer will feel and sound like new again! Stenograph's expert technicians will thoroughly examine, readjust, and clean your writer for optimal performance.

Stenograph recommends having the Extra writer service performed every 24 months.



For security and performance improvements, check for updates to your writer software at:

Stenograph.com/Writer-Downloads



Stenograph®

Call Technical Support with questions at:
1-800-323-4247

Warranty information at:
Stenograph.com/terms-conditions