

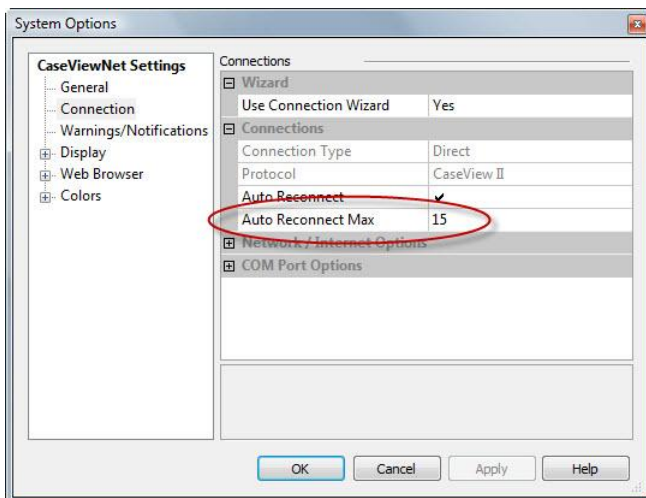
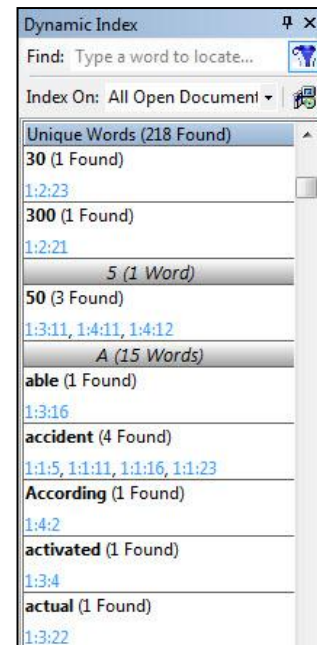


## What's new in CaseViewNet Client 2.6.0!

### Version 2.6.0

The **Connection Wizard** option is automatically set to **Yes** in all new installations of CaseViewNet 2.6.0. New users will find the realtime connection process a snap.

The **Dynamic Index** now defaults to automatically display on the right side of the CaseViewNet screen and defaults to indexing All Open Documents. If you haven't used this feature yet, it's a great tool to see all occurrences of unique words, the location of each occurrence and a small excerpt of the surrounding text by hovering over each location reference. It also allows you to immediately jump to each occurrence with a click of your mouse.



The default setting for the **Auto Reconnect Max** option has increased. When Auto Reconnect is active, CaseViewNet attempts to connect to the Case CATalyst server for the specified number of attempts. The default setting for the number of attempts is now 15.

**Enhancements** were made to improve the interface between Case CATalyst version 12.5 or higher and CaseViewNet version 2.6.0.