

Diamante[®] User Guide



Stenograph[®]

Release: April 2017, July 2012; March 2012; July 2011; March 2011; February 2011; November 2010; June 2010; March 2010; February 2010; October 2009; July, 2009.

Copyright 2017, Stenograph, L.L.C. All Rights Reserved.

Stenograph, L.L.C. Adjustable LCD Screen Assembly for Writing Machine. U.S. patent 7,403,375, filed May 27, 2005, and issued July 22, 2008.

This material is protected by copyright law, including the Copyright Act of 1976, and is not to be copied, reproduced, modified, sold, stored or transmitted in any form or by any means (electronic, mechanical, photocopy, recording or otherwise), or used in any other manner, without the prior written permission of Stenograph.

STENOGRAPH PROPRIETARY: This material constitutes proprietary and trade secret information of Stenograph, L.L.C., and shall not be disclosed to any third party, nor used by the recipient, except under the terms and conditions of the purchase agreement between the customer and Stenograph, L.L.C.

Changes may be made periodically to the information in this publication. Such changes will be incorporated in any new edition of this manual.

Stenograph, L.L.C. is a Pettibone Company.

Case CATalyst, CATalyst, EasyLock, Diamante, TrueStroke Technology (patent pending), élan Mira, Stentura Fusion, SmartWriter, Stentura, Stenograph logo and Stenograph are trademarks and registered trademarks of Stenograph, L.L.C.

Windows is a registered trademark of Microsoft Corporation in the United States and other countries.

Windows Vista is either a registered trademark or trademark of Microsoft Corporation in the United States and/or other countries.

SanDisk is a registered trademark of SanDisk Corporation.

The SD logo is a trademark of Toshiba Corporation.

All other trademarks are the property of their respective owners.

Congratulations on the purchase of your Diamante®!

We strongly encourage you to read this User Guide and practice using your writing machine according to the instructions contained therein. This will allow you to become comfortable and familiar with it before taking it on a job or into class.

The Diamante® is equipped with a non-glare liquid crystal display for easy read back of steno or text. The Diamante® provides text translation and searching, making it easier to provide “read back.”

Your Diamante comes with rechargeable batteries: one main battery pack and an internal backup battery. Advanced battery technology prevents the batteries from overcharging so you don't have to worry about leaving the batteries on the charger overnight or over a weekend. Be aware that batteries are consumable items and are usually ready to be replaced every twelve to eighteen months.

EasyLock™ Z12 tripod positioning with a positive-locking mechanism provides quick and easy setup. Simply open and set the tripod on the floor and place your machine on it according to the instructions in this guide. The design of the tripod assures a smooth, even writing platform for you to enjoy.

You'll probably notice how light the Diamante is - - just 4.5 pounds. The carrying case also lightens your load.

Remember to check the Stenograph® web site, www.stenograph.com, for updates to the Diamante. The Diamante was designed with you in mind. We know you'll enjoy using it!

STENOGRAPH, L.L.C.

The Importance of Working Comfortably and Effectively

Stenograph believes that the Diamante shorthand machine, when used in compliance with the enclosed instructions and information, is safe. Certain sources, though controverted, suggest a relationship between injuries of the hands and forearms with prolonged use of any type of keyboard or other equipment involving repetitive movements of the hands. At the same time, other sources indicate that there is no such cause and effect.

The safety and well-being of persons using Stenograph equipment is of paramount concern and because we recognize that these medical and scientific questions are not definitively resolved, Stenograph encourages all users of our writers to carefully review the following Work Area Checklist and to use appropriate work habits. Remember, personalizing your environment so that it is comfortable for you, promotes a healthy physical and mental work lifestyle.

The following Work Area Checklist is not intended to be all inclusive but a guideline for you to use. Only you can determine what is best for you. Use the checklist to assess and adjust your work area to suit your own needs. Personalizing your environment so that it is comfortable for you promotes a healthy physical and mental work lifestyle.

Work Area Checklist

At Your Diamante

- ✓ Use a comfortable chair conducive to correct posture.
- ✓ Adjust the height of the shorthand machine appropriately for your body.
- ✓ Position the shorthand machine comfortably close to you.
- ✓ Place the tripod between your knees. Do not sit “sidesaddle”.
- ✓ Minimize the use of the shorthand machine on surfaces other than the tripod stand.

At Your Computer

- ✓ Place the monitor screen perpendicular to the window to help avoid glare.
- ✓ Adjust or close window coverings.
- ✓ Arrange materials such as reference books or a telephone close to you to help avoid excessive reaching or twisting.
- ✓ Clear the area under and around the desk to leave room for your feet and legs.
- ✓ Remove sources of distraction around the monitor.
- ✓ Keep noise to a minimum.
- ✓ See accompanying materials provided by the computer keyboard manufacturer.

Your Body

- ✓ Take frequent breaks to stretch or exercise.
- ✓ Maintain a straight wrist position.
- ✓ Avoid resting your wrists while writing.
- ✓ Keep your hands level with your forearms.
- ✓ Let your fingers curve naturally.
- ✓ Let your forearm go up and down a little when you write, pivoting at the elbow, not at the wrists.
- ✓ Pull your steno machine comfortably close to you.
- ✓ Keep your feet on the floor or supported by a footrest.
- ✓ Support your lower back.
- ✓ Assure that your knees are bent at an angle of 90° or more and your thighs at an angle of 90° or greater in relation to your torso.
- ✓ Adjust the chair position and your posture throughout the day.
- ✓ If you experience any aching, numbing, or tingling in your arms, wrists, or hand, consult a qualified health care professional.

Contents

Chapter 1: Introduction.....	7
Diamante Features	8
Diamante Feature Details	9
User Guide Overview.....	10
Tutorial Clips.....	11
Chapter 2: Hardware	13
Batteries.....	14
Communication Ports	18
Function Buttons.....	23
Keyboard Depth and Tension Controls.....	24
Reset	25
Secure Digital Cards.....	26
Status LCD	29
Tilting Color Screen	30
Tripod.....	31
Chapter 3: Writing on the Diamante	33
Accessing Diamante Features.....	34
Writing Jobs	37
A/An Resolution	39
Audio.....	40
Auto-Conflict Resolution	43
Backup SD Card	44
Beeper Volume	46
Brief It	47
Copy Log	51
Data SD Card	52
Dictionaries.....	55
Display Set Strokes Per Minute (SPM).....	58
Electronic Marks	59
J-Defines.....	60
Job Statistics.....	68
Keyboard Layout.....	69
Keyboard Settings	70
Memory	74
New View	76
Options	77
Prompt to End a Job Option	78
Reopen	79
Scroll.....	80
Search	81
Serial Protocol	84
Status.....	85
Steno Test	86
Suffix Handling.....	87
Test Mode.....	88

Thumb Drive	89
Tilting Screen Appearance	90
Time and Date	92
Translate Options	93
TrueStroke	94
USB Communication	95
Wireless	96
Chapter 4: Troubleshooting	97
Troubleshooting Tips	97
Diamante Technical Support	101
Appendix A: Updating Diamante Software	103
Appendix B: Diamante Utilities	105
Personalize the Diamante Splash Screen	106
Convert Date/Time to Stentura Format.....	108
Convert RTF/CRE Dictionaries	110
Backup SD Card Reader	113
TrueView.....	115
Index	125

Introduction

Congratulations on the purchase of your Diamante® writing machine. Read this user guide to familiarize yourself with the Diamante components.

Chapter 1, *Introduction*, highlights the features of your Diamante, describes typographical conventions used in this guide and outlines the organization of this guide.

Package Contents

Your new Diamante comes with the following items:

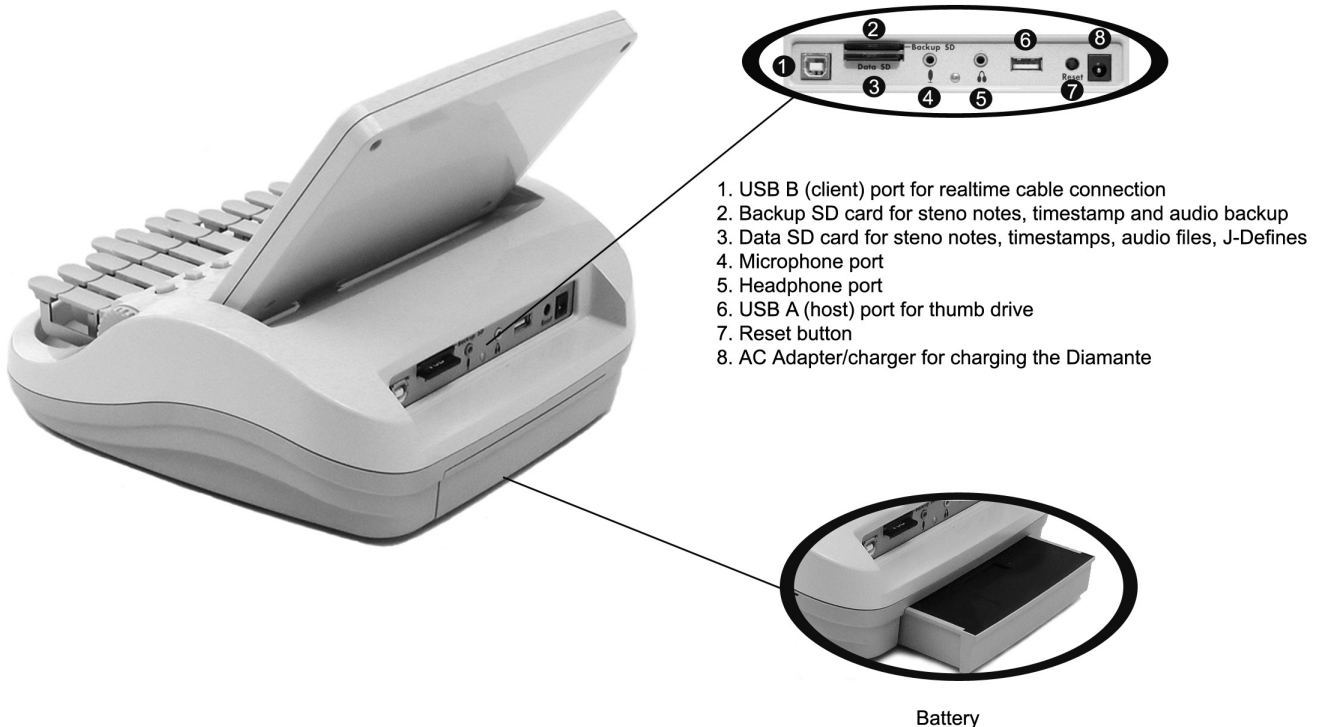
- Diamante®
- Carrying case
- EasyLock™ Z12 tripod
- 1 main removable, rechargeable battery pack
- 110/220 AC adapter/charger
- 1 Data SDHC card, (4 GB)
- 1 Backup SDHC card, (4 GB)
- USB SD Flash Drive reader
- USB cable (6 ft.)
- Diamante®/Wave™ Utilities and Tutorial CD
- Optical-quality spray cleaner and cleaning cloth
- Stenograph One-Year Commercial Warranty document
- Diamante User Guide available on the Diamante®/Wave™ Utilities and Tutorial CD

Diamante Features

Diamante Front View



Diamante Back View



Diamante Feature Details

The Diamante provides you with the following features:

- Translated text displays on a seven inch color, non-glare Tilting screen.
- View text, steno notes or text and steno notes simultaneously.
- Realtime ready through USB or virtual serial port.
- Backup SD card for steno notes, timestamps and audio.
- Record and playback audio.
- Adjustable digital clock with month, date, and time.
- Data SD card for steno notes, timestamps, job dictionary and audio.
- Adjust beeper volume.
- Set the Tilting screen brightness and text color and font size.
- Update Diamante software from Internet download via USB.
- Date and timestamp note files.
- Automatically load main and job dictionaries.
- J-Define entries from the Diamante to a job dictionary.
- A/An resolution, Auto-Conflict and suffix handling for readback.
- Search for and display the previous or last Question, Answer, untranslate, StenoMark, or steno string.
- Scroll forward and backward in a file.
- Keyboard and individual key sensitivity adjustments.
- Reopen an existing file for readback and play audio.
- Bluetooth ready capabilities (optional).
- WiFi capabilities (optional).

User Guide Overview

This Diamante User Guide contains the following chapters with related topics.

Chapter 1: Introduction

Introduction acquaints you to the Diamante features and explains this user guide.

Chapter 2: Hardware

Hardware explains the various components of the Diamante and how to use them.

Chapter 3: Writing on the Diamante

Writing on the Diamante explains all the software features of the Diamante used for setup before you begin writing and while writing a job. These includes features such as loading dictionaries, setting audio options, customizing the Tilting screen, searching steno and text and changing the Tilting screen view.

Chapter 4: Troubleshooting

Troubleshooting suggests possible solutions to some common situations that you may encounter when using the Diamante.

Appendix A: Updating Diamante Software

Updating Diamante Software instructs you how to download available updates for your Diamante from the Stenograph web site.

Appendix B: Diamante Utilities

Diamante Utilities provides instruction on how to load an RTF/CRE dictionary on the Diamante, convert Diamante files from Date and Time format to Stentura compatible format, personalize the Diamante splash screen, retrieve jobs from a Backup SD card and view TrueStroke™ data.

Tutorial Clips

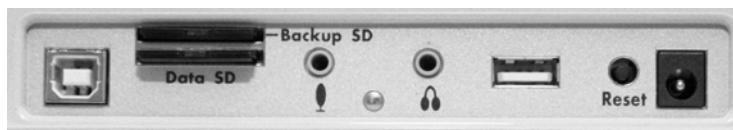
The Diamante®/Wave™ Utilities and Tutorial CD contains short videos with audio, designed to assist you in learning about select Diamante features such as inserting the battery, using SD cards and recording audio. This Diamante User Guide provides additional details and step-by-step instructions for all Diamante features.

To access the Diamante video lessons:

1. Turn your computer **On**. Ensure that it is fully booted.
2. Ensure your computer speakers are turned **On**.
3. Insert the Diamante®/Wave™ Utilities and Tutorial CD into the CD-ROM/DVD drive on your computer. If the AutoPlay dialog box displays, click **Run autorun.exe**.
4. The Diamante - Wave Utility dialog box displays. Click **Diamante Utilities, User Guide and more**.
5. The Diamante Utility dialog box displays. Click **Video Tutorial Clips**.
6. Click the lesson you want to view. The video begins playing automatically in your browser. Use the **Pause/Play** button on the viewer as necessary.
7. When the current video finishes, select another video to view or click **Replay**.
8. When finished with the Diamante®/Wave™ Utilities and Tutorial CD remove it from your computer.

Hardware

Chapter 2, *Hardware*, provides information about the hardware components of your Diamante. This includes details on battery charging and use; communication ports and setup; function buttons for accessing menus; Status LCD icons; adjusting the Tilting screen; resetting the writing machine; and assembling and attaching the tripod.



Diamante Ports

Batteries

The Diamante comes with one main rechargeable battery, an internal backup rechargeable battery and an AC adapter/charger. You can operate your writing machine on battery power, using the AC adapter/charger without the main battery or using the AC adapter/charger with the main battery charging. Although you can use the Diamante with the AC adapter/charger, Stenograph recommends that you fully charge the battery before first time use. See [Battery Charging Procedure](#) on page 14.

The main battery, fully charged, operates all the features on the Diamante for approximately 8 - 10 hours. Charging time for the main battery is approximately 4 - 5 hours.

The internal backup battery provides a FailSafe mode if the charged level of the main battery becomes too low and you are not using the AC adapter/charger. In FailSafe mode, the Tilting screen, Bluetooth communication and WiFi communication turn Off. Your steno notes and audio continue to be written to the Data and Backup SD cards and, if you are writing realtime via a USB connection, steno notes are sent to the realtime screen. Steno notes also continue to be stored in memory. The backup battery operates for approximately 8 hours and charges at the same time the main battery is charging.

A third, small internal battery functions to retain the Diamante date, time and user settings. This battery has a lifespan of approximately 10 years.

Charging the Batteries

When the Diamante is powered by the AC adapter/charger, both the main battery and backup battery levels are automatically maintained. The batteries fully charge in 4 -5 hours. You can use your writing machine while the AC adapter/charger charges the batteries. If you have an additional main battery pack, Stenograph recommends alternating the batteries monthly.

The Diamante batteries only charge when low. Once the batteries are charged, it is not necessary to keep the writing machine plugged into the AC adapter/charger, however, keeping the writing machine plugged in does not damage the batteries. If you are not going to use your Diamante for an extended period of time, Stenograph recommends keeping the Diamante plugged into the AC adapter/charger. If the Diamante is not in use for a long period of time while disconnected from the AC adapter/charger, it is important to fully charge the battery before use.

Use only the AC adapter/charger supplied with your Diamante. Chargers designed for other Stenograph writing machines do not power the Diamante. The Stentura® charger fits the Diamante but does not charge the Diamante battery.

Battery Charging Procedure

To charge your Diamante batteries:

1. Ensure the main battery is in the Diamante.
2. Plug the AC charger/adapter into a wall outlet.
3. Insert the small plug on the AC adapter/charger cord into the AC adapter/charger socket on the back of the Diamante.



- The Diamante turns On. A black dot in the lower right corner of the Status LCD indicates the Diamante is On. A row of running blocks indicates the batteries are charging. If you plug your Diamante in to charge and only the black dot displays, the batteries are charged. Charging is not necessary and no charging occurs.

You can use the Diamante while the batteries charge. The running blocks do not display while writing but the Diamante continues to charge. See [Status LCD](#) on page 29 for more information.

Press the **On/Off** button to turn the Diamante Off during charging. The Tilting screen turns off but the Diamante remains On while charging as indicated by the black dot on the Status LCD.

Viewing Battery Charging Status

The Tilting screen and the Status LCD display graphic indicators that reflect the charging status of both the main and backup battery. See [View Battery Voltage Levels](#) on page 15 to view specific battery voltage levels, current charging status and the most recent charging history.

When the AC adapter/charger is connected to the Diamante charging the batteries, the title bar on the Tilting screen displays a battery icon with the battery gauge showing running black and yellow stripes. When the batteries are fully charged, a plug icon replaces the battery icon until you disconnect the AC adapter/charger.



Battery Charging



Battery Fully Charged

When the main battery is charging, the Status LCD displays black bars in running sequence from left to right. The black bars are not visible when you are writing, but redisplay when you close the job. When the Diamante is finished charging, the bars move from each side of the screen to the middle of the screen in a “clapping” motion. If the AC adapter/charger is plugged in for a long time, the “clapping” motion stops, however the battery is fully charged.

When the backup battery is charging along with the main battery, the battery icon displays on the Status LCD along with black bars in running sequence from left to right. When the backup battery is fully charged, the battery icon no longer displays.

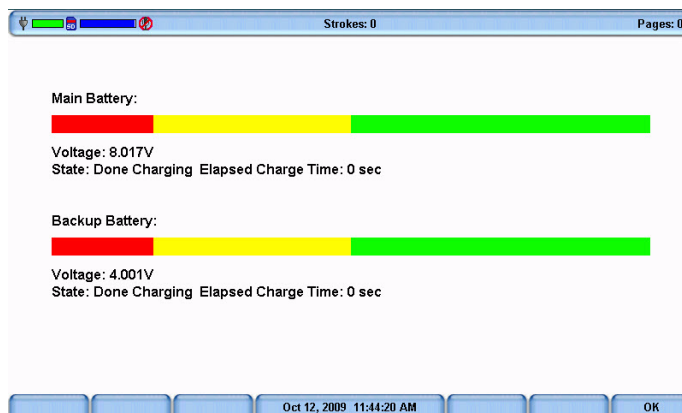
View Battery Voltage Levels

The Battery diagnostic screen displays the voltage level, charging status and most recent charging history for the Diamante batteries. This includes both the main battery and the backup Lithium ion battery.

To view battery voltage and charging status:

- Make sure the charger/adapter is not plugged into the Diamante. If you just disconnected the charger/adapter from the Diamante, turn the Diamante **On** and wait 10 – 15 minutes to get an accurate battery voltage reading.
- From the Opening menu, press **More**.

- Press **Diag** and then press **Battery**. The battery status screen displays.



Diamante Battery Status Screen

- Review the following battery information:
 - Indicator bar* - provides an approximate indication of the battery voltage level. Green indicates the battery is fully charged; yellow indicates it is charged and red indicates it is low.
 - Voltage* - the actual voltage amount. A main battery reading of 7.4 volts or higher indicates normal operating voltage. 7.0 volts or below indicates the battery is very low and indicates approximately one hour of operating time remaining.
 - A backup, Lithium Ion, battery reading of 3.9 or above indicates the backup battery is charged and does not charge when the adapter/charger is attached; 3.8 or below indicates the backup battery needs charging and automatically charges when the charger/adapter is attached.
 - State* - the most recent charging history. When checking battery status with the adapter/charger not attached, the message *Not Charging* displays. If the adapter/charger was removed before the charging is complete, an *INCOMPLETE* message displays along with a *Cause of Failure* message indicating the charger was removed.
- When finished, press **OK**, **Quit**.
- To display the Opening menu, press **More**.

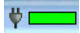
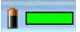



Low Battery Warnings

As the main battery becomes progressively low, the Diamante displays warnings using the battery gauge on the title bar of the Tilting screen and messages on the Status LCD. When the main battery becomes low while the Diamante is connected to a computer with a USB cable during realtime, low battery messages continue to display until the battery is depleted. All the features remain operational. See [Install the Diamante USB Drivers](#) on page 18.

Use the Diamante Diagnostic feature to check the specific voltage levels of the batteries. See [View Battery Voltage Levels](#) on page 15.

Battery Gauge

The battery gauge on the title bar of the Tilting screen provides a general indicator of the main battery voltage level. It changes appearance as the voltage level of the battery changes:

-  - an electrical plug with a full green gauge indicates the Diamante is plugged into the AC adapter/charger and the main battery is fully charged.
-  - a battery with a full green gauge indicates the main battery is fully charged. As the charge of the battery level drops, the green bar becomes smaller.
-  - a battery with a partial yellow gauge indicates the battery is low.
-  - a battery with a short red gauge indicates the battery is almost completely drained. The battery icon flashes on and off.
-  - a battery with black and yellow running stripes indicates the Diamante is plugged into the AC adapter/charger and the batteries are charging.

Tilting Screen Battery Messages

The Tilting screen displays four progressive warning messages as the main battery level becomes low:

- Main battery, Danger -- Battery Low.
- Main Battery, Danger -- Recharge Battery Now.
- Main Battery, Battery Dead -- Switching To FailSafe...
- Main Battery, Battery Dead -- Recharge Battery Now!

Changing the Battery

To remove and replace the Diamante main battery:

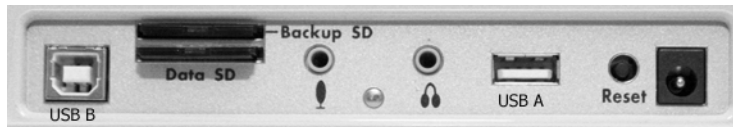
1. Place the palm of your hand squarely against the back of the Diamante on the battery. Grasp the back portion of the battery with your two middle fingers.
2. Pull the battery gently away from the Diamante.



3. To replace the battery, slide it into the slot and press the battery firmly until it locks into place.

Communication Ports

There are two types of USB ports on your Diamante. The standard USB A (host) port allows you to insert a thumb drive to copy files from the memory or from the Data SD card. The small USB-B (client) port provides connection access for the USB realtime cable between the writing machine and the computer. To use the USB cable connection, it is necessary to install the Diamante USB drivers.



Install the Diamante USB Drivers

The Diamante USB driver must be installed on your computer in order to write realtime with a USB cable, load dictionaries and install updates. The USB driver installation also installs the USB driver that creates a virtual serial port. If your CAT vendor does not support a USB realtime connection, this driver allows for serial communication between the Diamante and CAT software. See [USB Virtual Serial Port Communication](#) on page 21 for details.

You can use the USB Realtime and Read communications with USB compatible CAT software such as Case CATalyst version 4.096 or higher.

The Diamante USB drivers are located on the Diamante®/Wave™ Utilities and Tutorial CD, which comes with your Diamante. They are also available for download from the Stenograph website at www.stenograph.com. Download instructions are included on the website.

Complete the following steps to install the USB drivers from the CD:

1. Turn your computer **On**. Ensure that it is fully booted.
2. Insert the Diamante®/Wave™ Utilities and Tutorial CD into the CD-ROM/DVD drive on your computer. If the AutoPlay dialog box displays, click **Run autorun.exe**.
3. The Diamante - Wave Utility dialog box displays. Click **Install USB Drivers**. If the User Account Control message box may displays, click **Continue**.
4. The "Installing" screen displays during driver installation.
5. When the completion screen displays, click **Finish**.

Powering With the USB Cable

When the Diamante is connected to your computer for realtime via a USB cable, the main battery continues to power the writing machine. In most situations, the USB port can power the Diamante when the main battery is not charged or you want to run on USB power without the battery. It is not necessary to remove an uncharged battery to run on USB power.

When the main battery becomes low while using a USB connection, low battery messages display on the Diamante, but all features continue to operate. The USB port provides power to run all the Diamante components except WiFi and Bluetooth communications. When powered by the USB port, the Diamante Tilting screen displays at about half of the Backlight brightness setting.

To use the USB cable, you must install the Diamante USB driver on your computer. See [Install the Diamante USB Drivers](#) on page 18 for instructions on loading the driver.

Updating With the USB Cable

Software updates for your Diamante, when available, can be easily downloaded from the Stenograph web site. Once downloaded onto your computer, you can load the software update onto your Diamante over a USB cable. See [Updating Diamante Software](#) on page 103 for more information about updating the Diamante.

Connect for Realtime Writing

To connect your Diamante to your computer for realtime writing, you must have **one** of the following:

- a USB cable connection which requires using a USB compatible CAT software, such as Case CATalyst V4.096 or higher. A USB cable is included with your Diamante. Check with your CAT software vendor for compatibility information.
- a virtual serial port connection via USB cable. The virtual serial port connection is compatible with any CAT software that accepts a serial connection and Stentura protocol. See [USB Virtual Serial Port Communication](#) on page 21.
- a wireless kit. Stenograph provides technical support for Diamante wireless communication when the Diamante Wireless Communication kit is used. Technical support for other wireless adapters are not supported.

USB Cable Communications

You must be using USB compatible CAT software and have installed the Diamante USB driver on your computer. See [Install the Diamante USB Drivers](#) on page 18 for instructions on loading the driver.

1. Ensure your Diamante and computer are turned **On** and are fully booted.
2. Each end of the USB cable has a different connection plug. Insert the appropriate end of the USB cable into the USB B (client) port on the back of the Diamante and the other end into a USB port on the computer.

Windows® XP

Insert the USB cable into the computer USB port on which you loaded the Diamante USB driver.



3. Start your CAT software.
4. Set your realtime options. In Case CATalyst V10 and higher, select **Diamante - USB** on the Translate Realtime tab. In Case CATalyst V4.096 - V9, select **élan - USB**.

 This is a USB connection. COM port settings do not apply.

5. Write a few strokes on the Diamante before starting realtime. If you loaded a dictionary onto your Diamante, the translated steno displays on the Tilting screen.

If the USB realtime connection is active when you take a break, the realtime screen may not display new steno strokes when you resume writing. This may happen when the USB port becomes inactive after remaining idle for a period of time. If this occurs, disconnect the USB cable from the back of the Diamante and reconnect it. The realtime file is not affected. Reconnect the cable to display the new steno strokes on the realtime screen. See [Troubleshooting](#) on page 97 for details on disabling USB port power saving features to avoid an inactive connection.

6. When you are finished writing realtime using a USB cable, it is important that you complete the following steps in order. This ensures your computer shuts down properly.
 - a. Press **End** on the Diamante to close the file.
 - b. Close and save the realtime file.
 - c. Unplug the Diamante USB cable from your computer and the Diamante.

USB Virtual Serial Port Communication

You must have installed the Diamante virtual serial port driver on your computer. The virtual serial port driver installs when you install the USB driver. The virtual serial port uses Stentura protocol for realtime communications and reading notes. See [Install the Diamante USB Drivers](#) on page 18 for instructions on loading the driver.

If you leave the USB realtime connection active when you take a break, the realtime screen may not display the new steno strokes when you resume writing. This is a function of the computer USB port becoming inactive when it remains idle for a period of time. To avoid an inactive connection when using the virtual serial port communications via a USB cable, it is important to check the power management settings to ensure the USB port does not turn off when idle. See [Troubleshooting](#) on page 97.

Virtual serial port communications via USB cable does not allow you to disconnect and reconnect the USB cable and maintain the realtime connection. For example, you disconnect from the virtual serial port connection to report a bench conference and then reconnect when finished.

To establish USB virtual serial port communication:

1. Ensure your Diamante and computer are turned **On** and are fully booted.
2. Each end of the USB cable has a different connection plug. Insert the appropriate end of the USB cable into the USB B (client) port on the back of the Diamante and the other end into a USB port on the computer.

Windows XP

Insert the USB cable into the computer USB port on which you loaded the Diamante USB driver.



3. Start your CAT software.
4. Set your realtime options. This is a virtual serial port communication via the USB cable. Ensure the appropriate COM port is selected. Depending on your CAT software, it may be necessary to select *Stentura* as the realtime writing machine.
5. Write a few strokes on the Diamante before starting realtime. If you loaded a dictionary onto your Diamante, the translated steno displays on the Tilting screen.
6. When you are finished writing realtime using the virtual serial port connection, it is important that you complete the following steps in order. This ensures your computer shuts down properly.
 - a. Press **End** on the Diamante to close the file. If the option, *Prompt to confirm ending job* is active, press **End** again at the prompt.
 - b. Close and save the realtime file.
 - c. Unplug the Diamante USB cable from your computer and the Diamante.

Wireless Communication

Stenograph provides two optional wireless communication choices for realtime writing. Wireless communication is available using either a WiFi or Bluetooth wireless connection.

WiFi Wireless Communication

The Stenograph optional Diamante WiFi hardware component and router kit allows realtime communication between Case CATalyst and the Diamante when using Diamante version 1.12 or higher, and Case CATalyst version 8.05 or higher. The ability to export Case CATalyst dictionaries to the Diamante and the option to send TrueStroke Data via WiFi are available features when using Diamante version 1.13 or higher and Case CATalyst version 12.50 or higher. All Diamante WiFi wireless features require that Case CATalyst is loaded on a computer with Windows® 7/Windows Vista®/Windows XP. Your computer must be wireless enabled or have a network interface card (NIC). See the *Diamante WiFi Wireless Communications Guide* included on the Diamante®/Wave™ Utilities and Tutorial CD for information about Diamante WiFi wireless setup, configuration and use. You can also download the guide from the Utilities and Links download page at www.stenograph.com.

Stenograph provides WiFi wireless support only when you are using the Diamante WiFi router kit. Other WiFi routers may work but are not supported by Stenograph.

Bluetooth Wireless Communication

Bluetooth wireless communication is available for the Diamante. The Stenograph optional Diamante Bluetooth wireless realtime kit allows wireless communication between the Diamante and Case CATalyst or a Windows based 32-bit or 64-bit CAT system on your Windows® 7/Windows Vista®/Windows XP notebook computer. The kit includes the necessary Diamante Bluetooth adapter and the Bluetooth software, drivers and adapter for your computer. See the *Diamante Bluetooth Wireless Communication* guide included in the kit for information on Bluetooth wireless communication set up, configuration and use.

Stenograph provides Diamante wireless support when the Diamante Bluetooth Wireless Communication kit is used. Other wireless adapters and software may work but are not supported by Stenograph.

Function Buttons

On either side of the Status LCD are three soft gray function buttons. The far left button turns the Diamante On.



Each button serves a specific purpose, or function, on the different menus. The menu bar is located at the bottom of the Tilting screen. Press the associated button, just below a function on the menu bar, to perform the action. For example, on the Opening menu, the word **Off** displays above the left most button. Pressing Off turns the Diamante Off. Again, on the Opening Menu, press the **Dict** button to select a job dictionary. When you press **Dict**, another menu displays, listing more menu choices related to using dictionaries. From this menu, press **Select** to display a list of job dictionaries from which you can choose.

Keyboard Depth and Tension Controls

There are two thumbwheels on the Diamante, one on each side of the keyboard, that control the keyboard depth and keyboard tension.



The depth of stroke adjustment wheel, on the left, determines the height of the number bar and all the steno keys. This affects how far the keys go down when you press them.

The keyboard tension adjustment wheel, on the right, controls how soft or firm the keys feel. The extensive range, between the top and bottom stopping positions on the wheel, allows you to customize the tension to your particular writing touch. Do not force the wheel past either stopping position.

Adjust Depth of Stroke

To adjust the depth of stroke:

1. Face the front of the Diamante.
2. Do one of the following:
 - To shorten the stroke depth, roll the left thumbwheel toward the front of the Diamante.
 - To lengthen the stroke depth, roll the left thumbwheel toward the back of the Diamante.

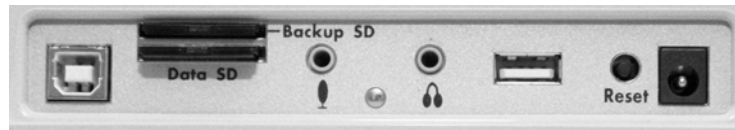
Adjust Keyboard Tension

To adjust the keyboard tension:

1. Face the front of the Diamante.
2. Do one of the following:
 - To decrease keyboard tension for a softer touch, roll the right thumbwheel toward the front of the Diamante.
 - To increase keyboard tension for a firmer touch, roll the right thumbwheel toward the back of the Diamante.

Reset

The Reset button is a small, recessed button located on the back of the Diamante to the left of the AC Adapter/Charger port.

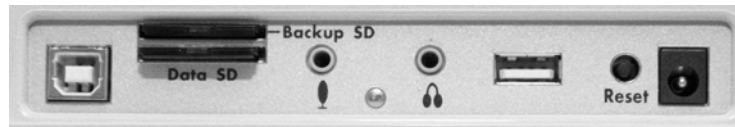


Like other computer equipment, the Diamante can seem unresponsive when it receives a series of commands it does not recognize. **If the Diamante appears unresponsive, press the Reset button on the back of the Diamante.** When you press the Reset button, the Diamante reboots and is then ready to use.

If you had a file open before pressing Reset, the Diamante ends the job and the file closes. A message displays about the recovered file. Press **OK** to continue. Start writing to append to the previous job.

Secure Digital Cards

A Secure Digital (SD) card is a memory card that can hold large amounts of data. The Diamante uses two SD cards, a Data SD card and a Backup SD card. The Data and Backup SD cards are located on the back of the Diamante. The Backup SD card is recessed and must be in the Backup SD card slot in order to use the Diamante.



The Diamante requires a minimum 1GB Data SD card, supporting SD cards from 1 to 2 GB and Secure Data High Density (SDHC) cards from 4 to 32 GB. The Data SD card stores steno notes, timestamps, job dictionaries and audio files.

The Diamante requires a minimum 1 GB Backup SD card, supporting SD cards from 1 to 2 GB and SDHC cards from 4 to 32 GB. The Backup SD card must be formatted in the Diamante. When you insert an SD card into the Backup SD slot on the Diamante, you are prompted to format the card if it has not previously been formatted in the writing machine.

The Backup SD card serves as a backup storage for steno notes, timestamps and audio files. It is necessary to insert a Backup SD card into the Diamante in order to operate the writing machine. If the Backup SD card in the Diamante Backup SD card slot is write protected, a message displays. Writing is not possible until you unlock the card. **The Backup SD card is designed as a backup and is not intended for archiving steno notes.**

Stenograph recommends you carry at least one additional SD card in the event the Data SD card becomes full or in a rare instance that an SD card in the Diamante becomes unusable. The Diamante is inoperable without a Backup SD card. See [Writing on the Diamante](#) on page 33 for more information about using Data SD and Backup SD cards.

SD Card Care

Stenograph recommends SimpleTech®, Kingston® or SanDisk® SD cards, although any high quality SD card is acceptable. SD cards are fast and durable yet still require basic handling care:

- Avoid excessive heat, cold, and moisture. Although the SD card is vulnerable to static, airport security should not damage a card.
- Always insert your card properly. SD cards are “keyed” so that they can only be inserted in one direction. If you cannot easily insert the card into the slot, reposition the card and try again.
- Do not attempt to remove a card while it is in use. SD cards are fast but still require a second or two to complete operations. **Using or removing a card while the Diamante is on may corrupt the data on the card. Stenograph strongly recommends turning off the Diamante before removing either a Data SD or Backup SD card.**

Enable Writing on a SD Card

SD cards have a write protect slide on the side of the card. If the write protect slide is moved to the protected position, no data is written on the SD card. If you insert a write protected SD card, a message displays on the Diamante indicating the SD card is write protected.



To allow data to be written to the SD card:

1. Hold the SD card with the notched side up.
2. Move the write protect slide to the **Up** position.

Remove and Insert a SD Card

SD cards are “keyed” so that they can only be inserted in one direction. When inserted properly, the SD card easily moves in and out of the slot. Attempting to force a SD card into the slot on your Diamante or USB SD Flash Drive reader could damage the card.

Remove a Data or Backup SD card

1. Use your index finger to gently push the SD card and then release your finger. You should feel the SD card release from the slot.
2. Remove the card from the slot. You should be able to easily remove the card from the slot. If you cannot easily remove the card, it is not released. Repeat Step 1.

Insert a Data or Backup SD card

1. Hold the card with the notched edge facing the Diamante and the metal strip facing down. Position the card in front of the SD slot without any angling.
2. Gently push the card into the SD slot on the Diamante or a USB SD Flash Drive reader on your computer. You may hear a soft click as you insert the card, indicating correct placement. If the card does not easily insert into the slot, do not force it. Remove the card and reinsert it.

If the Backup SD card in the Diamante Backup SD card slot is write protected, a message displays. Writing is not possible until you unlock the card.

USB SD Flash Drive Reader

A USB SD Flash Drive reader comes with your Diamante. The USB SD Flash Drive reader plugs into a USB port on your computer and holds the Data SD and Backup SD cards. This allows you to read steno notes, job dictionaries and audio files.

If you have an SD slot built into your computer, insert the Data SD card directly into the slot. You may not need the USB SD Flash Drive reader for all read functions.

It is necessary to read the Backup SD card using the USB SD Flash Drive reader that came with your Diamante or another reliable USB based external SD card reader. A built-in SD card slot reader on your computer cannot read the Backup SD card.



Sample USB SD Flash Drive Reader

Status LCD

Located between the gray function buttons is a small rectangular LCD screen. The Status LCD displays icons that indicate specific operations of the Diamante. When battery power is low enough to turn off the Tilting screen, the Status LCD continues to show information, indicating the writing machine is still working.

The Status LCD provides the following information:

- A black dot (●) displays in the lower right corner of the screen indicating the Diamante is On.
- The file open (📄) icon displays when you begin writing on the Diamante, indicating a file is open.
- The wireless communication icon (📶) displays when the Diamante is connected to a CAT system using wireless connection. The icon only displays when there is an active realtime connection. When you end realtime, the icon does not display.
- The realtime indicator (🔌) displays when the Diamante is connected to a CAT system with a USB connection or virtual serial port connection using a USB cable for writing. The icon only displays when there is an active realtime connection. When you end realtime or disconnect the cable, the icon does not display.
- The battery (🔋) icon displays when the backup battery is charging. The backup battery is automatically maintained when charging the main battery. This icon does not display if the backup battery does not need to be charged.

A row of rectangular black blocks (■■■) display in running sequence from left to right when the main battery is charging. When the Diamante is finished charging, the bars move from each side to the middle of the screen in a “clapping” motion. If you leave the AC adapter/charger plugged in for a long time, the “clapping” motion stops, however the battery is fully charged.

- A single black rectangular block (■) displays when you press a key. There is a corresponding block for each letter on the keyboard. Which block displays depends on the key stroked. A block displays for each key in the following order:

S T K P W H R A O * E U F R P B L G T S D Z

Stroking the number bar along with a key displays the # sign on the left-most side of the Status LCD and the single black rectangular block for the key pressed.

Tilting Color Screen

The Diamante tilting color screen is a high resolution, WVGA display. The “non-glare finish” reduces glare from overhead lights. The display folds flat for storage or transport and opens with a tilt range to accommodate your personal viewing preference.

To use the Tilting screen, gently pull up on the display and adjust the tilt as necessary. Gently pull down on the display to fold it flat. When the Diamante is On and the display is folded flat, the display remains On.

You can adjust the brightness, text color and font size on the Tilting screen. Adjusting the brightness can reduce battery usage. See [Writing on the Diamante](#) on page 33 for more information about brightness, text color and font size settings.

Depending on the selected function, the Tilting screen shows:

- the title bar with a battery icon, battery gauge reflecting the approximate main battery level, audio recording status when audio is active, the number of steno strokes for the open file and the estimated number of pages for the open file.
- the transcript text, steno, or file number messages.
- menu bar from which you select options or perform an action.
- warning messages, such as “Low Battery.”

Cleaning the Tilting Screen

1. Turn the Diamante **Off**. It is easier to see the areas that are dirty when the screen is dark.
2. **Very gently** wipe the screen using the cleaning cloth that came with your Diamante or a microfiber cloth available in computer, camera and eyeglass stores.

Do not use materials such as paper towels, tissue paper or your shirt sleeve. These non-ultrasoft materials can easily scratch the screen.

Do not press hard on the screen. Pushing directly on the Tilting screen can cause pixels to burn out.

3. If the cloth does not completely remove the dirty areas, dampen the cloth with the optical-quality spray cleaner that came with your Diamante or a cleaner designed for flat screen monitors or eyeglasses, and **very gently** wipe the screen.

Do not spray the display screen directly. Liquid can run along the inside the edge of the screen and cause damage.

Never use cleaning products that contain ammonia, ethyl alcohol, acetone, toluene, ethyl acid, or methyl chloride. These chemicals can react with the materials in the display screen and cause damage.

4. Clean the plastic edge that surrounds the screen with any multipurpose cleaner using a soft cloth. Avoid contacting the screen itself with the cleaner.

Tripod

The Diamante uses only the EasyLock Z12 tripod designed with three straight legs and constructed of high gauge aluminum to provide a lightweight but strong and stable stand for your Diamante. When folded, the tripod is 12 inches long.

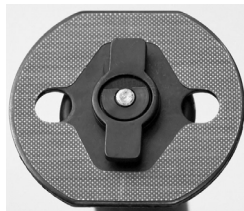
To use a different tripod with the Diamante, it is necessary to remove the bottom plate on the tripod interface. Removing the bottom plate, also removes the tilting mechanism. Please visit the Stenograph Help Desk at www.stenograph.com for instructions on removing the Diamante plate.

Attaching the Tripod

On the bottom of the Diamante is a positive locking mechanism that looks like a large, round keyhole. The top of the EasyLock Z12 tripod fits like a key into the recessed tilt mechanism.

To attach the tripod, follow these steps:

1. Fully extend each leg of the tripod, making sure the braces lock.
2. Set the tripod on the floor.
3. Loosen the thumb-lock knob on the tripod base.
4. Extend the inner tripod tube to a comfortable height.
5. Turn the tripod head so that one of the flat sides of the tripod head is facing you and tighten the thumb-lock knob.



EasyLock Z12 Tripod Head

6. On the bottom of the Diamante, locate the positive locking mechanism that looks like a large, round keyhole. The top of the EasyLock Z12 tripod fits like a key into the recessed tilt mechanism.
7. Lift the Diamante on two sides of the machine and lower it evenly onto the top of the tripod with one of the flat sides of the writing machine facing you.



8. Grasp the inner tripod tube with one hand and with the other hand, rotate the machine clockwise until you hear a solid click. Ensure the Diamante is firmly attached to the tripod tube.

Adjusting the Tripod Height

1. Grasp the tripod tube firmly, directly beneath the Diamante with one hand.
2. Using your other hand, loosen the thumb-lock knob on the tripod. As you loosen the thumb-lock, support the weight of the Diamante with your hand.
3. Adjust the Diamante to the desired height.
4. Tighten the thumb-lock knob.

Tilting the Diamante

The Diamante is constructed with a built-in recessed tilt mechanism. Once the Diamante is secured on the tripod, tilt the writing machine forward or backward within 10 degrees to a position comfortable for your writing style.

To tilt the Diamante:

1. Open the Tilting screen before adjusting the tilt position of the Diamante.
2. Position one hand on the back of the Diamante behind the Tilting screen and the other hand on the front of the machine under the vowel keys.
3. Gently lift up or push down to the desired position. The movement of the Tilting mechanism is stiff to ensure the position of the desired tilt is secure while writing.

Removing the Tripod

To remove the tripod, follow these steps:

1. Position the tripod firmly on the floor.
2. Locate the quick release lever on the left underside of the Diamante.
3. Push the quick release lever towards the back of the Diamante and then rotate the Diamante counterclockwise one quarter of a turn.
4. Lift the Diamante from the tripod.

Writing on the Diamante

Chapter 3, *Writing on the Diamante*, provides an overview of the Diamante menus and details Diamante features. Some of the detailed features include loading dictionaries, setting audio options, viewing SD card directories, creating J-Defines and searching steno and text on the Tilting screen.

Diamante Setup

Installing the Diamante USB drivers on your computer is necessary in order to write realtime with a USB cable, load dictionaries and install updates. The Diamante USB drivers are located on the Diamante®/Wave™ Utilities and Tutorial CD, which comes with your Diamante. See [Install the Diamante USB Drivers](#) on page 18.

Before writing on your Diamante, ensure there is a Data SD and Backup SD in the appropriate SD slots and charge the battery. The Diamante uses a Data SD card to store steno notes, timestamps, audio files when the audio option is selected and the associated job dictionary when J-Defines are created for the job.

The Backup Secure Data (SD) card that comes with your Diamante is used as a backup for your steno notes, timestamps and audio. This card is formatted at the Stenograph factory. If you insert a different SD card in the Backup SD slot, it must be formatted in the Diamante before you can begin writing. **The Diamante requires a Backup SD card in order to operate.**

Although you can use the Diamante with the AC adapter/charger, Stenograph recommends that you charge the battery in your Diamante before using it for the first time. See [Batteries](#) on page 14 for detailed information about charging your battery.

Tutorial Clips

The Diamante®/Wave™ Utilities and Tutorial CD contains short videos with audio designed to assist you in learning about select Diamante features. See [Introduction](#) on page 7.

Accessing Diamante Features

When you turn the Diamante On, the Opening menu displays. The Opening menu is the first of two main menus accessible when not writing on the Diamante.



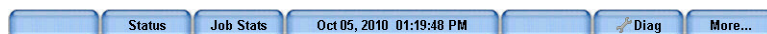
Opening Menu

The Opening menu provides access to features that allow you to:

- view Data and Backup SD card, memory and thumb drive directories.
- format Data and Backup SD cards.
- copy files from memory.
- reopen a file to append further testimony and playback audio.
- set audio, display, translate and general Diamante options.
- manage wireless settings.
- make adjustments to Keyboard Settings and load keyboard profiles.
- start test mode.
- create j-defines.
- open the second menu.

Second Menu

Pressing **More** on the Opening menu displays the second menu.



Second Menu

The second menu provides access to features that allow you to:

- display Diamante software version, free space on the Data SD card and wireless information.
- display job data such job size, number of pages and the use of audio and a job dictionary.
- display the approximate minimum, maximum and average strokes per minute for the job along with a graphical representation of the varying number of strokes per minute throughout the job.
- display the total number of strokes for all jobs taken.
- perform diagnostics.
- display battery status information.
- clear files from memory.
- return to the Opening menu.

Writing Menus

Once you begin writing on the steno keyboard, the first of two Writing menus replace the Opening menu.



First Writing Menu

The First Writing menu includes features that allow you to:

- close the file.
- insert electronic marks.
- search for the last question.
- create J-Defines.
- access the second Writing menu.

Second Writing Menu

Pressing **More** on the First Writing menu displays the second Writing menu.



Second Writing Menu

The second Writing menu includes features that allow you to:

- toggle the Tilting screen display between steno only, text only, text with vertical notes or text and Brief It when Brief It is active.
- scroll through the steno or text on the Tilting screen.
- search for the last Q, A, untranslate, StenoMark, and steno on the Tilting screen.
- display status information about the Diamante.
- set audio options.
- change Tilting screen text color, font size and backlight level.
- perform keyboard adjustments, save profiles and load profiles.
- playback audio.
- access a third menu to display the Brief It pane and create briefs, when Brief It is active.
- access the First Writing menu.

Return to First Writing Menu

Continue writing, pressing **More** on the second Writing menu or pressing **Quit** on the Brief It menu returns you to the First Writing menu.

Return to Opening Menu

Pressing **End** on the First Writing menu automatically closes the current job and returns you to the Opening menu. If the *Prompt to End Job* option is active, you are prompted with a confirmation message to close the job each time you press the End button.

Writing Jobs



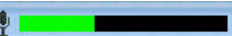
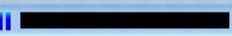

The Diamante stores steno notes, timestamps, job dictionaries, audio files and J-Defines on the Data SD card. The Diamante also saves steno notes, timestamps and audio files to the Backup SD card; and saves steno notes and timestamps to memory.

The Backup SD card is not designed to be removed from the Diamante unless, in a rare occurrence, it is necessary to locate a job that cannot be found in memory or on the Data SD card. The Backup SD card must be in the Diamante in order for the steno machine to operate. Never remove the Backup SD card while the Diamante is On.

To begin writing:

1. Turn the Diamante **On**. Press the first function button on the left.
2. The Diamante logo displays briefly on the Tilting screen followed by the title bar across the top of the screen and the Opening menu at the bottom.
3. The Title Bar shows the following information:



- —the approximate amount of charge remaining for the main battery. When the gauge is completely green, the battery is fully charged. As the battery level changes or the Diamante is charging, the gauge changes. See [Batteries](#) on page 14 for more information about Diamante batteries.
 - —the approximate amount of space remaining on the Data SD card. See [Data SD Card](#) on page 52.
 - —the microphone gauge displays when you begin writing and indicates the audio is recording. The gauge shows the sound level for the recording input. **The default for audio recording is set to Off.** See [Audio](#) on page 40 to turn audio recording On.
 - —the double bars display when writing and the audio is paused by the Diamante Auto Pause Resume feature or by a realtime Pause Audio dictionary definition. See [Audio](#) on page 40 for more information about audio recording.
 - —the no microphone icon displays when no audio is recording while writing. See [Audio Hardware Setup](#) on page 40 for more information about audio setup.
 - *Strokes*—the number of steno strokes written for the open file.
 - *SPM*—the average number of strokes written per minute.
 - *Pages*—the estimated number of text pages in the open file.
4. Diamante menus allow you to perform a function or select to display another menu.

The Opening menu is the first of two setup menus used to select options prior to writing.



5. When you write a steno stroke, the Diamante opens a new file and replaces the Opening menu with the first of two writing menus.



6. To close the job when finished writing, press **End**. The Diamante finishes writing the steno and audio to the Data SD card and closes the current file.

If the option, *Prompt to confirm ending job* is active, a confirmation prompt displays. Press **End** to close the job or continue writing to cancel the message. See [Prompt to End a Job Option](#) on page 78 for information about the Prompt to confirm ending job option.

The Diamante names files using a year, month, date and time format. For example:
20090716-142341 (July 16, 2009 at 2:23:41 p.m.). Job files are stored in folders identified by year and month. For example, 200907. By default, the newest file is listed first.

7. To turn the Diamante Off, press the **Off** button on the Opening menu.

Use the Reopen feature to reopen an existing file and append same day testimony. You can search, readback and play audio in reopened files. See [Reopen](#) on page 79 for details on reopening a job.

A/An Resolution

A/An resolution automatically selects the correct word, “a” or “an” based on the word that follows. The steno translates as “a” before consonants and as “an” before vowels and the numeral 8.

The steno, A, must be defined as "a" (no quotes) in your dictionary in order for the A/An Resolution feature to work. If the dictionary entry is defined as a conflict, this feature does not work as described.

To turn A/An resolution Off or On:

1. From the Opening Menu, press **Setup, Trans. Opt.** The current status of the A/An option displays on the screen.
2. Press the **Up/Down** buttons as necessary to highlight the *A/An option*.
3. Press the **On/Off** button to toggle the A/An option On or Off.
4. To display the Opening menu, press **OK, More, Quit**.

Audio

The Diamante allows you to record an audio file that is automatically synchronized to your written steno notes. To record, you must enable the Diamante audio option, *Record Audio During Job* and connect a microphone to the Diamante. Stenograph recommends using a battery powered microphone.

The Diamante saves the audio files to the Backup SD and Data SD cards. Audio files take up additional space on the SD cards. When the *Record Audio During Job* option is enabled, the additional space is always used regardless of whether or not you have a microphone connected to the Diamante and are recording. The amount of additional space is determined by the audio option, *Audio Format*.



When there is less than 75MB available on the Data SD card, you can begin writing a job but no audio records regardless of the audio options selected. The following message displays when there is insufficient space to record: *Space is TOO Low. Audio Will Not Be Recorded To Data SD Card*.

While writing a job and there is only 12MB available on the Data SD card, the audio stops recording. The following message displays: *Space is Low. Audio Has Stopped Recording To Data SD Card*. See [Data SD Card](#) on page 52 to change the Data SD card while writing.

Diamante audio options enable you to listen to the recording live. You can connect a headset or speakers to the Diamante for audio playback. See [Audio Playback](#) on page 42 for more information about audio playback.

Audio Hardware Setup

To prepare for audio recording:

1. Plug the microphone into the microphone jack on the back of the Diamante. 
2. Confirm the Data SD card is properly inserted in the Diamante.
3. If you are using headphones or speakers to listen to the live recording or for playback, plug the headphones into the headphone jack on the back of the Diamante. 
4. The placement of the microphone directly affects the quality of the audio file. Position the microphone away from audio playback devices, such as speakers.
5. Set necessary Audio options. Ensure the option, *Record Audio During Job* is set to On. See [Audio Options](#) on page 40 for audio option details.

Audio Options

The options *Record Audio During Job* and *Audio Format* must be set before opening a job on the Diamante. All other audio options are accessible while writing.

To set audio options:

1. From the Opening or First Writing menu, press **Setup, Audio**.

2. Use the **Up** and **Down** buttons to move the pointer (>>) to identify a feature for selection.

- *Microphone Gain*—indicates the current gain setting for the microphone, **0 - 200%**. If your microphone is battery powered, set the gain lower. A suggested starting point is 110 - 115%. If the microphone is not battery powered, set the gain higher. A suggested starting point is 145 - 155%. Setting this gain too high, may cause audio feedback.

Press the + and - buttons as necessary to set the percent. A graphic bar indicates the selected level. Test the quality and adjust the gain as necessary. You can adjust the gain during a job.

- *HeadPhone Volume*—indicates the current volume level for the audio playback through headphones, **0 - 100%**. A suggested setting is 65%. The audio is amplified when monitoring live audio and may require a lower setting when the *Monitor Live Audio* option is active.

Use the **Quieter** and **Louder** buttons to adjust the volume. A graphic bar indicates the selected level. During a job, you can playback the audio and adjust this option as necessary.

- *Record Audio During Job*—indicates the audio recording status. Press the **On/Off** button to toggle your selection. The default is set to Off. This option cannot be changed once you open a job.
- *Monitor Live Audio*—allows you to listen to the recording live with some amplification through headphones or a headset attached to the Diamante. Press the **On/Off** button to toggle your selection. During a job, you can playback the audio.

When monitoring live audio during the job the audio is amplified. Check the *HeadPhone Volume* setting for an appropriate level.

- *Auto Pause Resume*—allows you to automatically pause the recording after a specific period of time, when no new steno is being input from the steno machine. Audio recording automatically resumes when you begin writing. Using this feature can help conserve SD card space when recording audio on jobs where long or frequent pauses occur. Use the + and - buttons to set the wait time before pausing the audio. The range is between 5 seconds and 15 minutes. Settings from 5 seconds to 2 minutes are made in increments of one second; 2 - 5 minutes in 15 second increments; and 5 - 15 minutes in one minute increments. You can adjust this option during a job.

When using Case CATalyst, you can use existing Case CATalyst dictionary definitions {Pause Audio} and {Resume Audio} to manually pause and resume the audio. It is necessary to place these definitions into your dictionary before loading the dictionary onto the Diamante. When you manually pause the audio using a steno stroke on the Diamante, you must resume the audio with a steno stroke, regardless of the setting for the Auto Pause Resume option.

- If you are not using Case CATalyst, please check with your CAT vendor to verify that your software recognizes pause and resume commands. If pause and resume commands are not recognized, it is recommended that you do not use the Auto Pause Resume option.
- *Audio Format*—allows you to set the audio compression format for recording. A higher compression rate, ADPCM (14.7 MB/hour), produces a better audio quality and requires more space on the Data SD card.

A lower compression rate, GSM (5.8 MB/hour), produces a slightly lower audio recording quality and requires less space. Press the **Change** button to toggle your selection. Audio recorded to the Backup SD card is recorded at the GSM format regardless of this option setting.

This option cannot be changed once you open a file.

3. To display the Opening or First Writing menu, press **OK, More, Quit**.

Audio Playback

The Play feature becomes available when you use a Search feature while writing a job. Play allows you to playback the audio portion of the file from the point of the highlighted text forward in the file. The Diamante highlights the corresponding steno and text on the Tilting screen during the audio playback. You can stop the playback at any time. A set of external speakers or headset is required for audio playback.

To play audio while writing a job:

1. Using a Search feature, look for any of the following: Last Q, Last A, Last Mark, Steno or Untranslate. See [Search](#) on page 81 for information about searching.
2. When you identify the position in the file from which you want to playback the audio, press the **Play** button. The Diamante begins the playback and simultaneously highlights the corresponding text and steno.
3. Use the **Quieter** and **Louder** buttons to adjust the playback volume. If applicable, you may also need to adjust the volume control on your headset or speakers.
4. Press **Stop** when finished.

Auto-Conflict Resolution

Auto-Conflict Resolution, when turned On, automatically selects the first choice of the conflict. This prevents the display of conflicts on the Diamante screen for easier readback. This option does not affect the realtime output when writing realtime to a computer.

To turn Auto-Conflict On or Off:

1. From the Opening Menu, press **Setup, Trans. Opt.** The current status of the Auto-Conflict Resolution option displays on the screen.
2. Press the **Up** and **Down** buttons as necessary to highlight the *Auto-Conflict Resolution* option.
3. Press the **On/Off** button to toggle the *Auto-Conflict Resolution* option On or Off.
4. To display the Opening menu, press **OK, More, Quit.**

Backup SD Card

The Backup SD card stores steno notes, timestamps and audio files as a backup to the Data SD card. In a situation where there is no main battery, not enough charge in the main battery or no AC adapter/charger power, the Diamante uses the backup battery to save the steno notes, timestamps and audio files to the Backup SD card.

It is necessary to insert a Backup SD card into the Diamante in order to operate the writing machine. If you remove the Backup SD card while the writing machine is On, the Diamante beeps and displays the message: *Backup SD Card Missing!!! Insert Card or Turn Off*. You must reinsert the card to use the Diamante.

The Diamante requires a minimum 1 GB Backup SD card, supporting SD cards from 1 to 2 GB and SDHC cards from 4 to 32 GB. The Backup SD card must be formatted in the Diamante. When you insert an SD card into the Backup SD slot on the Diamante, you are prompted to format the card if it has not previously been formatted in the writing machine. See [Format the Backup SD Card](#) on page 44.

You can view files on the Backup SD card when working on the Diamante. **The Backup SD card is designed as a backup and is not intended for archiving steno notes.** Once the Backup SD card is full, the new files overwrite the oldest file or files. Stenograph recommends carrying an extra SD card.

In the rare event it is necessary to retrieve a file from the Backup SD card, you can use the Backup Card Reader utility. The Backup SD card must be removed from the Diamante and inserted into a SD Flash Card Reader that connects to your computer. A built-in SD card slot reader on your computer cannot read the Backup SD card. Ensure you reinsert the Backup SD card into the Diamante when finished. **The Diamante requires that a Backup SD card is in the steno machine in order to operate.** See [Backup SD Card Reader](#) on page 113 for more information on the Backup Card Reader.

Format the Backup SD Card

The Backup SD card must be formatted in the Diamante. The card is verified when inserted into the Backup SD slot on the Diamante. You are prompted to format the card if it has not been formatted in the writing machine.

Formatting a Backup SD card erases all the files and data stored on the Backup SD card. Confirm that all the files on the card are no longer necessary. See [Format a Data SD Card](#) on page 52 for instructions on formatting a Data SD card.

To format the Backup SD card:

1. Hold the Backup SD card straight without angling and gently insert it into the Backup SD slot on the Diamante until you hear a soft click. If the card does not easily insert, do not force it. Remove the card and reinsert it.



2. Turn the Diamante **On**.
3. From the Opening menu, press **Storage, Backup, SG Format**. A message prompts you to continue.
4. Press **Yes** to format the Backup SD card. A preparation message, along with a status bar displays as the Diamante formats the Backup Card. Press **No** to cancel the format.

5. When the Backup cards finishes formatting, the Diamante displays a completion message.
6. To display the Opening menu, press **OK** twice.

View Files on the Backup SD Card

The Diamante names job files using a year, month, date format followed by the time. For example: 20090716-142341 (July 16, 2009 2:23:41 p.m.) The newest file is listed first. File size accompanies each file name.

To view the Backup SD card directory:

1. From the Opening menu, press **Storage, Backup, Files**.
2. Press the **Up** and **Down** buttons to scroll through the list of files.
3. To display the Opening menu, press **Quit, OK**.

Beeper Volume

The Diamante has a beeper to alert you to specific messages on the Tilting screen, such as *Low Battery*.

To adjust the beeper volume:

1. From the Opening menu, press **Setup, More, Options**.
2. Press the **Up** and **Down** buttons as necessary to highlight the *Beeper Volume* option.
3. Press the **Change** button to toggle the Beeper volume between Soft and Loud. The Diamante emits a softer or louder tone indicating the volume level selected.
4. To display the Opening menu, press **OK, More, Quit**.

Brief It

Brief It is a translation feature, on the Diamante V2.0 or higher, that suggests conflict free brief forms for words and phrases that you write during a realtime job. When you write the same three or more steno strokes more than once, the Diamante generates a brief form and displays it in the Brief It pane.

The Diamante Brief It feature is designed for use when not in a realtime situation writing to CAT software. If you use Brief It on the Diamante and on your CAT system, the Suggested briefs may not match. Stenograph recommends against using the Diamante Brief It feature during realtime.

There are two types of briefs, Suggested and Reminder. Suggested briefs are generated during realtime when three or more steno strokes are written for the same text more than once and no brief exists in a dictionary currently used for translation. To use the Suggested brief, write steno for the brief twice, the default, to accept it. Accepted briefs are stored in the dictionary within memory and the current job dictionary. When you write the same steno of a used brief in a subsequent job, the Diamante provides a Reminder brief. You can also suggest a new brief or reject a brief. See [Managing Briefs](#) on page 48.

The Diamante Translate Option, [Use Brief It](#), must be set to Yes before beginning a job for the Brief It feature to be active and available during a realtime. When Brief It is active, the Diamante defaults to the Brief It view when you begin writing. Text shows on the left side of the screen and the Brief It pane on the right. The most recent brief always displays at the bottom of the Brief It list.

Brief It automatically creates a J-Define the first time you use a Suggested brief. J-Defines made for the current job are placed into a job dictionary on the Diamante that uses the same date/time name as the job. The job dictionary is stored on the Data SD card as a subfile of the job. If you are writing realtime using Case CATalyst V13 or higher, the definition is also sent to the global table of the Case CATalyst realtime file. All J-defines stored in the dictionary within memory are automatically used on subsequent jobs. If you do not want to use the J-Defines in another job, it is necessary to clear them from the dictionary within memory. See [J-Defines](#) on page 60 for more information.

Diamante Suggested and Reminder briefs along with used briefs display in the Brief It pane on the right side of the screen, in a color coded background. The newest Suggested or last used brief display at the bottom of the list. Suggested briefs have a yellow background, Reminder briefs a green background and used briefs a gray background. When you write a Suggested brief, the background color for the brief turns gray, moves to the bottom of the list and the J-Define is created. You can reject a Suggested brief or request a new one. See [Managing Briefs](#) on page 48 for more information.

Briefs are not Suggested when an entry exists in a dictionary currently used for translation. For example, during the job you write AB/OT/HRAB/TOERS for the name "Abbott Laboratories." A job dictionary currently used for translation contains the entry A*L defined as "Mr. Allen." Brief It does not suggest A*L for the Abbott Laboratories brief but creates and suggests a brief that does not conflict, such as A*LT.

If you write a steno outline that matches the steno stroke for a Suggested brief or do not want to use the brief, you can write the {Delete} command to remove the steno and text from the transcript. Using the Delete command does not remove the define from the dictionary. You may want to use the Brief It option, [Write Twice to Define](#). See [Brief It Options](#) on page 50 for more information.

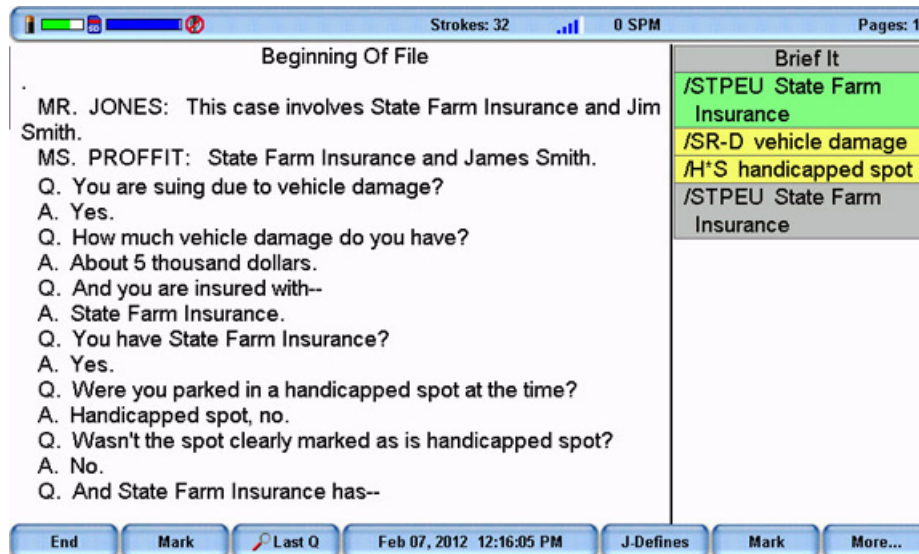
Case CATalyst V13 or Higher

The Diamante Brief It feature is designed for situations in which you are not writing realtime to your CAT system. If you are using Case CATalyst V13 or higher, defines are exchanged between Case CATalyst and the Diamante 2.0 or higher while writing realtime. It is strongly recommended to only use the Brief It feature on your Diamante or Case CATalyst but not both locations.

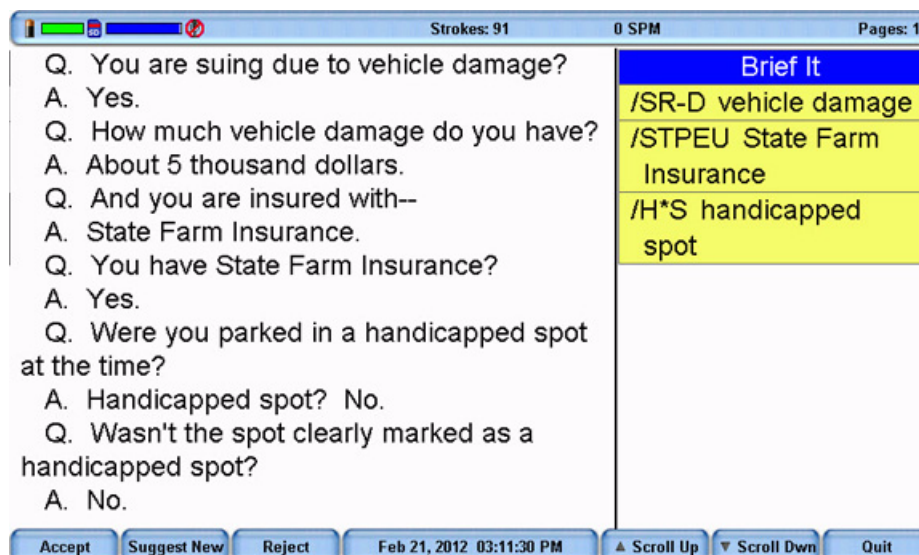
If you are using the Brief It feature on your Diamante with Case CATalyst V13 or higher, selecting to Undo a global, Undo Last Global or delete a global in Case CATalyst does not remove the definition from dictionary in Diamante memory or the job dictionary for the file on the Diamante. To remove J-Defines from the Diamante, it is necessary to clear them from the dictionary stored in memory. See [J-Defines](#) on page 60 for more information.

Managing Briefs

Diamante Suggested and Reminder briefs along with used briefs display in the Brief It pane in a color coded background. The newest and last used briefs display at the bottom of the list. Suggested briefs have a yellow background, used briefs a gray background and Reminder briefs a green background.



To manage briefs during a job, press **More, More, Brief It**. The title bar of the Brief It pane turns blue, indicating it has cursor focus. Use the **Scroll Up** and **Scroll Dwn** buttons to position the cursor on the desired brief. The cursor location is indicated with a dark grey color on the edge of the Brief It pane.



Use the following options as necessary:

Accept

Add the Suggested brief to the job dictionary and turns the background of the Suggested brief gray. During a job, a Suggested brief is automatically accepted and added to the job dictionary when you write it. If writing realtime to CATalyst V13 or higher, the accepted brief is sent to the global table of the Case CATalyst realtime file.

Suggest New

Strike out the current suggestion and suggest a new brief at the bottom of the list.

Reject

Strike out the current suggestion.

Quit

Save the changes and closes the Brief It management screen.

Use Brief It

The Diamante Translate Option, *Use Brief It*, must be set to *Yes* before beginning a job for Brief It to be available on the Diamante. By default, this option is set to *No*. When Brief It is active, the Diamante defaults to the Brief It view when you begin writing. Text shows on the left side of the screen and the Brief It pane on the right. Changing the font size for the screen also changes the size of the Brief It pane and the text within it. You can change the View to not show the Brief It pane, but unless you turn Brief It Off, Suggested briefs continue to be provided. If you turn Brief It off during a job, when you return to writing the job, the View shows text on the left and vertical notes on the right.

When *Use Brief It* is set to *Yes*, two [Brief It Options](#) are available. The options, *Write Twice to Define* and *Only Suggest One Stroke Briefs*, allow you to customize how you use Brief It.

Turn Brief It On or Off Before a Job

1. From the Opening Menu, press **Setup, Trans. Opt.**
2. Press the **Up/Down** buttons as necessary to highlight the *Use Brief It* option.
3. Press the **On/Off** button to toggle the Brief It option On or Off.
4. To display the Opening menu, press **OK, More, Quit.**

Turn Brief It Off During a Job

Once a file is open, you can turn the *Use Brief It* option Off but you cannot turn it On. Once the option is turned off while a file is open, you cannot turn it back on until you close the current job.

To turn Brief It Off while writing a job:

1. From the first Writing menu, select **More, Setup, Trans. Opt.**
2. The cursor points to the *Use Brief It* option. Press the **Off** button. If you press OK without changing the option, the status of the option does not change.

Brief It Options

Write Twice to Define

Brief It, by default, automatically creates a J-Define the first time you use a Suggested brief. When this option is active, you must consecutively write a brief twice before Brief It creates a J-Define. All subsequent uses of the brief only need to be written once. For example, Brief It suggests, S*F, for “State Family Insurance.” You want to use the brief so you write, S*F/S*F, which places the words “State Family Insurance” in your transcript and puts the definition, S*F = State Family Insurance, in your job dictionary. To use the brief again, write, S*F.

You may want to use this option to try a Suggested brief before making it a definition or to prevent a possible misstroke in accepting a brief. The default is Yes.

Only Suggest One Stroke Briefs

Brief It, by default, always suggests a one stroke brief with the asterisk before suggesting a two stroke brief. When this option is active, Brief It suggests only one stroke briefs.

Copy Log

In the rare instance your Diamante experiences an error or an exception, Copy Log automatically saves the information to a log file. Technical Support may ask you to send the information to Stenograph for analysis.

To copy the error information:

1. From the Opening Menu, press **More, Diag, Copy Log**. The Diamante copies all the appropriate log information to the Data SD card, placing it in the Support Info Files folder.
2. To return to the Opening menu, press **Quit, More**.
3. Insert the Data SD card into the USB SD Flash Drive reader or into a built-in SD slot on your computer.
4. Send the files in the Support Info Files folder on the Data SD card to Stenograph as an e-mail attachment.

Data SD Card

The Diamante uses a Data SD card to store steno notes, timestamps, audio files when the audio option is selected and the associated job dictionary when J-Defines are created for the job. The Diamante comes with a 4 GB Data SD card.

The actual number of files a Data SD card holds varies according to the size of the SD card and the size of each steno note, timestamp and audio files. For example, a 1 GB Data SD card holds approximate 600,000 pages without audio files. Depending on the audio compression option selected, a 1 GB Data SD card holds approximately 170 hours of audio at the lower GMS compression rate and 70 hours at the higher ADPCM compression rate.

The SD card icon on the title bar of the Tilting screen provides a general indication of the remaining space on the Data SD card. When the gauge is completely blue, the entire card is available. If no SD card icon displays, there is no SD card in the Data SD slot or the Diamante does not recognize the Data SD card.

If the Data SD card is corrupt, full or missing from the Data SD slot, the Diamante displays warning messages but allows you to continue writing. Steno notes continue to be saved to memory and the steno, timestamps and audio continue to be saved to the Backup SD card. Stenograph recommends carrying an extra SD card.

Format a Data SD Card

You may want to format a previously used Data SD card for use in the Diamante. For example, you have archived all the files on the Data SD card and want to start with a clean Data SD card.

To format a Data SD card:

1. Gently insert a Data SD card into the Data SD slot on the Diamante until you hear a soft click. If the card does not insert easily, do not force it. Remove the card and reinsert it, ensuring it is straight without angling.
2. From the Opening menu, press **Storage, SD Card, Format**. A message prompts you to continue.
3. Press **Yes** to format the Data SD card. A message box displays, indicating the progress of the format. To abort the format, press **No**.
4. A message displays confirming format completion.
5. To display the Opening menu, press **OK, Quit, OK**.

Manage Data SD Card Space

You can check the amount of free space left on a Data SD card. As the Data SD card reaches capacity while writing a job, the Diamante beeps and a series of prompts warn that the Data SD card is almost full. If you are recording audio while writing, a series of prompts warn that recording will stop soon. When the Data SD card reaches only 12 MB, a message displays indicating that audio is no longer recorded to the Data SD card. If you start a job and there is 75MB or less available on the Data SD card, audio is not recorded to the Data SD card.

Once a Data SD card is full, steno, timestamps and audio are no longer saved to the Data SD card but continue to be saved to the Backup SD card. Steno and timestamps also continue to be saved to memory.

You can change the Data SD card any time during the writing process by first closing the open file and turning Off the Diamante. When you insert a new Data SD card and turn the Diamante On, a new file is created as you begin writing. Files cannot span Data SD cards. You can merge the files together later on your CAT system.

Check the Data SD Space

1. From the Opening menu, press **Storage, SD Card, Information**.
2. To display the Opening menu, press **OK, Quit, OK**.

Change the Data SD Card

To change the Data SD card while writing:

1. On the First Writing menu, press **End** to close the open file.
2. Turn the Diamante Off and remove the current Data SD card from the Data SD card slot.

The message, *Disk in use -- Put it Back!* displays when you attempt to remove the Data SD card without closing the file by pressing **End**; or you attempt to remove the Data SD card before the Diamante has finished writing information to it.

3. Gently insert a new formatted Data SD card until you hear a soft click. If the card does not easily insert, do not force it. Remove the card and reinsert it, ensuring it is straight without angling.
4. Turn the Diamante On and continue writing.

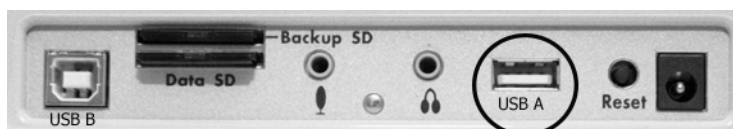
View and Copy Data SD Card Files

The Diamante names job file using a year, month, date and time format. For example: 20090716-142341 (July 16, 2009 2:23:41 p.m.) Job files are stored in folders identified by year and month. For example, 200907. By default, the newest file is listed first.

Each job file contains subfiles that include: steno notes with timestamps, an associated audio file when audio is recorded, audio pause and resume information and an associated job dictionary when a job dictionary is used.

Only the file name for your job displays on the Data SD card. The individual subfiles display on the destination drive when you read the job into your CAT system or use the DateTimeToStentura program.

When copying, the Diamante automatically copies your selected files from the Data SD card to a USB storage device inserted into the Diamante USB A (host) port. Be sure to insert your thumb drive before copying files.



To view and copy files on the Data SD card:

1. From the Opening menu, press **Storage, SD Card, Files**.

2. Job files are organized in folders by year and month, with the newest folder first. Press the **Up** and **Down** buttons to highlight a folder. Use **Date Sort** to toggle folders between ascending and descending order.

An additional folder, Support Info Files, may be visible along with the job folders. If an error occurs, the Diamante writes error information to this folder. Stenograph uses the information to research and improve the software. See [Copy Log](#) on page 51 for more information.

Steno notes copied from memory to the Data SD card display at the root of the card in date order and are identified with the .sgstn file name extension. Although memory stores other file information in addition to the steno note file, only the steno note file is available for copy. See [Memory](#) on page 74 for more information.

3. Press **Folder** to display the job files for the selected folder. Job files display in date order, newest files first, with the following subfile information: the file size in megabytes, the estimated number of transcript pages, an indicator when there is an associated Audio file and an indicator when there is an associated job dictionary.

Use **Date Sort** to toggle the display of files in ascending and descending order.

4. To copy files, press the **Up** or **Down** buttons to highlight the desired files. When finished, press **Select** to highlight the files.
5. Ensure there is a thumb drive in the Diamante USB A (host) port and press **Copy**. The Diamante automatically copies the selected files to the thumb drive. The Opening menu displays when the copy is complete.

Dictionaries

The Diamante uses Case CATalyst converted dictionaries or an RTF/CRE dictionary converted by the Rtf2Writer Dictionary Conversion program. Valid dictionaries include your personal dictionary, any job dictionary and the Case CATalyst Power Define dictionary. You can also export the Case CATalyst Spell Check Wordlist and Prefixsuffixrules.ini file when using Case CATalyst 8.05 or higher. See [Convert RTF/CRE Dictionaries](#) on page 110 for more information about the Rtf2Writer Dictionary Conversion.

The Diamante can hold approximately 900,000 dictionary entries, depending on the size of the entries. The total number of combined personal and job dictionary entries cannot exceed 900,000.

Load Dictionaries onto the Diamante

The Diamante loads Case CATalyst dictionaries from your computer via USB cable or WiFi. In order to export your Case CATalyst dictionaries via USB cable you must have installed the Diamante USB driver on your computer. See [Install the Diamante USB Drivers](#) on page 18 for instructions on loading the driver. To export dictionaries via WiFi, you must have Case CATalyst version 12.5 or higher and a WiFi enabled Diamante version 1.13 or higher.

Each time you load dictionaries, the newly loaded dictionaries overwrite all other dictionaries on the Diamante. Dictionaries remain on your Diamante until you load dictionaries again. When loading dictionaries, J-Defines held in the dictionary within the Diamante memory are not cleared. To prevent previous J-Defines made on the Diamante from applying to future jobs, you must manually clear them. See [Clear All J-Defines](#) on page 63.

To export Case CATalyst dictionaries to the Diamante:

1. Ensure your Diamante and computer are turned **On** and fully booted.
2. Start Case CATalyst.
3. Do one of the following:

USB Connection

Each end of the USB cable has a different connection plug. Connect the appropriate end of the USB cable to the USB B (client) port on back of the Diamante and the other end to the USB port on the computer.



Diamante Back Port Panel

WiFi Connection

Ensure the Diamante WiFi option is On and you are connected to the same network as the Case CATalyst computer.

4. In Case CATalyst, open the Export function and select the **élan/Fusion/Diamante** tab. In Case CATalyst V10.04 or earlier, select the **élan/Fusion** tab.

5. Select the dictionaries you want to load onto your Diamante. The Personal Dictionary is selected by default to ensure the most recent version on your Diamante.

You can also select the Case CATalyst Power Define dictionary. See [J-Defines](#) on page 60 for additional information about using Case CATalyst Power Define dictionary.

To load the Spell Check Wordlist and the Prefixsuffixrules.ini file, if applicable, check the appropriate box for each option. You must be using Case CATalyst V8.05 or higher. See [Suffix Handling](#) on page 87 for more information.

6. Do one of the following:

USB Connection

Click the radio button USB (All)

WiFi Connection

Click the radio button WiFi (Diamante)

7. Click **Export**. The Diamante beeps and briefly displays a progress bar along with a series of messages as the dictionaries load.
8. When the Diamante finishes loading the dictionaries, it reboots, displaying the Opening menu. A verifying dictionary message may display. Depending on your Case CATalyst setting, the message, *Export Complete*, may display.

Using Job Dictionaries

In addition to your main (personal) dictionary, you can use Case CATalyst exported job dictionaries for translation when writing on the Diamante. You must load Case CATalyst job dictionaries onto the Diamante in order to select them for translation.

When using the Rtf2Writer program, you can load up to seven job dictionaries on the Diamante. See [Convert RTF/CRE Dictionaries](#) on page 110 for more information.

You can set job dictionary priority on the Diamante. When a stroke appears in more than one dictionary with a different definition, the job dictionary with the highest priority is used to translate the stroke. All selected job dictionaries have a higher priority than the main dictionary and the J-Defines in the dictionary within the Diamante memory.

To set dictionary priorities:

1. From the Opening menu, press **Dict**.
2. From the Dictionary menu, press **Select**. The Job dictionaries display in the order they were loaded onto the Diamante.

The following information displays for each dictionary:

- *Priority*—the translation priority for the dictionary. One is the highest and ten is the lowest when dictionaries are selected.
- *Job Dictionary Name*—the file name of the job dictionary.
- *Date/Time*—the date and time the job dictionary was loaded on the Diamante.
- *Size*—the size of the job dictionary.

3. Select job dictionaries to use for translation and set the priority. Use the **Up** and **Down** buttons to move the pointer (>>) to the desired job dictionary and press **Select**. The dictionary priority is set in the order you select the dictionaries. To reorder the priority, press **Clear** to deselect all the dictionaries so that you can reselect the dictionaries in the desired priority order.

When the Case CATalyst Power Define dictionary is loaded, the Diamante automatically selects it for use when making a J-Define. The Power Define dictionary takes priority over all other dictionaries when creating a J-Define. It does not display in the dictionary list.

4. Do **one** of the following:
 - Press **Accept** to save the selections. The Dictionary menu displays.
 - Press **Quit** to exit without making changes to the existing job dictionary priorities. The Dictionary menu displays.
5. To display the Opening menu, press **Quit**.

Display Set Strokes Per Minute (SPM)

This option allows the average number of strokes per minute to display on the Title bar and Status screen. The Title bar shows the approximate number of strokes per minute, SPM, while writing. The Status screen shows strokes per minute data for the most recent job. While writing, the Status screen shows strokes per minute data for the current job.

1. From the Opening menu, press **Setup, More, Options**.
2. Press the **Up** and **Down** buttons as necessary to highlight the *Display Strokes per minute (SPM)* option.
3. Press the **Change** button to toggle the option between Yes and No. Yes is the default.
4. To display the Opening menu, press **OK, More, Quit**.

Electronic Marks

Use the Mark function to electronically mark locations in your steno notes. You can use the Search feature to locate the Marks in the file.

To mark your steno notes:

1. From the First Writing menu, press either **Mark** button.

When no dictionary definition exists for the Mark, the symbol /! displays in the Text and in the Vertical Notes on the Tilting screen. If you have defined the Mark in your dictionary, the symbol, ! , displays in the Vertical Notes and the text definition displays in the text.

2. Continue writing.

J-Defines

J-Defines are steno-based words or phrases that are specific to a job, such as names and technical terms. You can create J-Defines on the Diamante before beginning or during a job. The Diamante automatically uses the J-Defines, along with any other selected job dictionaries, when you write a job. J-Defines created during a job apply from the point you define them and do not apply to text you have already written.

If you are using Case CATalyst V13 or higher and the Diamante V2.0 or higher, J-Defines made on the Diamante, including used briefs, are automatically sent to Case CATalyst when writing realtime via USB or WiFi connection. The defines are sent to the global table of the Case CATalyst realtime file. Any dictionary definitions made in the Case CATalyst file, including D-Defines, J-Defines, K-Defines and Other Defines, are automatically sent to the Diamante. The exchanged definitions apply from the point of creation forward to all new realtime steno written.

J-Defines made for the current job are placed into a job dictionary on the Diamante that uses the same date/time name as the job. The job dictionary is stored on the Data SD card as a subfile of the job. Case CATalyst automatically transfers the associated job dictionary to the computer when reading the steno notes from the Data SD card.

All J-Defines created on the Diamante are stored in the dictionary within the Diamante memory and remain in there until you clear them. The file can hold approximately 100,000 J-Defines. J-defines from the dictionary in memory are automatically used on subsequent jobs. If you do not want to use the J-Defines in another job, it is necessary to manually clear them. See [Clear All J-Defines](#) on page 63.

You can save all the J-Defines from the dictionary within the Diamante memory to a dictionary file, `jdefines.sgdct`, on the Data SD and use the file in Case CATalyst as you would any job dictionary. For example, you can use the file in translations or merge the file into your personal dictionary. See [Write All J-Defines to a Data SD Card](#) on page 63 for information about copying the J-Defines.

You can export J-Defines from Case CATalyst to your Diamante. You can also export the Case CATalyst Power Define dictionary and use Power Defines commands when creating J-Defines on the Diamante. See [Dictionaries](#) on page 55 for more information about loading job dictionaries.

Create J-Defines

When creating J-Defines on the Diamante, you can fingerspell the text or you can stroke defined steno outlines to enter the text portion of a J-Define. The Diamante's [Spell Mode](#) allows you to use steno stroke equivalents for each letter to enter the text portion of a J-Define. When stroking defined steno outlines in the J-Define Text field, the Diamante automatically enters the text portion of an existing definition from your dictionary. For example, you have STKPWHR defined in your dictionary as<Question>. To define a misstroke for a question bank, you write STKPW R in the J-Define Steno field and press OK. In the J-Define Text field you write STKPWHR. The Diamante automatically inserts <Question>. If you are using Case CATalyst V13 or higher and the Diamante V2.0 or higher when writing realtime via USB or WiFi connection, the definition is sent to the global table of the Case CATalyst realtime file.

When an entry in your dictionary conflicts with a steno outline used by the Spell Mode feature, the steno outline in the Spell Mode feature takes priority. It is necessary to fingerspell the definition for any entry that conflicts with the Spell Mode feature. For example, you want to J-Define the misstroke for TKELG as “Dell.” You write the steno stroke TKELG in the J-Define Steno field and TKEL in the J-Define Text field. Since the Spell Mode feature uses TKEL for <Delete Space>, the Diamante automatically enters <Delete Space> in the J-Define Text field. It is necessary to fingerspell Dell in order to define TKELG as “Dell.”

The exception to Spell Mode priority is for the #*. The #* is internally defined in the Diamante as Delete. If a dictionary used for translation contains another definition, the definition in dictionary takes priority.

When you use Power Define commands from a Case CATalyst Power Define dictionary loaded onto the Diamante to create J-Defines, the Spell Mode feature is disabled and the Power Define dictionary takes the highest priority over other dictionaries in the J-Define feature.

Create J-Defines Using Power Defines

You can use Power Define commands from a Case CATalyst Power Define dictionary loaded onto the Diamante, in lieu of Spell Mode, to create J-Defines. The Power Define dictionary allows the use of your customized entries to fingerspell, write format commands and navigate within the J-Define feature. When you load your Case CATalyst Power Define dictionary onto your Diamante, the Spell Mode feature is disabled and the Power Define dictionary takes the highest priority over other dictionaries in the J-Define feature. If you are using Case CATalyst V13 or higher and the Diamante V2.0 or higher when writing realtime via USB or WiFi connection, the definition is sent to the global table of the Case CATalyst realtime file.

When creating a J-Define, the Power Define dictionary loads into the dictionary priority list but does not display in the list of Job Dictionaries. A Power Define entry takes priority if it conflicts with another dictionary entry. When finished creating J-Defines, the Power Define dictionary is removed from the dictionary priority list.

Since the Spell Mode feature is disabled, you may want to put specific format symbols definitions in your Case CATalyst Power Define dictionary to use with the J-Define feature. For example, you use the Colloquy format symbol in your J-defines for speaker identifications. In your Power Define dictionary, you insert an entry using the steno, KOL, with the <Colloquy> format symbol entered in the *Text* of the definition. You export the Power Define dictionary along with any other dictionaries to the Diamante. When writing a job, you stroke “KOL” in the *Text* field of the J-Define feature to insert the <Colloquy> format symbol followed by a speaker name. See [Format Symbols](#) on page 66 for Spell Mode format symbol definitions. See the *Case CATalyst Help* for information on creating Power Define dictionary entries in Case CATalyst.

You may want to review the Spell Mode entries for [Punctuation](#) on page 66 and [Format Symbols](#) on page 66 before exporting your Power Define dictionary. To remove the Power Define dictionary from your Diamante and use the Diamante default Spell Mode entries for J-Defines, export your dictionaries into the Diamante without selecting the Power Define dictionary. See [Dictionaries](#) on page 55 for information about loading dictionaries.

Create J-Defines Using Spell Mode

1. Do one of the following:
 - From the Opening Menu, press **Dict, J-Defines, Add**.
 - From the First Writing Menu, press **J-Defines**.
2. The Add to J-Define screen displays. The total number of J-Defines entries and the amount of remaining space for J-Defines shows on the right side of the screen.
3. In the *J-Define Steno* field, write the steno strokes for the J-Define. If you make a mistake, press the * (**asterisk**) to delete the previous stroke or press **Clear** to delete all the strokes.
4. When finished entering steno outlines, do one of the following:
 - Press **OK**.
 - If using the Power Define dictionary, write the stroke defined as **Tab** or **Enter**.
5. In the *J-Define Text* field, write text for the J-Define. Use uppercase and lowercase letter letters, punctuation and format symbols as defined in [Spell Mode](#) on page 64; or write steno defined in your dictionary as the word or format symbol you are defining. Do any of the following:
 - Write a stroke that is defined in a dictionary, such as <Question>.
 - Write a stroke that is defined in a dictionary and use the [Spell Mode](#) letters to complete the word. For example, write the stroke for Peter and fingerspell "s" "e" "n" to make Petersen.
 - Use the Spell Mode letters to create a word that is not in the dictionary, such as "Kurkowski."
 - If you make a mistake, press the * (**asterisk**) to delete the previous character or press **Clear** to delete the entire entry.
6. When finished, do one of the following:
 - Press **OK** to complete the definition.
 - If using the Power Define dictionary, write the stroke defined as **Enter**.
7. Repeat the previous steps to create additional J-Defines. When finished creating J-Defines, do one of the following:
 - When creating J-Defines before beginning a job, press **Quit** twice to return to the Opening menu.
 - When creating J-Defines while writing, press **Quit**. Continue writing.

Write All J-Defines to a Data SD Card

You can copy all the J-Defines from dictionary in the Diamante memory to a dictionary file, *jdefines.sgdct*, on the Data SD card for use in Case CATalyst. You can then use Windows My Computer, to copy the file from the Data SD card to your Case CATalyst user name.

To copy the J-Defines to the Data SD card:

1. From the Opening Menu, press **Dict, J-Defines**.
2. From the J-Define menu, press **Write**. The following message displays prompting you to confirm the copy: *Ready to Write All J-Defines to Data SD card. Are You Sure?*
3. Press **Yes**. If you want to cancel the copy, press **No**.
4. While the Diamante copies the J-Defines to the Data SD card, the following message displays: *Writing J-Defines to Data SD Card*.
5. To display the Opening Menu, press **Quit** twice.

Clear All J-Defines

To delete all the J-Defines from dictionary in the Diamante memory:

1. From the Opening Menu, press **Dict, J-Defines, Clear**.
2. The following message displays prompting you to confirm the deletion: *Ready to Delete All J-Defines. Are You Sure?*
3. Press **Yes** to clear all J-Defines from the Diamante. If you want to cancel the deletion, press **No**.
4. The Diamante deletes the J-Defines and displays the message: *All J-Defines Deleted*.
5. To display the Opening Menu, press **Quit** twice.

Spell Mode

Use Spell Mode to create J-defines on the Diamante, type a keyboard profile name or WiFi password entering text using the following steno stroke equivalents. Case CATalyst Power Define dictionary entries on the Diamante take priority.

Lower Case Letters

<i>a</i>	<i>/ARBGS or /AEURBGS or /A or /AEU</i>
<i>b</i>	<i>/PW-RBGS or /PW or /-B</i>
<i>c</i>	<i>/KR-RBGS or /KR or /-BG</i>
<i>d</i>	<i>/TK-RBGS or /TK or /-D</i>
<i>e</i>	<i>/ERBGS or /AOERBGS or /E</i>
<i>f</i>	<i>/TP-RBGS or /TP or /-F</i>
<i>g</i>	<i>/TKPW-RGBS or /TKPW or /-G</i>
<i>h</i>	<i>/H-RBGS or /H</i>
<i>i</i>	<i>/EURBGS or /AOEURBGS or /EU or /AOEU</i>
<i>j</i>	<i>/SKWR-RBGS or /SKWR or /-PBLG</i>
<i>k</i>	<i>/K-RBGS or /K</i>
<i>l</i>	<i>/HR-RBGS or /HR or /-L</i>
<i>m</i>	<i>/PH-RBGS or /PH or /-PL</i>
<i>n</i>	<i>/TPH-RBGS or /TPH or /-PB</i>
<i>o</i>	<i>/ORBGS or /OERBGS or /O or /OE</i>
<i>p</i>	<i>/P-RBGS or /P or /-P</i>
<i>q</i>	<i>/KW-RBGS or /KW</i>
<i>r</i>	<i>/R-RBGS or /R or /-R</i>
<i>s</i>	<i>/S-RBGS or /S or /-S</i>
<i>t</i>	<i>/T-RBGS or /T or /-T</i>
<i>u</i>	<i>/URBGS or /AOURBGS or /U or /AOU</i>
<i>v</i>	<i>/SR-RBGS or /SR</i>
<i>w</i>	<i>/W-RBGS</i>
<i>x</i>	<i>/KP-RBGS or /KP or /-BGS</i>
<i>y</i>	<i>/KWR-RBGS or /KWR</i>
<i>z</i>	<i>/STKPWHR or /SAOE-RBGS or /SE-RBGS or /SAOE or /SOE or /SE or /-Z</i>

Upper Case Letters

A	<i>/AFPLT or /AEUFPLT</i>
B	<i>/PW-FPLT</i>
C	<i>/KR-FPLT</i>
D	<i>/TK-FPLT</i>
E	<i>/EFPLT or /AOEFPLT</i>
F	<i>/TP-FLPT</i>
G	<i>/TKPW-FPLT</i>
H	<i>/H-FPLT</i>
I	<i>/EUFPLT or /AOEUFPLT</i>
J	<i>/SKWR-FPLT</i>
K	<i>/K-FPLT</i>
L	<i>/HR-FPLT</i>
M	<i>/PH-FPLT</i>
N	<i>/TPH-FPLT</i>
O	<i>/OFPLT or /OEFPLT</i>
P	<i>/P-FPLT</i>
Q	<i>/KW-FPLT</i>
R	<i>/R-FPLT</i>
S	<i>/S-FPLT</i>
T	<i>/T-FPLT</i>
U	<i>/UFPLT or /AOUFPLT</i>
V	<i>/SR-FPLT</i>
W	<i>/W-FPLT</i>
X	<i>/KP-FPLT</i>
Y	<i>/KWR-FPLT</i>
Z	<i>/STKPWHR-FPLT or /SAOE-FPLT or /SOE-FPLT or /SE-FPLT</i>

Punctuation

? (interrog)	/STPH
. (period)	/-FPLT
: (colon)	/-FPLT/-FPLT
; (semicolon)	/-FPLT/-RBGS
... (ellipses)	/-FPLT/-FPLT/-FPLT
, (comma)	/RBGS
- (dash)	/TK-RB
' (apostrophe)	/AE or /AOE
“ (double quote)	/KW-T or /KWOET
((left parenthesis)	/STPH-FPLT
) (right parenthesis)	/STPH-FPLT/STPH-FPLT
\$ (dollar sign)	/-D or /-D#
^ (caret)	/KA or /KAR
& (ampersand)	/APBD or /AFRP or /APL
* (asterisk)	/AS
+ (plus sign)	/P-LS
/ (slash)	/SHR-RB or /SHRARB
Space	/SPAEUS

Format Symbols

Question	/STKPWHR or /KWE or /KWEU
Answer	/-FRPBLGTS or /APB or /APBS
Colloquy	/KOL
Paragraph	/*P or /PAR or /PRAF or /PAUER
Delete Space	/TKEL or /TKHRET
Sticky Space	/KEP or /KAOEP
Tab	/TAB
New Line	/HRAOEUPB
Glue	/TKPWHRROU or /TKPWHRU
Cap Next	/KAP
Cap Previous	/PRE or /PRAOE
Uncap Next	/KA*P or KAUP

Numbers

1 /S-#

2 /T-#

3 /P-#

4 /H-#

5 /A-#

6 /-F#

7 /-P#

8 /-L#

9 /-T#

0 /O-#

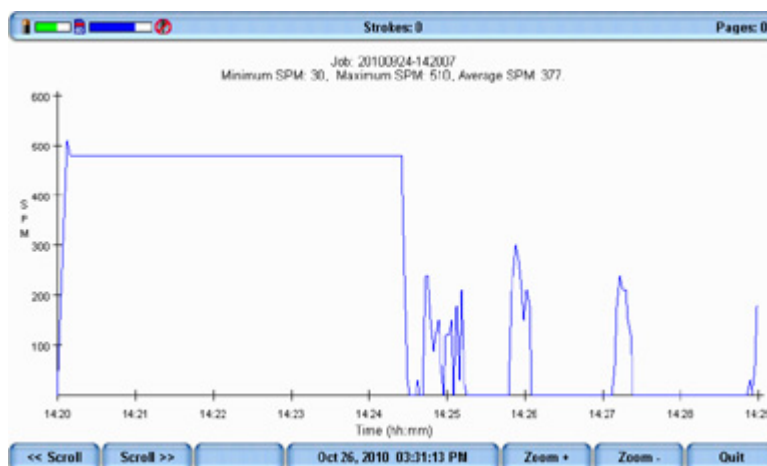
Job Statistics

Job statistics displays data for each job that includes the job size in bytes, the number of estimated pages, audio use, whether or not there is a job dictionary associated with the file and strokes per minute information. Strokes per minute, SPM, information displays on a separate screen in numeric and graphic format. The numeric information includes the minimum, maximum and average strokes per minute for the selected job. The graph shows the varying speed of strokes throughout the job. The strokes per minute graph is only visible in Job Statistics when the job is closed.

When the *Display Strokes Per Minute* option is active, the Title bar and Status screen display strokes per minute (SPM) data. While writing, the Title bar shows the approximate number of SPM and the Status screen shows SPM data for the current job. When no job is active, the Status screen shows strokes per minute data for the most recent job. See [Display Set Strokes Per Minute \(SPM\)](#) on page 58

View Job Statistics

1. From the Opening menu, press **More, Job Stats**.
2. Steno note folders display by year and month with the newest folder first. Use **Date Sort** to toggle folders between ascending and descending order.
3. Press the **Up** and **Down** buttons to move to the desired folder and press **Folder** to view job file data contained in the folder.
4. To view strokes per minute and the graph for a specific job, press the **Up** and **Down** buttons to move to the desired file and press **Select**. The Job Statistics graph displays.



5. Use the options as necessary:
 - **Scroll**—Use the Scroll buttons to move graph detail horizontally on the screen.
 - **Zoom**—Use the Zoom buttons to examine details of the graph in closer context or in a more distant overview.
6. Press **Quit** to return to the Second Setup screen.
7. Do one of the following:
 - View job statistics for another file, press **Job Stats**.
 - Return to the Opening menu, press **More**.

Keyboard Layout

Keyboard Layout is designed for international use of the Diamante. Changes to the Keyboard Layout should only be made when your steno keyboard layout uses a specific language steno theory.

1. From the Opening menu, press **Setup, More, Options**.
2. Press the **Up** and **Down** buttons as necessary to highlight the *Keyboard Layout* option.
3. Press the **Change** button to cycle through the available keyboard.
4. To display the Opening menu, press **OK, More, Quit**.

Keyboard Settings

The majority of Diamante users successfully adjust their keyboard accuracy using the depth of stroke and the tension control adjustment wheels. See [Keyboard Depth and Tension Controls](#) on page 24. Occasionally, when a very short depth of stroke is used or after adjusting the tension control and depth of stroke, you may continue to experience stacking or splitting. The Keyboard Settings allow you to further customize the keystroke interaction to your writing style.

You can save changed Keyboard Settings to a keyboard profile. You can load the saved profile at another time to quickly apply the settings. You may want to create different profiles for situations when your writing varies. For example, you are in a situation where several people are using the Diamante or you write differently first thing in the morning and late in the afternoon. You make adjustments to the Keyboard Settings and save them to a profile. The next time you write, you load the desired profile to have the Diamante automatically apply the saved Keyboard Settings with your personalized adjustments.

Keyboard Adjustments

1. Make adjustments to the keyboard depth of stroke and tension control settings. See [Keyboard Depth and Tension Controls](#) on page 24 for details.
2. Turn on CNN or the equivalent and write against the broadcast for 20 - 30 minutes.
3. If you continue to experience keystroke issues, make further adjustments using the Keyboard Options. From the Opening Menu, press **Setup, More, Keyboard, Adjust**. If you need to make adjustments during a job, press **More, Setup, Keyboard, Adjust**.
4. Perform the adjustments according to the following priority list to ensure optimal keystroke performance. Use the **Up/Down** buttons to highlight an option.
 - a. **Keyboard Sensitivity**—Adjust the overall keyboard sensitivity. This may be particularly necessary when your depth of stroke is very shallow. It is strongly recommended that you select the first available setting and assess the change. Turn on CNN or the equivalent and write against the broadcast for 20 - 30 minutes.

The default setting is Balanced. Use the + and - buttons to select one of the following:

- **Less Sensitive**—A key or keys show that you do not want in your steno outlines (shadowing).
 - **More Sensitive**—A key or keys you want are not in your steno outlines (missed or dropped).
- b. **Split/Stack Adjustment** - When you experience splitting steno outlines or multiple steno outlines becoming one, adjust the *Split/Stack Adjustment* setting. It is strongly recommended that you select the first available setting and assess the change. Turn on CNN or the equivalent and write against the broadcast for 20 - 30 minutes.

The default setting is Balanced. Use the + and - buttons to select one of the following:

- **Less Splitting 1**—Multiple steno outlines show in your steno notes that are intended to be one stroke.
- **Less Stacking 1**—Single steno outlines show in your steno notes that are intended to be two strokes.

- c. **Transition Time**—Transition time is the number of milliseconds that pass between the release of a key stroke and when the Diamante recognizes the next key stroke. This can affect the stacking or splitting of steno outlines. If you experience stacking or splitting steno outlines, adjust the *Split/Stack Adjustment* option first.

If the *Split/Stack Adjustment* settings do not resolve the splitting or stacking of steno outlines, set the *Split/Stack Adjustment* option to “Balanced” before changing the *Transition Time* setting. It is strongly recommended that you select a small increment and assess the change. Turn on CNN or the equivalent and write against the broadcast for 20 - 30 minutes.

The default setting is 8 milliseconds. Use the + and - buttons to choose a number between 2 and 66.

- **Increase the transition time setting**—Split steno outlines continue to show in your steno notes. Split steno outlines indicates that the transition time is too slow. Increase the transition time setting in small increments.
- **Lower the transition time setting**—Stacked steno outlines continue to show your steno notes. Stacked steno outlines indicates that the transition time is too fast. Decrease the transition time setting in small increments.

- d. **Return to Factory Default Settings**—Return all the keyboard options to the default factory settings. Use the + or - button to select **Yes**. If you made changes in *Adjust Keys*, you will not be prompted to save the settings as indicated in the next step.

5. Press **OK**. You are prompted to save the settings to a profile. While writing, you are prompted after you End the job. No prompting occurs if you selected to *Reset* all the key settings to the factory default.
6. Select one of the following:

Yes

Apply the settings and display the Keyboard Profiles screen. Do the following:

- a. Use the **Up/Down** buttons to highlight an empty profile or profile name and press **Save**.
- b. Type a profile name using uppercase and lowercase letter letters, punctuation and format symbols as defined in *Spell Mode* on page 64; or write steno defined in your dictionary as the word. The maximum number of characters is 32.
- c. Press **Accept**. See *Load a Profile* on page 73 to apply a saved Keyboard Profile. Press **Cancel** to return to the Keyboard Profiles screen without saving the profile.

No

Apply the settings, which are remembered until changed. They are not saved to a profile. To return to the Opening menu, press **Quit** twice.

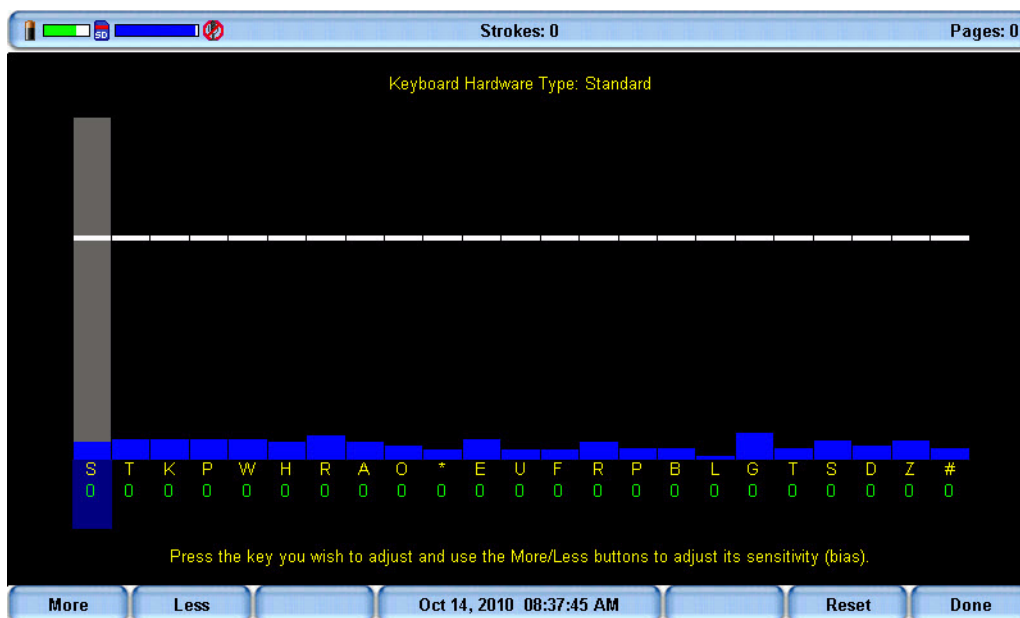
Individual Key Adjustments

Adjust an individual key when it consistently drags or drops. If you are experiencing multiple keys that drag or drop, first carefully follow all the steps in [Keyboard Adjustments](#) on page 70 before making individual key adjustments.

If you press three or more keys five consecutive times while making individual key adjustments, the Diamante automatically exits the screen. When you are in a job, you are returned to the realtime screen. Any adjustments made prior to the five consecutive strokes are remembered but you are not prompted at any time to save the changes to a profile.

To adjust an individual key:

1. Ensure the depth of stroke is customized to your writing style. See [Keyboard Depth and Tension Controls](#) on page 24 for details.
2. Access the Adjust Keys option. Do one of the following:
 - Before writing, press **Setup, More, Keyboard, Adjust, Adjust Keys**.
 - During a job, press **More, Setup, Keyboard, Adjust, Adjust Keys**.
3. The Keyboard Hardware Type screen displays.



Keyboard at rest with the deepest depth of stroke setting.

The line of white bars at the top of the screen represents the bottom of the keyboard. The horizontal position of the line varies depending on the depth of stroke setting. For example, a deeper depth of stroke places the line closer to the top of the screen. Each individual bar indicates the point the key must reach or move slightly past in order to register as a stroke. The number below each key is the current setting. Zero is the factory default.

4. Press the key you want to adjust with enough pressure to move it past the white bar and then release it. The gray vertical bar highlights the key selected for adjustment.

5. Perform one of the following adjustments:
 - **More**—Increase the key sensitivity when the key is not showing in the steno notes and you want it to register. Increase the sensitivity using increments of 5. It is strongly recommended that you make the first incremental setting and assess the change. Turn on CNN or the equivalent and write against the broadcast for 20 - 30 minutes.
 - **Less**—Decrease the key sensitivity when the key is showing in the steno notes and is not wanted. Decrease the sensitivity using increments of 5. It is strongly recommended that you make the first incremental setting and assess the change. Turn on CNN or the equivalent and write against the broadcast for 20 - 30 minutes.
 - **Reset**—Return all the key settings to the factory default.
6. When finished, press **Done**. You are prompted to save the settings to a profile. While writing, you are prompted after you End the job. No prompting occurs if you selected to *Reset* all the key settings to the factory default.

Keyboard Profiles

A keyboard profile is a group of Keyboard Settings saved to a file. When you load a saved Keyboard profile, the Diamante automatically applies the saved Keyboard Settings. You can have up to ten different profiles. See [Keyboard Adjustments](#) on page 70 and follow the steps to make changes to your Keyboard Settings and save them to a profile.

Load a Profile

1. Do one of the following:
 - Before writing, press **Setup, More, Keyboard, Profiles**.
 - During a job, press **More, Setup, Keyboard, Profiles**.
2. Use the **Up /Down** buttons to select a profile.
3. Press **Load**.
4. Do one of the following:
 - Before writing, press **Quit** twice.
 - During a job, continue writing.

Memory

The Diamante uses memory to store steno notes and timestamp files as additional backup to the Data SD and Backup SD cards. Steno note files stored in memory remain even when you turn the Diamante Off. You can save individual or multiple steno note files that are stored in memory to a Data SD card or thumb drive in the rare instance you need to retrieve a file.

There is 64 MB of memory on the Diamante or approximately 36,000 pages. If the memory becomes full, the Diamante overwrites the oldest files to make room for the newest files.

View and Copy Memory Files

The memory screen displays the list of files in a year, month, date and time format: 20090716-142341 (July 16, 2009 2:23:41 p.m.). By default, the newest file is listed first. The file size and the estimated number of transcript pages shows for each file.

Files in memory can be copied to the Data SD card or to a thumb drive. Files are automatically copied to the root directory of the destination drive. When copying to a thumb drive, be sure to insert your device before copying files.

Timestamp files are part of the steno note file. They are not visible in the list.

To view and copy memory files:

1. From the Opening menu, press **Storage, Memory**.
2. Steno note files display with the newest folder first. Use **Date Sort** to toggle files between ascending and descending order.
3. Press the **Up** and **Down** buttons to move to the desired file and press **Select**. You can select to copy any or all of the files in memory.
4. When finished selecting files, press **Copy**. The Diamante prompts you to copy to the Data SD card or a thumb drive. When copying to a thumb drive, ensure you insert the thumb drive into USB A (host) port before copying.
5. Press one of the following:
 - **Data Card**
 - **Thumb Drv**
6. Files are copied to the root of the storage destination.
7. The Opening menu displays.

Clear Memory

It is not necessary to clear the memory. If the memory becomes full, the Diamante overwrites the oldest files to make room for the newest files. It may be necessary, however, to clear the memory if you are working in a secure environment where you cannot remove your Diamante from the location with existing files.

The Clear Memory command does not clear the J-defines held in the dictionary within memory.

To clear memory:

1. From the Opening menu, press **More, Diag, Clear Mem.**
2. The Diamante prompts you with a confirmation message to delete all the files in memory.
3. Do one of the following:
 - Press **Yes** to clear all the files. When the Diamante completes clearing the memory files, press **OK** to return to the Opening menu.
 - To keep the current files, press **No**. To return to the Opening menu, press **Quit, More**.

New View

The New View feature allows you to change the Tilting screen view. The display cycles between steno only, text only, text with vertical notes and text with the Brief It pane. The message *Brief It (Disabled)* displays in the cycling view when Brief It is Off. You can change the Tilting screen view any time while writing a job.

To change the Tilting screen view:

1. From the First Writing menu, press **More, New View**.
2. Press **New View** until the desired selection displays.
3. Continue writing.

Options

Options allow you to switch the USB communication between Standard and élan Mira[®] emulation, select keyboard layout language, adjust Beeper Volume, view strokes per minute job statistics, select a prompt when ending a job and change the save setting for TrueStroke files.

To access Options:

1. From the Opening Menu, press **Setup, More, Options**.
2. For details about each option, see the appropriate topic in this chapter:
 - “Beeper Volume”
 - “Display Strokes Per Minute (SPM)”
 - “Keyboard Layout”
 - “Prompt to End a Job”
 - “Serial Protocol”
 - “TrueStroke”
 - “USB Communication”

Prompt to End a Job Option

The Diamante can optionally prompt you with a confirmation message each time you press the End button to close a job. When the message displays, you can continue to close the job by selecting End again. Pressing Cancel or continuing to write cancels the message and the job remains open.

To set the end job confirmation prompt option:

1. From the Opening menu, press **Setup, More, Options**.
2. Press the **Up** and **Down** buttons as necessary to highlight the *Prompt to end job* option.
3. Press the **Change** button to toggle the option between Yes and No. No is the default.
4. To display the Opening menu, press **OK, More, Quit**.

Reopen

Using the Reopen feature, you can open an existing file for searching and readback purposes. You can search, scroll and playback audio in a reopened file.

The Diamante stores files for reopen on the Data SD card. It is necessary to have the Data SD card in the Diamante in order to reopen files. When you resume writing, the new text is appended to the reopened file and is a single file on the Data SD card. New text shows on the screen following the heading, Reopened Section. The Diamante creates a new Reopened Section each time you reopen a file. J-Defines created in the reopened file apply only to the appended portion and are the only J-Defines stored with the file. J-Define created during previously reopened sections are available by saving all J-Defines to the J-Defines.job dictionary.

You can only reopen a job with audio when you reopen it on the same day it was created. For example, you write a job in the morning and record audio. When you break for lunch, you end the file. You can only reopen and append to the job later the same day. If a job selected for reopen has audio and your options are currently set to not record audio, you can only open and append to the job by changing your audio settings to record audio. If the job selected for reopen does not have audio and your options are currently set to record audio, you can only open and append to the job by changing your audio setting to not record audio.

The original and appended steno notes, timestamps, audio and all new J-Defines are stored in the same file on the Data SD card. The original and appended files are saved in separate files in memory and on the Backup SD card.

To reopen and append a file:

1. From the Opening menu, press **Reopen**.
2. Job files are organized into folders by year and month, with the newest folder first. Press the **Up** and **Down** buttons to highlight to the desired folder. Use **Date Sort** to toggle folders between ascending and descending order.
3. Press **Folder** to display the job files for the selected folder.

Job files display in date order, newest files first, with the following subfile information: the file size in megabytes, the estimated number of transcript pages, an indicator when there is an associated Audio file and an indicator when there is an associated job dictionary.

4. Press the **Up** and **Down** buttons to highlight the desired file for reopen.
5. Press **Open**. The Diamante loads the file. The new translation displays on the Tilting screen under the *Reopened Section*.
6. Write a stroke on the writer. Once you write a steno outline, you can play back any audio from the current or reopened file.

Scroll

Using the Scroll function, you can review testimony by moving up or down the Tilting screen one line at a time. When you resume writing, the Diamante returns to the current spot in the testimony.

1. From the First Writing menu, press **More, Scroll**.
2. Use any of the following menu options:
 - **New View**—change the view on the Tilting screen.
 - **Play**—playback the audio.
 - **Up**—move to a previous line.
 - **Down**—move to the following line.
3. To exit the Scroll menu, continue writing or press **Quit**.

Search

The Diamante allows you to search and scroll through a job using information from the Data SD card. Ensure the Data SD card is inserted into the Data SD slot on the Diamante to effectively use search.

When you select to search for an item, the Diamante highlights the located item on the screen. You can search for the last question, answer, untranslate or electronic Mark. You can also search for one or more specific steno strokes.

Search for the Last Question

1. From the First Writing menu, press **Last Q**. The Diamante highlights the last Q. If a question is not found or you reach the beginning of the file, the search stops with the cursor positioned at the top of the file.

Use any of the following menu options:

- **New View**—change the view on the Tilting screen.
- **Play**—playback the audio.
- **Prev. Q**—search backward in the file for previous question.
- **Up**—scroll backward in the file.
- **Down**—scroll forward in the file.

2. Continue writing or press **Quit**. The First Writing menu and your current writing position display.

Search for the Last Answer

1. From the First Writing menu, press **More, Search, Last A**. The Diamante highlights the last A. If an answer is not found or you reach the beginning of the file, the search stops with the cursor positioned at the top of the file.

Use any of the following menu options:

- **New View**—change the view on the Tilting screen.
- **Play**—playback the audio.
- **Prev. A**—search backward in the file for the previous answer.
- **Up**—scroll backward in the file.
- **Down**—scroll forward in the file.

2. Continue writing or press **Quit**. The First Writing menu and your current writing position displays.

Search for the Last Mark

An undefined electronic Mark displays as ! in the Vertical Notes on the Tilting screen.

1. From the First Writing menu, press **More, Search, Last Mark**. If the Mark is not found or you reach the beginning of the file, the search stops with the cursor positioned at the beginning of the file.

Use any of the following menu options:

- **New View**—change the view on the Tilting screen.
 - **Play**—playback the audio.
 - **Previous**—search backward in the file for the previous electronic Mark.
 - **Up**—scroll backward in the file.
 - **Down**—scroll forward in the file.
2. Continue writing or press **Quit**. The First Writing menu and your current writing position display.

Search for Steno Strokes

1. From the First Writing menu, press **More, Search, Steno**. The *Enter Steno To Search For* field displays.
2. Write the steno strokes on which to search. If you make a mistake, press **Clear** and write the new strokes.
3. Press **OK**. The Diamante highlights the text for the steno outlines. If the steno outlines are not found or you reach the beginning of the file, the search stops with the cursor positioned at the top of the file.

Use any of the following menu options:

- **New View**—change the view on the Tilting screen.
 - **Play**—playback the audio.
 - **Previous**—search backward in the file for the previous occurrence of the steno outlines.
 - **Up**—scroll backward in the file.
 - **Down**—scroll forward in the file.
4. Continue writing or press **Quit**. The First Writing menu and your current writing position displays.

Search for the Last Untranslate

Searching for the last untranslate can be an easy way to identify the steno for a J-Define.

1. From the First Writing menu, press **More, Search, Untranslate**. The Diamante highlights the last untranslate. If an untranslate is not found or you reach the beginning of the file, the search stops with the cursor positioned at the top of the file.

Use any of the following menu options:

- **New View**—change the view on the Tilting screen.
 - **Play**—playback the audio.
 - **Previous**—search backward in the file for the previous untranslate.
 - **Up**—scroll backward in the file.
 - **Down**—scroll forward in the file.
2. Continue writing or press **Quit**. The First Writing menu and your current writing position displays.

Serial Protocol

The Serial Protocol option is a fixed option that displays the Diamante communication protocol when using the Virtual Serial Port driver provided by Stenograph. Select Stentura as the writer in your CAT system if you are using the serial protocol with a CAT system not compatible with the Diamante USB protocol.

Status

Status displays information about the Diamante. The status screen indicates:

- Software version.
- When a job is opened, the name of the job.
- The approximate number of strokes per minute including the minimum, maximum and average for the job along with a graphical representation of the varying number of strokes per minute throughout the job.
- The total number of strokes to date for all jobs taken.
- Keyboard type and Serial Protocol.
- The amount of space left on the Data SD card and whether or not the card is write enabled.
- When the AC adapter/charger is charging.
- The Bluetooth target computer numeric ID, computer name and the Passkey, when applicable.
- Main Battery status. See [Batteries](#) on page 14 for more information.

Check Status Information

To check status information:

1. From the Opening or First Writing menu, press **More, Status**.
2. To return to the initial menu, Opening or First Writing menu, press **OK, More**.

Steno Test

The Steno Test feature puts the Diamante in writing mode and simulates steno strokes for diagnostic purposes. This feature is generally used at the request of a Stenograph Technical Support Representative to test the Read and Writing features of the Diamante.

To activate Steno Test:

1. From the Opening menu, press **More, Diag, Steno Test**.
2. Writing any steno stroke exits the Steno Test mode but keeps the file open. To close the file, press **End**.

If the option, *Prompt to confirm ending job* is active, a confirmation prompt displays. Press **End** to close the job or continue writing to cancel the message.

Suffix Handling

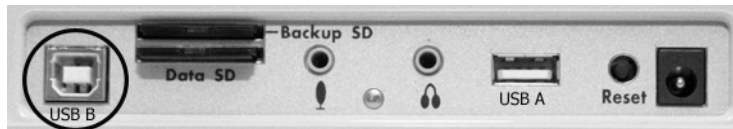
The Suffix Handling feature attaches properly defined suffixes to the previous word. This provides for easier readback on the Diamante screen when using suffixes.

If you have exported your Case CATalyst Spell Check Wordlist and Prefixsuffixrules.ini file, the suffix handling feature attaches the suffix to the previous word and spell checks it against the wordlist and prefixsuffixrules file. You need Case CATalyst v8.05 or higher to export the wordlist and prefixsuffixrules file.

To export the Case CATalyst Spell Check Wordlist and the Prefixsuffixrules.ini files, you must have installed the Diamante USB driver on your computer. See [Install the Diamante USB Drivers](#) on page 18 for instructions on loading the driver.

To export the files:

1. Ensure your Diamante and computer are turned **On** and fully booted.
2. Start Case CATalyst.
3. Connect your Diamante to your computer via USB cable. Each end of the USB cable has a different connection plug. Connect the appropriate end of the USB cable to the USB B (client) port on back of the Diamante and the other end to the USB port on the computer.



Diamante Back Port Panel

4. In Case CATalyst, select **Export**.
5. From the Export dialog box, select the **élan/Fusion/Diamante** tab. In Case CATalyst V10.04 or earlier, select the **élan/Fusion** tab.
6. Check the box, **Export Spell Check Wordlist**.

If applicable, check the box **Export Prefixsuffixrules.ini File**. When the Export to Prefixsuffixrules.ini File option is grayed out, there is no Prefixsuffixrules.ini file in your System Files Case indicating you do not use it. A Prefixsuffixrules.ini file is not necessary to use the Suffix Handling feature.

Case CATalyst remembers the status of these checkboxes.

7. Select any dictionaries to export. The Personal Dictionary is automatically selected.
8. Select **Export**. The Diamante beeps and briefly displays a progress bar.
9. When the Diamante finishes loading the selected files, it reboots, displaying the Opening menu. Depending on your Case CATalyst settings, the message, *Export Complete* displays.
10. Remove the USB cable.

Test Mode

Test Mode is designed for situations where you are taking a test or writing in a secure location that restricts you from leaving the environment with any copy of the proceedings. In Test Mode, the Diamante writes only to the Data SD card, regardless of your settings. In Test Mode, no files are written to memory or the Backup SD card and all audio recording features are disabled.

To turn Test Mode On or Off:

1. From the Opening Menu, press **Setup, More, Test Mode**. The current status of Test Mode displays on the screen.
2. Do **one** of the following:
 - Press **On** to use Test Mode. The Status and Menu bars display in red. The Diamante remains in Test Mode until you turn the feature Off or turn the Diamante Off.
 - Press **Off** to disable Test Mode. The Status and Menu bars return to the normal blue display color.
3. To display the Opening menu, press **OK, More, Quit**.

Thumb Drive

If you have a thumb drive plugged into the USB A (host) port on the back of the Diamante, you can view files on the thumb drive.



You can copy files from the Data SD card and the Diamante memory to a thumb drive. See [View and Copy Data SD Card Files](#) on page 53 and [View and Copy Memory Files](#) on page 74 to copy files.

To view the contents of a thumb drive:

1. Insert the thumb drive into the USB A (host) port on the back of the Diamante.
2. From the Opening Menu, press **Storage, Thumb**.
3. Do either of the following:
 - To view information about the Thumb drive, press **Information**.
 - To view the contents of the Thumb drive, press **Files**.

Tilting Screen Appearance

You can adjust the text color, font size and backlight level from the Opening Menu or while writing a job.

Set Tilting Screen Text Colors

The Diamante Tilting screen can display text in several different colors. You can set separate colors for untranslates, question symbol, answer symbol, text, and conflicts.

To change the Tilting screen text colors:

1. Do one of the following:
 - From the Opening menu, press **Setup, Display**.
 - From the First Writing menu, press **More, Setup, Display**.
2. From the Display menu, select **Color**. The Color menu displays sample text showing the current color assignment for each text type.
3. Move the pointer (>>) using the **Up** and **Down** buttons to the item you want to change.
4. Cycle through the available colors using the **▲ Color** and **▼ Color** buttons. The item displays in the selected color under the New Color Assignment column. Some colors are less noticeable due to their subtle differences.
5. Repeat steps 3 and 4 to change the color for other items.
6. When finished selecting colors, press **Accept**. To exit the Color screen without changing the color, press **Quit**.
7. The Display menu reappears. The color selection remains until you change them.
8. Do one of the following:
 - When changing colors before beginning a job, return to the Opening Menu by pressing **OK, More, Quit**.
 - When changing colors while writing, continue writing. The First Writing menu redisplay.

Select Tilting Screen Font Size

The Diamante can display text in five different font sizes. Using a smaller font allows you to display more text on the Tilting screen and using a larger font allows for easier viewing. The default font size setting is #3.

To change the Tilting screen font size:

1. Do one of the following:
 - From the Opening menu, press **Setup, Display**.
 - From the First Writing menu, press **More, Setup, Display**.
2. On the Display menu, press **Font**.
3. Move the pointer (>>) using the **Font▲** and **Font▼** buttons to select **one** of the font sizes.

4. When finished with your selection, press **Quit**. The Display menu reappears. The selected font size remains until changed.
5. Do one of the following:
 - When changing font size before writing a job, return to the Opening Menu by pressing **OK, More, Quit**.
 - When changing font size while writing, continue writing. The First Writing menu redisplay.

Set the Tilting Screen Backlight Level

Adjust the brightness of the Backlight on the Tilting screen to accommodate your viewing preference. Decreasing the brightness reduces the amount of the power required to display the screen which can reduce battery consumption. Optionally, setting the Backlight to automatically dim after a period of inactivity also reduces battery consumption. Dimming options allow you to customize automatic dimming when selected.

To customize the Tilting screen Backlight levels:

1. Do one of the following:
 - From the Opening menu, press **Setup, Display, Backlight**.
 - From the First Writing menu, press **More, Setup, Display, Backlight**.
2. Press the **Up** and **Down** buttons to highlight an option. Use the **+** and **-** buttons to make changes.
 - *Backlight Bright Level*—Increase or decrease the Backlight level. The brightness is based on a percentage. 100% is the default. The screen reflects your selection.
 - *Backlight Dim Level*—Set the Backlight dimming level when the *Auto Dim After* option is active. The brightness level is based on a percentage. The screen reflects your selection.
 - *Auto Dim After*—Select the period of inactivity that must pass on the Diamante before Backlight dimming occurs. Choose a number between **1-90** seconds or **Never**.
 - *Auto Bright When*—select the action that must be taken to resume regular Backlight brightness after dimming. Choose **Steno** or **Function Key**.
3. When finished with your selections, press **OK**. The Display menu reappears.
4. Do one of the following:
 - With no open job, return to the Opening Menu by pressing **OK, More, Quit**.
 - During a job, continue writing. The First Writing menu redisplay.

Time and Date

The Time function allows you to change the time and date on your Diamante. It is important to maintain date and time accuracy in the event you need to locate a file in memory, on the Data SD card or on the Backup SD card.

1. From the Opening menu, press **Setup, Time**. The Time and Date screen displays.
2. Press the **Next** button to select the unit of time or date you want to change.
 - Month
 - Day
 - Year
 - Hour
 - Minutes
 - AM/PM
3. Do **one** of the following:
 - To increase the unit of time or date, press **+**.
 - To decrease the unit of time or date, press **-**.
4. Repeat the previous steps for each unit of time or date you want to change.
5. To apply your selection, press **Accept**.
6. To display the Opening menu, press **Quit, More, Quit**.

Translate Options

The Diamante has five translate options, A/An, Auto-Conflict and three Brief It. Using the Trans. Opt. menu, you can turn these options On and Off. See [A/An Resolution](#) on page 39, [Auto-Conflict Resolution](#) on page 43 and [Brief It](#) on page 47 for details about each option.

To access Translate Options:

1. From the Opening Menu, press **Setup, Trans. Opt.**

TrueStroke

TrueStroke technology is a sophisticated algorithm that tracks the direction and velocity of keystrokes. By default, the Diamante writes TrueStroke data, the.sgxr2 subfile, to the Data SD card along with the steno note file. When you read the steno note file into Case CATalyst 10.07 or higher, the TrueStroke data is automatically copied to the job subfile, Steno X-ray2. When writing realtime via USB cable to Case CATalyst Version 10.07 or higher, the TrueStroke data is written to Data SD card and the Case CATalyst version 10.07 or higher realtime job subfile, Steno X-ray2.

To view TrueStroke information in Case CATalyst, display the vertical notes for the realtime job and double click the steno outline for the TrueStroke data you want to view. See the *Case CATalyst Help* more information about TrueStroke data. The free, downloadable TrueView[®] utility allows Case CATalyst V10.06 or earlier and other CAT software users to view the TrueStroke data.

To change the TrueStroke setting:

1. From the Opening Menu, press **Setup, More, Options**.
2. Use the **Up/Down** buttons to highlight the *Save TrueStroke Files to Data SD card* field.
3. Press **Change** to select Yes or No.
4. To display the Opening menu, press **OK, More, Quit**.

USB Communication

The Diamante uses the same realtime USB protocol as the élan Mira®; however, some CAT systems look specifically for the writer model instead of the USB protocol. The USB Communication option allows you to switch the USB protocol from Standard to élan Mira, enabling you to connect your CAT system to the Diamante via USB cable for realtime communication.

The USB Communication option only affects realtime communication via USB. Virtual USB serial port communication is not available. It does not affect exporting an RTF/CRE dictionary to the Diamante via USB cable.

To change the USB Communications option:

1. From the Opening Menu, press **Setup, More, Options**.
2. Use the **Up/Down** buttons to highlight the *USB Communication (Writer will Reset if Changed)*: field.
3. Press **Change** to switch to Mira Emulation or Standard. Standard is the default selection. A USB Communication message displays indicating that changing the setting requires the writer to restart.
4. Do one of following:
 - Press **Accept** to change the setting. The Diamante automatically resets and displays the Opening menu.
 - Press **Cancel** to retain the current setting and return to the Options screen.

Wireless

Stenograph provides two optional wireless communication choices for realtime writing. Wireless communication is available using a WiFi wireless connection or Bluetooth Technology.

WiFi Wireless Communication

The Stenograph optional Diamante WiFi hardware component and router kit allows realtime communication between Case CATalyst and the Diamante when using Diamante version 1.12 or higher, and Case CATalyst version 8.05 or higher. The ability to export Case CATalyst dictionaries to the Diamante and the option to send TrueStroke Data via WiFi are available features when using Diamante version 1.13 or higher and Case CATalyst version 12.50 or higher. All Diamante WiFi wireless features require that Case CATalyst is loaded on a computer with Windows® 7/Windows Vista®/Windows XP. Your computer must be wireless enabled or have a network interface card (NIC). See the *Diamante WiFi Wireless Communications Guide* included on the Diamante®/Wave™ Utilities and Tutorial CD for information about Diamante WiFi wireless setup, configuration and use. You can also download the guide from the Utilities and Links download page at www.stenograph.com.

Stenograph provides WiFi wireless support only when you are using the Diamante WiFi router kit. Other WiFi routers may work but are not supported by Stenograph.

Bluetooth Wireless Communication

Bluetooth wireless communication is available for the Diamante. The Stenograph optional Diamante Bluetooth wireless realtime kit allows wireless communication between the Diamante and Case CATalyst or a Windows based 32-bit or 64-bit CAT system on your Windows® 7/Windows Vista®/Windows XP notebook computer. The kit includes the necessary Diamante Bluetooth adapter and the Bluetooth software, drivers and adapter for your computer. See the *Diamante Bluetooth Wireless Communication* guide included in the kit for information on Bluetooth wireless communication set up, configuration and use.

Stenograph provides Diamante wireless support when the Diamante Bluetooth Wireless Communication kit is used. Other wireless adapters and software may work but are not supported by Stenograph.

Troubleshooting

Chapter 4, *Troubleshooting*, suggests possible solutions to some common situations encountered when using the Diamante. Most users can remedy the following situations themselves. For more troubleshooting information, check Stenograph's web site, www.stenograph.com. If a problem persists, call Stenograph Technical Support at **1.800.323.4247** or **1.630.532.5100**.

Troubleshooting Tips

The following troubleshooting tips can assist you in quickly solving some common errors you may encounter. Additional Help topics are available at www.stenograph.com. Click **Support, Help Desk**.

Audio - Does Not Resume After Pause

If you wrote a steno outline to pause the audio, you must stroke a steno outline to resume audio, regardless of the setting for the Auto Pause Resume option.

Audio - Feedback or "Squealing"

If audio feedback or "squealing" noises occur, check the following:

- If you are using a powered microphone, set the *Microphone Gain* lower. See [Audio Options](#) on page 40 for more information.
- The microphone may be located too close to the speakers or headphones. Move the microphone further from the speakers or headphones.
- The playback volume setting may be set too high. Try a lower playback setting.

Backup/Data SD Card - Write Protected

SD cards have a write protect slide on the side card. If the slide is moved to the *Locked* position, no data can be written to the card. When a *Locked Data* SD card is inserted into the Diamante, a message displays indicating the card is write protected. No writing can occur until you unlock the Backup SD card.

To enable writing on an SD card:

Remove the appropriate SD card from the Diamante. The Backup SD card is recessed.

1. Hold the SD card with the notched side up.



2. Move the write protect slide to the **Up** position.
3. Reinsert the SD card into the Diamante.

Backup SD Card - Error Message

The error message, *No Files were found in x:\???Backup.BIN*, displays when attempting to retrieve a file from the Backup SD card using the BackupCard Utility. The x in the above message represents the actual drive letter assigned to the SD card reader.

- It is necessary to read the Backup SD card using the USB SD Flash Drive reader that came with your Diamante or another reliable USB based external SD card reader. A built-in SD card slot reader on your computer cannot read the Backup SD card.
- Windows 7 and Windows Vista require the BackupCard Utility to run as Administrator. See [Utility - Run BackupCard Utility as Administrator](#) on page 100.

Backup SD Card - No Files

To be able to read Diamante files on the Backup SD card, you must be using Case CATalyst version 10.06 or higher; and use the BackupCard Utility. See [Backup SD Card Reader](#) on page 113.

Data SD Card - No Files

To be able to read Diamante files on the Data SD card, you must be using Case CATalyst version 7.02 or higher. If you are not using Case CATalyst version 7.02 or higher, or are using another CAT system, use the DateTimeToStentura utility program. See [Convert Date/Time to Stentura Format](#) on page 108.

Dictionary - Encountered Problem Reading Dictionary

The message, "Encountered problems reading dictionary(s) Please retry exporting/loading dictionary(s)." displays when the Diamante cannot validate a dictionary being loaded. It also displays when a valid dictionary is not found on the Diamante.

If you experience this message while loading dictionaries:

1. Review the dictionaries selected for export from Case CATalyst, if applicable, and try reloading the dictionaries into the Diamante.
2. Review the dictionary on your CAT system and then export it to RTF/CRE. Use the Rtf2Writer Dictionary Conversion utility to load the dictionary onto the Diamante.
3. If this message displays when you are not loading dictionaries:
 - a. Verify that dictionaries are currently loaded on your Diamante.
 - b. Reload the necessary dictionaries.

Reset - Diamante Appears Unresponsive

If the Diamante appears to be unresponsive, press the **Reset** button on the back of the Diamante. If you have an open file at the time you press the Reset button, the current file closes. The Diamante reboots and a recovery complete message displays. Press **OK** and continue writing. The previously opened file displays.

TrueView Error Messages

TrueView troubleshooting solutions are located in the *Diamante Utilities* appendix.

USB - Cannot Update Software

- A file cannot be opened while updating software. Close the open file on the Diamante.
- To load a Diamante software update, you must first install the Diamante USB driver on your computer. The Diamante USB driver, on the Diamante®/Wave™ Utilities and Tutorial CD, comes with your Diamante. See [Install the Diamante USB Drivers](#) on page 18 to load the Diamante USB driver.

USB - Realtime Connection Appears Unresponsive

If you leave the USB realtime connection active when you take a break, the realtime screen on the CAT system may not display the new steno strokes when you resume writing. This is a function of the computer USB port power management settings when it remains idle for a period of time.

Power management settings determine if the USB ports turn off when not in use for a specified amount of time. When using the virtual serial port communications via a USB cable, it is important to check the power management settings for your computer USB Root Hubs to ensure the USB port does not turn off when idle.

Regardless of the power management settings, virtual serial port communications via USB cable does not allow you to disconnect and reconnect the USB cable and maintain the realtime connection. For example, you disconnect from the virtual serial port connection to report a bench conference and then reconnect when finished.

To modify the USB power management settings, complete the following instructions appropriate for your operating system. For additional information, check Stenograph's Help Desk or consult your Windows documentation about Device Manager.

Windows 7

1. Click the Start menu on your computer and in the *Search programs and files* text field, type: **power settings**.
2. A list displays. Under the *Control Panel* section, click **Change battery settings**.
3. Power Options for your computer display in a dialog box.
4. On your currently selected power plan, click **Change plan settings**.
5. The Edit power settings dialog box displays. Click **Change advanced power settings**.
6. The Power Options Advanced tab displays. Click the plus sign, **+**, next to *USB settings*.
7. Click the plus sign, **+**, next to *USB selective suspend settings*.
8. Do the following:
 - Click **On Battery** and from the drop down list select, **Disable**.
 - Click **Plugged In** and from the drop down list select **Disable**.
9. Click **Apply** to save the changes.
10. Click **OK** and then close the Edit power settings dialog box.

Windows Vista & Windows XP

1. On your computer, from the Start menu right click on **Computer** or **My Computer**.
2. Select **Properties**.
3. Depending on your operating system, do one of the following:
 - In Windows Vista, select **Device Manager**. If the UAC dialog box displays, click **Continue**.
 - In Windows XP, select the **Hardware** tab and then select **Device Manager**.
4. Scroll down to **Universal Serial Bus Controllers** and click the plus mark on the left.
5. Right click the first **USB Root Hub** listed and select **Properties**.
6. Click the **Power Management** tab.
7. Verify the option, *Allow the computer to turn off this device to save power* is unchecked and click **OK**.
8. Repeat the previous step for each USB Root Hub in the list, verifying the option is unchecked.
9. When finished, close the Device Manager.

USB - Unknown Device Message on Computer

1. Make sure the USB driver is loaded on the computer. See [Install the Diamante USB Drivers](#) on page 18 for more information.
2. Make sure the Diamante is turned On before attaching the USB cable to the Diamante and the computer.

Utility - Run BackupCard Utility as Administrator

To run the BackupCard Utility as an Administrator on Windows 7 and Windows Vista, change the Compatibility properties for the program:

1. Right click the **BackupCard.exe** shortcut and select **Properties** in the drop down menu. The BackupCard.exe Properties dialog box displays.
2. Select the **Compatibility** tab.
3. Under Privilege Level, check the option, *Run this program as an administrator*.
4. Click **OK** to apply the change close the BackupCard.exe Properties dialog box.

Diamante Technical Support

If you encounter a problem you cannot solve, a Diamante Support Specialist is available to assist you at:

1.800.323.4247 or 1.630.532.5100, touch 2, then 2
8:00 a.m. to 6:00 p.m. (CT) Monday through Friday,
Excluding Stenograph Holidays

To assist the Specialist, have the Diamante with you, know your customer number and know your Diamante serial number. The serial number is located on the bottom of the writing machine. Be prepared to describe your question or problem in detail.

Wireless Communication

Stenograph provides WiFi wireless support only when you are using the Diamante WiFi Router kit. Other WiFi routers may work but are not supported by Stenograph.

Stenograph provides Bluetooth wireless support when you are using the Diamante Bluetooth Wireless Communication kit. Other wireless adapters and software may work but are not supported by Stenograph.

Accessories

Accessory items for your Diamante are available from the Stenograph web site. Visit www.stenograph.com.

Updating Diamante Software

Appendix A, *Updating Diamante Software*, explains how to update your Diamante. You must have an active Internet connection and know your customer number and Diamante serial number in order to perform the update. The Diamante serial number is located on the bottom of the writing machine?

Once you download the software update onto your computer, you update the Diamante via a USB cable. You must have the Diamante USB driver installed on your computer to load the update. The Diamante USB driver, located on the Diamante®/Wave™ Utilities and Tutorial CD comes with your Diamante. See [Install the Diamante USB Drivers](#) on page 18 if you need to load the Diamante USB driver.

To update Diamante software:

1. Download the update to your computer. Connect to the Stenograph web site, www.stenograph.com, and navigate to **Support/ Downloads**.
2. Select **Diamante & Wave**.
3. Right click on the selected update file to download and choose **Save Target As**. The Save As dialog box displays.

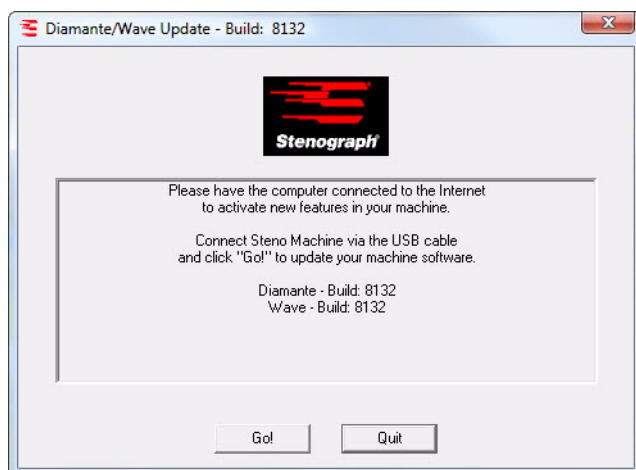
The File name field displays the name of the selected file to download. Do not alter this name.

4. Select a location on your computer where you want to place the download file and select **Save**. Stenograph recommends saving the file to your Desktop.

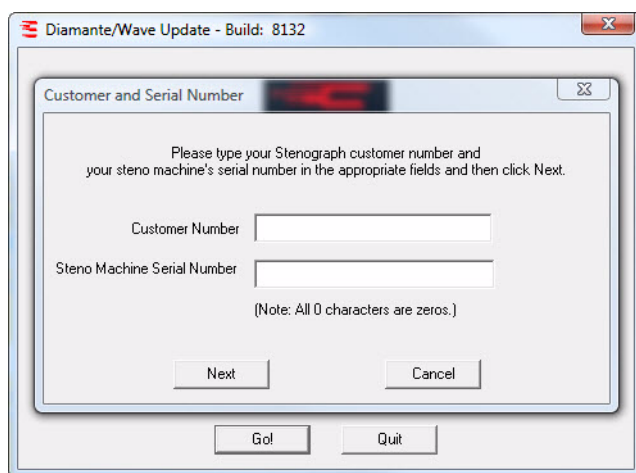
The File Download dialog box displays until the download completes copying files to your computer.

5. When the download is complete, the file displays on your Desktop, if the Desktop was selected for the download location.
6. Load the update onto your Diamante. Ensure your Diamante and computer are turned **On**.
7. Each end of the USB cable has a different connection plug. Connect the appropriate end of the USB cable to the USB B (client) port on the back of the Diamante and the other end to a USB port on the computer.
8. Navigate to the location on your computer where you downloaded the Diamante update file. An active Internet connection is necessary to complete the update.

9. Double click the DiamanteWave update file. The Diamante/Wave Update dialog box displays.



10. Click **Go!**. The screen briefly displays a message indicating the updated software build is being sent to the Diamante. The Customer and Serial Number screen displays.



11. Type your customer number and your Diamante serial number in the appropriate fields and click **Next**. Your computer briefly displays the message, "Updating Options File..." The Diamante beeps twice and then displays the message: *Programming Flash*.

If the customer number or serial number does not match or the update is incomplete, an error message displays. Click **OK** and follow the instructions in the error message. If the problem persists, contact [Diamante Technical Support](#). See page 101.

12. When the update is complete, the Diamante reboots and displays the Opening menu. Your computer displays the message: *Successfully Updated the Diamante*. Click **OK to Exit**.
13. Click **OK** and in the Diamante/Wave Update dialog box on your computer, click **Quit**. You can delete the update file.

Diamante Utilities

Appendix B, *Diamante Utilities*, provides instruction on how to:

- personalize the splash screen with a photograph.
- convert Stenograph writer files from Date and Time format to Stentura compatible format (File.00X).
- convert Rich Text Format/Court Reporting Extensions (RTF/CRE) dictionaries into Diamante format.
- use the Backup Card Reader to retrieve a file from the Backup SD card.
- use TrueView to view TrueStroke™ data generated by the Diamante.

Performing utility functions requires the Diamante®/Wave™ Utilities and Tutorial CD that came with your Diamante. Stenograph recommends that you create a Stenograph Utility folder on your Desktop and copy the utilities to that folder.

Windows 7 & Windows Vista

When copying or running a Diamante Utility, the User Account Control message box may display. The User Account Control (UAC) is a security feature prompting you for permission to run the displayed program name or service being accessed. To use the Diamante utilities, you must choose **Continue** in the UAC message box. The User Account Control is an important feature of Windows 7 and Windows Vista. Stenograph **does not** recommend disabling it.

Personalize the Diamante Splash Screen

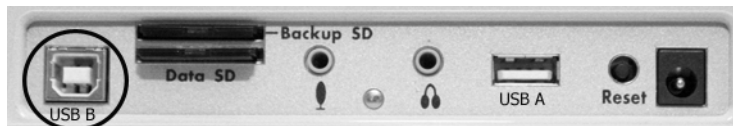
The Splash Screen Loader Utility allows you to personalize the Diamante startup screen with a photograph of your choice. The photograph displays briefly when turning your Diamante On.

The photograph you load can be located on the computer hard drive or removable media. It must be in JPEG (.JPG) format. A limited amount of stock photos are available on the Diamante®/Wave™ Utilities and Tutorial CD in the Diamante Splash Photos folder.

You must have the Diamante USB driver installed on your computer to use the USB cable. See [Install the Diamante USB Drivers](#) on page 18 if you need to load the Diamante USB driver.

To personalize the splash screen:

1. Turn your computer **On**. Ensure that it is fully booted.
2. Insert the Diamante®/Wave™ Utilities and Tutorial CD into the CD-ROM/DVD drive on your computer. If the AutoPlay dialog box displays, click **Run autorun.exe**.
3. The Diamante - Wave Utility dialog box displays. Click **Diamante Utilities, User Guide and more**.
4. The Diamante Utility dialog box displays. Click **Utilities, Slash screen and more**.
5. Open the **Utilities** folder.
6. Copy the **Splashloader.exe** file to the Desktop on your computer. If you created a Stenograph Utility folder on your Desktop, copy the utility to that folder.
7. Turn your Diamante **On**.
8. Connect the appropriate end of the USB cable to the USB B (client) port on the Diamante and the other end to a USB port on your computer.



Diamante Back Port Panel

9. Double click the **Splashloader.exe** icon on your Desktop. The Diamante Splash Screen Loader dialog box displays.



10. To select a photograph, click the **Browse** button to navigate to the location of the desired picture. Highlight the picture and click **OK**.
11. The path and file name of the selected picture displays in the Diamante Splash Screen Loader dialog box.



12. Click **Load** to send the picture to your Diamante.
13. When the picture successfully loads, the Success dialog box displays. Click **OK**.
14. Click **Quit** to close the Splash Screen program.
15. To view your selected picture on the Diamante, turn Off the writing machine and turn it back On. The startup screen displays the picture. To load a different picture, double click the **Splashloader.exe** icon and repeat the picture selection steps.

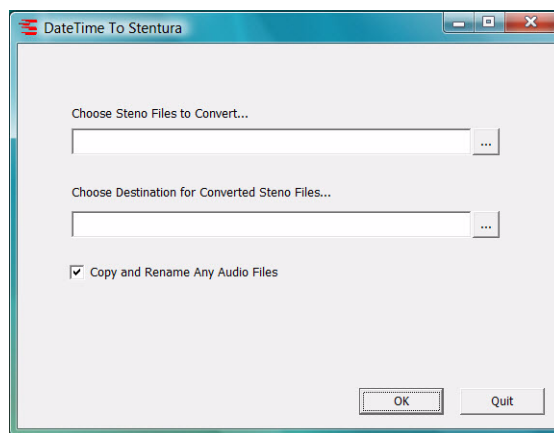
Convert Date/Time to Stentura Format

The DateTimeToStentura Utility program converts Diamante Date/Time formatted files (20090710-084528) to Stentura compatible format (File.00X); and optionally copies the associated audio, when audio is available.

CAT software not compatible with Date/Time format or Case CATalyst lower than V7.02 require conversion to the Stentura compatible file format in order to read the files. All popular CAT systems read Stentura compatible formatted steno files.

To convert files:

1. Turn your computer **On**. Ensure that it is fully booted.
2. Insert the Diamante®/Wave™ Utilities and Tutorial CD into the CD-ROM/DVD drive on your computer. If the AutoPlay dialog box displays, click **Run autorun.exe**.
3. The Diamante - Wave Utility dialog box displays. Click **Diamante Utilities, User Guide and more**.
4. The Diamante Utility dialog box displays. Click **Utilities, Slash screen and more**.
5. Open the **Utilities** folder.
6. Copy the **DateTimeToStentura.exe** file to the Desktop on your computer. If you created a Stenograph Utility folder on your Desktop, copy the utility to that folder.
7. Do one of the following to access files to convert:
 - Remove the Data SD card from your steno machine. Insert the card into an SD card reader and insert the reader into an available USB port on your computer.
 - Remove the Data SD card from your steno machine and insert the card into the SD card slot, if available, on your computer.
 - On the Diamante steno machine, copy the job files from the Data SD card to a thumb drive. Remove the thumb drive from the Diamante and insert it into an available USB port on your computer.
8. Double click the **DateTimeToStentura.exe** icon on your Desktop. The DateTime To Stentura dialog box displays.



9. Select the location of the date and time formatted files. In the *Choose Steno Files to Convert* field, click the **Browse** button to locate the files.
10. Select the files to convert. Do one of the following:
 - *Highlight an individual file*: click the file name.
 - *Highlight multiple consecutive files*: click the first file name and then press and hold the Shift key while you click the last file name.
 - *Highlight multiple non-consecutive files*: click the first file name and then press and hold Ctrl while you click each file to select.
11. Click **OK**. The DateTime To Stentura dialog box displays the path and file name.
12. Select the destination location for the converted file. In the *Choose Destination for Converted Steno Files* field, click the **Browse** button to navigate to the location where you want to store the converted file and click **OK**. The DateTime To Stentura dialog box displays the path and file name.
13. Check the box, *Copy and Rename Any Audio Files*, to automatically copy the audio, when available. The audio files are renamed to match the steno file name.
14. Click **OK** to convert the file.
15. When the file conversion is complete, a confirmation dialog box displays. Click **OK**.
16. When finished, click **Quit**.
17. If you copied the files to the Data SD card, remove the Data SD card from your computer and insert it into the Diamante.

Convert RTF/CRE Dictionaries

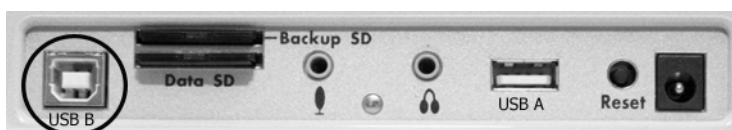
If you are not using Case CATalyst and want to load your dictionary onto the Diamante, it is necessary to use the RTF/CRE to Writer Dictionary Conversion program. You must copy the Rtf2Writer.exe onto your computer; export your dictionary to RTF/CRE format; and run the conversion.

When using the Rtf2Writer Dictionary Conversion program, only one personal dictionary can be selected and loaded onto the Diamante. You can load up to seven job dictionaries.

The RTF/CRE to Writer Dictionary Conversion program for the Diamante is only available via USB cable. You must have the Diamante USB driver installed on your computer to use the USB cable. See [Install the Diamante USB Drivers](#) on page 18 if you need to load the Diamante USB driver.

To convert and load a RTF/CRE dictionary onto the Diamante:

1. Turn your computer **On**. Ensure that it is fully booted.
2. Insert the Diamante®/Wave™ Utilities and Tutorial CD into the CD-ROM/DVD drive on your computer. If the AutoPlay dialog box displays, click **Run autorun.exe**.
3. The Diamante - Wave Utility dialog box displays. Click **Diamante Utilities, User Guide and more**.
4. The Diamante Utility dialog box displays. Click **Utilities, Splash screen and more**.
5. Open the **Utilities** folder.
6. Copy the **Rtf2Writer.exe** file to the Desktop on your computer. If you created a Stenograph Utility folder on your Desktop, copy the utility to that folder.
7. Turn the Diamante **On**.
8. Locate the USB cable. Each end of the USB cable has a different connection plug. Connect the appropriate end of the USB cable to the USB B (client) port on the back of the Diamante and a USB port on the computer.

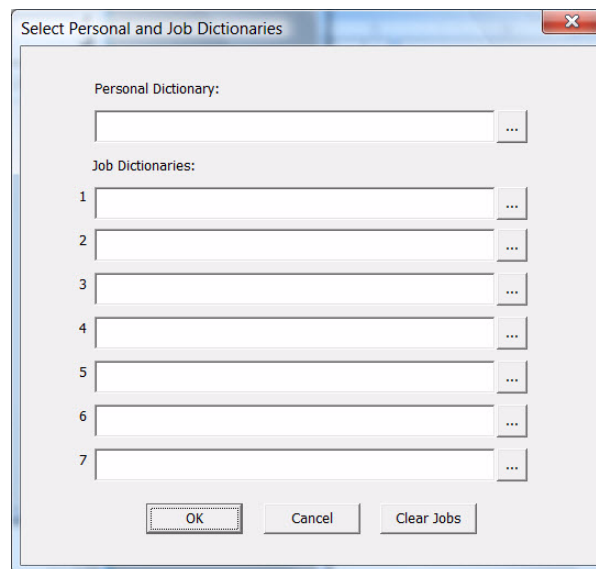


Diamante Back Port Panel

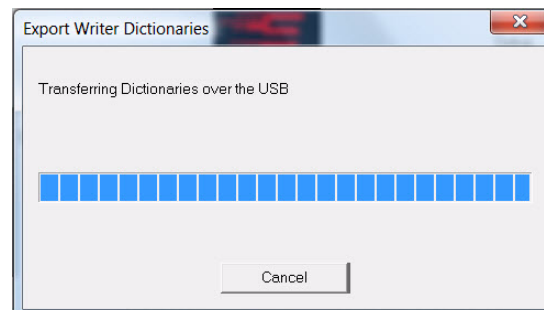
- Double click the **Rtf2Writer.exe** icon on your Windows Desktop. The RTF/CRE to Writer Dictionary Conversion dialog box displays.



- Select **USB**. The Select Personal and Job Dictionaries dialog box displays.



- In the *Personal Dictionary* field, use the **Browse** ... button to navigate to the location of the RTF/CRE dictionary you are using for your Personal dictionary.
- In the *Job Dictionaries* section, use the **Browse** ... button in each field to navigate to the location of an RTF/CRE job dictionary you are converting.
- Click **OK**. The dictionaries are transferred to the Diamante.



14. When the Diamante finishes loading the dictionary, it beeps and then reboots, displaying the Opening menu.
15. On the RTF/CRE to Writer Dictionary Conversion dialog box, click **Quit** to close the Rtf2Writer program.


Backup SD Card Reader

The Backup SD card is not designed to be removed from the Diamante unless, in a rare occurrence, you need to locate a job that cannot be found in memory or on the Data SD card. The Backup SD card must be in the Diamante in order for the steno machine to operate.

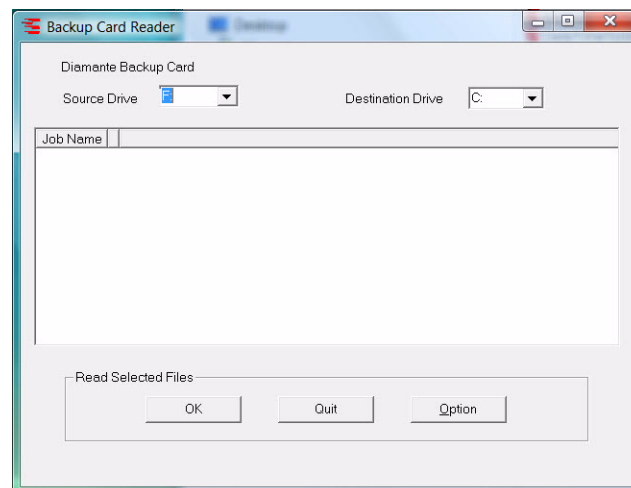
On Windows 7 and Windows Vista, it is necessary to run the BackupCard Utility as Administrator. See [Troubleshooting](#) on page 97 for additional information.

To retrieve files from the Backup SD card:

1. Turn your computer **On**. Ensure that it is fully booted.
2. Insert the Diamante®/Wave™ Utilities and Tutorial CD into the CD-ROM/DVD drive on your computer. If the AutoPlay dialog box displays, click **Run autorun.exe**.
3. The Diamante - Wave Utility dialog box displays. Click **Diamante Utilities, User Guide and more**.
4. The Diamante Utility dialog box displays. Click **Utilities, Slash screen and more**.
5. Open the **Utilities** folder.
6. Copy the **BackupCard.exe** file to the Desktop on your computer. If you created a Stenograph Utility folder on your Desktop, copy the utility to that folder.
7. Turn the Diamante **Off**.
8. Remove the Backup SD card from the Diamante. Gently push the Backup SD card and then release your finger. The card releases from the slot.
9. Insert the Backup SD card into the USB SD Flash Drive reader and insert it into an available USB port. If the AutoPlay dialog box displays, click the **X** in the upper right corner.

 It is necessary to read the Backup SD card using the USB SD Flash Drive reader that came with your Diamante or another reliable USB based external SD card reader. A built-in SD card slot reader on your computer cannot read the Backup SD card.

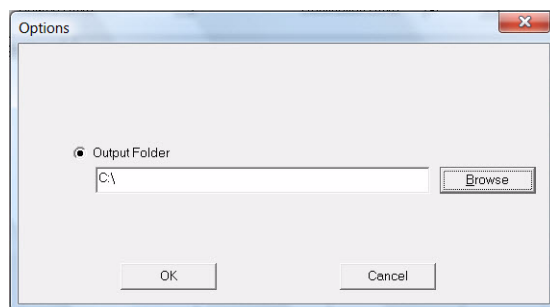
10. Double click the **BackupCard.exe** icon on your Desktop. The Backup Card Reader dialog box displays.



11. In the *Source Drive* field, select the appropriate drive letter, from the drop down list, that is assigned to the drive containing the Backup SD card. The files on the card display.
12. In the *Destination Drive* field, select the drive letter, from the drop down list, where you are saving the retrieved file.

To select a specific location on the destination drive:

- a. Click **Option**. The Options dialog box displays.



- b. Click the radio button in the *Output Folder* field.
 - c. Use the Browse button to navigate to the desired location and click **OK**. The path displays in the field.
 - d. Click **OK** to close the Options dialog box.
13. The Backup Card Reader dialog box displays with the specified destination path below the *Destination Drive* field.
 14. Select the file to retrieve. Do one of the following:
 - Highlight an individual file: click the file name.
 - Highlight multiple consecutive files: click the first file name and then press and hold the Shift key while you click the last file name.
 - Highlight multiple non-consecutive files: click the first file name and then press and hold Ctrl while you click each file to select.
 15. Click **OK**. The files are saved to the selected destination drive. Each file name is saved based on the date and time the file was originally created and placed into the folder from which it was extracted. For example, if the selected file is 20090721-102113, created July of 2009, the folder name is, 200907.
 16. When you have finished retrieving files from the Backup SD card, click **Quit**.
 17. Remove the SD card reader from the computer and remove the Backup SD card from the reader.
 18. **Insert the Backup SD card into the Backup SD slot on the Diamante. The Diamante requires that a Backup SD card is in the steno machine in order to operate.**

TrueView

TrueView is a Diamante utility program that allows you to analyze your steno strokes by viewing the TrueStroke™ data (Steno X-ray2) generated by the Diamante. TrueStroke data is gathered while writing on the Diamante and contains information about timing, the direction of travel and the velocity for each steno key in each steno outline. This allows you to examine a steno outline to determine the cause for a stroke to register as it did, providing instant feedback on your writing style. For example, you may want to examine split, stacked, dragged or dropped strokes.

The TrueView Utility permits viewing of TrueStroke data when you are not using Case CATalyst or another CAT system. You can:

- Write realtime directly to TrueView via a USB connection to your Diamante.
- Read files via a USB connection from your Diamante's Data SD card.
- Open an existing Diamante file that has been read to your computer or translated.

In Case CATalyst version 10.07 or higher, TrueStroke data is automatically stored in the job subfile, Steno X-ray2. It is viewable by double clicking a steno stroke from the vertical notes.

Copy the TrueView Utility

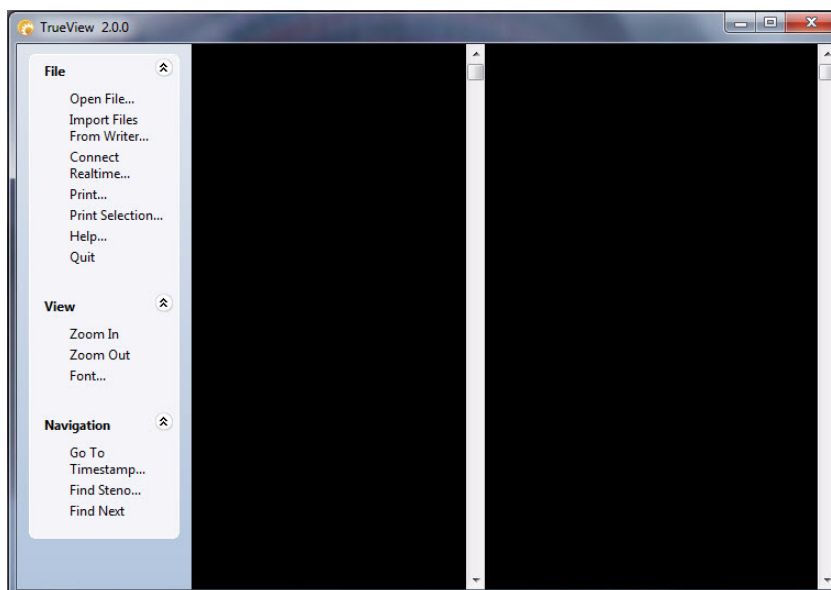
To view TrueStroke data using TrueView, you must first copy the TrueView utility to your computer. The TrueView Utility is located on the Diamante®/Wave™ Utilities and Tutorial CD shipped with your steno machine. If you do not have access to the CD, the utility is available for download at www.stenograph.com. Click **Support/Downloads/Utilities & links/TrueView Utility for Diamante/Wave users**.

To copy the TrueView Utility

1. Turn your computer **On**. Ensure that it is fully booted.
2. Insert the Diamante®/Wave™ Utilities and Tutorial CD into the CD-ROM/DVD drive on your computer. If the AutoPlay dialog box displays, click **Run autorun.exe**.
3. The Diamante - Wave Utility dialog box displays. Click **Diamante Utilities, User Guide and more**.
4. The Diamante Utility dialog box displays. Click **Utilities, Slash screen and more**.
5. Open the **Utilities** folder and double click the **TrueView** folder.
6. Copy the **TrueView.exe** file to the Desktop on your computer. If you created a Stenograph Utility folder on your Desktop, copy the utility to that folder.

Access TrueStroke Data

1. Open the TrueView utility. Double click the TrueView icon. The TrueView screen displays.



2. The screen is divided into three columns with the TrueView menu on the left. Click one of the following features on the TrueView menu to open a Steno X-ray2 file:

Open File

Open an existing steno file on the hard drive or removable media. The Open dialog box displays allowing you to navigate to the desired file.

Import Files From Writer

Import an existing file from the Diamante onto your computer to view it in TrueView.

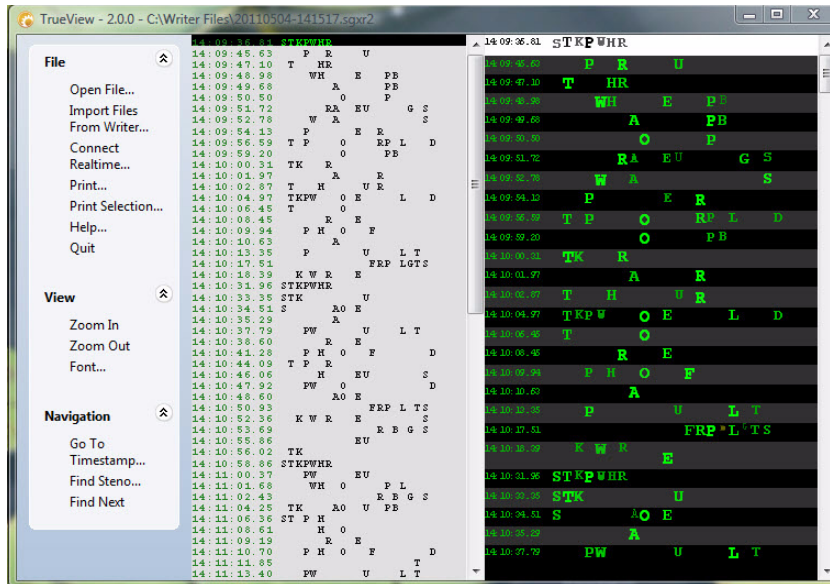
- a. Ensure the Diamante is connected to your computer and turned **On**.
- b. Click **Import Files From Writer**. The Select the files you wish to copy dialog box displays. It may take a few seconds to display the list. The Diamante files are stored in Year/Month folders with a date/time name.
- c. Use Windows conventions to select files and click **OK**. The Browse For Folder displays.
- d. Navigate to the location to which you are copying the files and select **OK**. The imported files are saved in the selected location with the original file name.
- e. At the *Import Complete* message, press Enter (**OK**).
- f. Use *Open File* on the TrueView menu to view the TrueStroke data.

Connect Realtime

View TrueStroke data for the realtime file. See [Connect for Realtime Writing](#) on page 19 for detailed information about realtime writing.

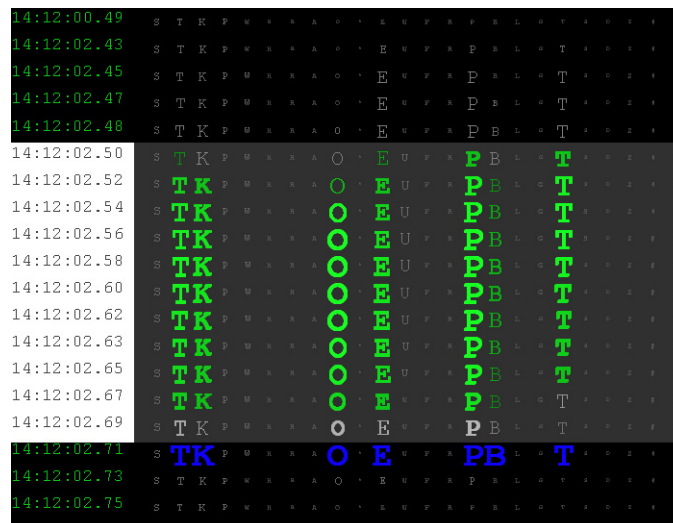
- a. Ensure your steno machine is On.
- b. Connect the Diamante to your computer via the USB cable.

- c. Write a stroke on the steno machine.
 - d. In the TrueView dialog box, select **Connect Realtime**. The Save As dialog box displays. Navigate to where you want to save the realtime file. Type a file name and select **Save**.
5. The selected file displays with the steno note file in the middle column and the TrueStroke data, in Compact view, in the right column.



Vertical Notes with TrueStroke Data in Compact View


6. Double click the TrueStroke data column to toggle the view, from Compact to Expanded. Expanded view shows the TrueStroke details for each stroke. The details reveal the timing, direction of travel, depressed or released, and velocity of the steno keys in a stroke. See [Understanding the TrueStroke Data](#) on page 118 for more information on data interpretation.



TrueStroke Data in Expanded View

7. Additional TrueView features allow you to search, zoom, modify the font and print the TrueStroke data. See [TrueView Menu Features](#) on page 120 for feature details.

Understanding the TrueStroke Data

TrueStroke data, in Compact view, provides initial information about a keystroke, assisting you in locating steno outlines you may want to review. For example, you may notice steno outlines in the TrueStroke data column that contain characters which appear lighter or darker than others in the same stroke; characters that are higher or lower than others; or you may notice a stroke that contains a character with a horizontal bar through it, , indicating a key was pressed but did not register. Double clicking the steno outline opens Expanded view, providing detailed information about the stroke.

TrueStroke data, in Expanded view, displays each individual character of the keystroke in specific colors at varying intervals in the keystroke:

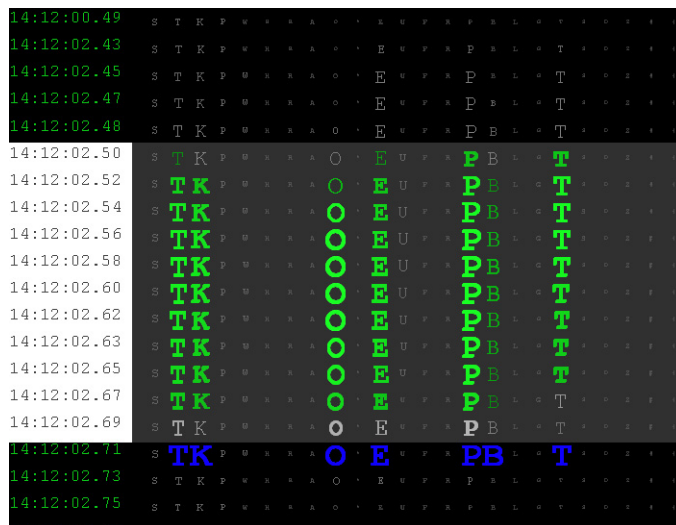
- The light gray color at the beginning of the stroke indicates the key is being pressed down.
When the light gray color continues to display for a key, it indicates a shadowed character that does not register. In Compact view, a shadowed character displays with a horizontal bar through it.
- The green color indicates the key has been held down long enough and with sufficient velocity to register. The brighter the color, the more pressure or velocity occurred when the key was depressed.
In a multi-character steno outline, some keys are visible in the down stroke before other characters. This indicates that the keys were pressed at different times instead of all together.
- The soft white color shows when the keys are released and move up.
- The blue color closely represents when TrueStroke registers all the keys as a complete stroke.

Example 1

The steno outline for the word, “don’t” occurs in the steno notes. Some characters appear lighter and higher than others. The “U”, displays with horizontal bar indicating it was pressed but did not register.

14:12:02.49 TK O E U P B T

Double clicking in the TrueView column displays the steno strokes in Expanded view.



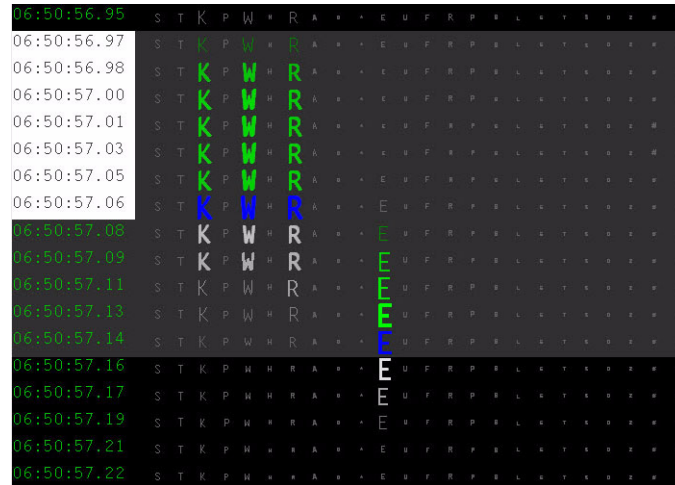
The “O” and “P” keys are bright green throughout the stroke, indicating they received consistently strong pressure on the downstroke. The “B” key receives less pressure as indicated by the lighter green color. All the intended keys are pressed or released at approximately the same time and are registered as indicated by the blue color.

Example 2

The steno outline for the word, “yes” occurs in the steno notes. This two stroke outline was intended to be written as a single stroke.



Double clicking in the TrueView column displays the steno strokes in Expanded view.



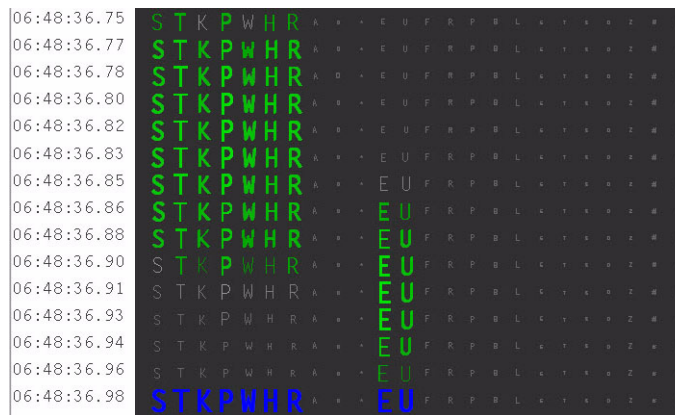
The “K” “W” and “R” keys display in green and register together, as indicated by the blue but are then dragged, as shown by the light gray color and no longer register while the “E” key is depressed. All the intended keys did not get pressed or released at the same time resulting in the single stroke splitting into two strokes.

Example 3

The steno outline for the “Q” followed by the word “I” occur in the steno notes. This one stroke outline was intended to be written as two strokes.



Double clicking in the TrueView column displays the steno strokes in Expanded view.



The “S” “T” “K” “P” “W” “H” and “R” keys display in green and continue to display in green when the “E” and “U” keys are depressed. The keys intended for the first stroke were not released before the keys for the keys for the second stroke were depressed. All the keys register together, as indicated by the blue color.

TrueView Menu Features

Use the TrueView Menu to open a desired file for viewing, examine the TrueStroke data and search the file for specific steno strokes. Click a menu item, to invoke the feature.

File

View TrueStroke data for files on your computer hard drive or removable media; for files imported from the Diamante onto the hard drive; or the steno notes for a current realtime.

Open File

Open an existing steno file on the hard drive or removable media. The Open dialog box displays allowing you to navigate to the desired file.

Import Files From Writer

Import existing files on the Diamante onto your computer to view the TrueStroke data. The Diamante must be connected to your computer and turned On.

1. Click **Import Files From Writer** to display the Select the files you wish to copy dialog box. Depending on the number of files on the steno machine, it may take a few seconds for the list of files to display.
2. Use Windows conventions to select one or more files for copying onto your computer and select **OK**. The Browse For Folder displays.
3. Navigate to the location where you are copying the files and select **OK**. The imported files are saved in the selected location with the original file name.
4. Use *Open File* to view the TrueStroke data for a selected file.

Connect Realtime

View TrueStroke data for the realtime file. See [Connect for Realtime Writing](#) on page 19 for detailed information about realtime writing with the Diamante.

1. Ensure your steno machine is On.
2. Connect the Diamante to your computer via the USB cable.
3. Write a stroke on the steno machine.
4. In the TrueView dialog box, select **Connect Realtime**. The Save As dialog box displays.
5. Navigate to the location where you are saving the realtime file. Type a file name and select **Save**.

Print

Send all the TrueStroke data, in compact view, to the selected printer.

Print Selection

Sends selected TrueStroke data from the file, in compact view, to the selected printer.

Help

Display TrueStroke Data Help which details how to interpret the TrueStroke data.

Quit

Closes the TrueView dialog box.

View

Zoom In

Incrementally increase the font size of the TrueStroke data display to its original size after using Zoom Out. The Zoom feature does not affect the steno note section.

Zoom Out

Incrementally decrease the font size of the TrueStroke data display. This is useful when the entire steno outline is not visible without scrolling. The Zoom feature does not affect the steno note section.

Font

Change the font type for the steno notes and TrueStroke data display. Other attributes, such as font size and font style do not apply. Changing font attributes has no affect on either display.

Navigation

Go To Timestamp...

Move the cursor to a specific steno outline based on the timestamp. Type the hour and minute or the entire timestamp and select **OK**. This option may be useful when searching for the same steno note location in a transcript on your CAT system.

Find Steno...

Move the cursor to a specific steno outline. Type each character in the steno outline you are searching using a hyphen (–) to indicate a final character. For example, you are searching on “Mike.” You type, PH for M, AOEU for long I, BG for final K. Select **OK** to start the search. This option may be useful when searching for the same steno note location in a transcript on your CAT system.

Find Next

Repeat the search for the current steno outline. If the search reaches the end of the file, it continues from the beginning of the file.

Perform Diamante Key Adjustments

If you are getting unwanted characters or are missing characters in steno outlines, perform the following troubleshooting steps in the order listed:

1. If there are steno strokes you continually misstroke, and that misstroke cannot be defined as anything else, it is strongly recommended that you define the outline in your dictionary.
2. If you are using Case CATalyst or a CAT system that has a Drag/Drop feature which allows you to identify keys you tend to drag or drop, you may want to try identify the keys and then test the result. In Case CATalyst, refer to the *Case CATalyst Help*.
3. Increase or decrease the keyboard tension slightly. See [Adjust Keyboard Tension](#) on page 24.
4. Increase or decrease the keyboard's depth of stroke. Setting the shortest depth of stroke in conjunction with the lightest keyboard tension is vulnerable to stacking or dragging a key or keys. See [Keyboard Depth and Tension Controls](#) on page 24.
5. Tilt the Diamante either slightly forward or backward. The tilting mechanism is built into the bottom of the steno machine and does not require a tilting tripod. See [Tilting the Diamante](#) on page 32.
6. Perform Keyboard Option adjustments. See [Keyboard Adjustments](#) on page 70 for specific steps on performing Keyboard Sensitivity, Split/Stack and Transition Time option changes.
7. Make individual key contact adjustments. Conduct this procedure only after completing all the previous troubleshooting steps. See [Keyboard Adjustments](#) on page 70.

Troubleshooting TrueView

File is open on writer. Please close file and try again.

This message displays when attempting to write realtime. Check the following:

1. All the files on the Diamante must be closed when using the TrueView feature, *Import Files from Writer*. End the open file on the writing machine and try again.
2. Diamante drivers must be installed on your computer. Ensure the device drivers are installed. The device drivers are located on the Diamante®/Wave™ Utilities and Tutorial CD that came with your steno machine. See [Install the Diamante USB Drivers](#) on page 18.

Connection with writer was lost.

TrueView stopped receiving the realtime feed. When writing realtime and the USB cable is disconnected, TrueView stops receiving the realtime feed. To reestablish the realtime connection:

1. Select **OK** to dismiss the message.
2. Reconnect the USB cable.
3. Write a few strokes and select **Connect Realtime**.
4. If you get the error message, "Cannot connect to writer (259)," dismiss the message. Write a few strokes and select **Connect Realtime**.

File Closed on Writer

When you press End on the writing machine, the realtime connection ends. Reestablish the realtime connection. Write a few strokes on the writing machine and select **Connect Realtime**.

Index

- A
 - A/An resolution 39
 - Audio 40
 - auto pause resume 41
 - compression quality 41
 - feedback noise 97
 - headphone volume 41
 - listening 40
 - microphone gain 41
 - monitor audio 41
 - not resuming 97
 - on/off 41
 - playback 42
 - set options 40
 - setup 40
 - storage 40
 - Auto-Conflict Resolution 43
- B
 - Backup SD card
 - about SD cards 26
 - error message 98
 - format 44
 - insert and remove 27
 - retrieve file 113
 - run backup.exe as administrator 100
 - sd flash drive reader 28
 - write protect slide 27
 - Battery
 - about charging 14
 - about main and backup 14
 - backup charging icon 29
 - changing 17
 - charging indicator 29
 - charging procedure 14
 - charging status 15
 - failsafe mode 14
 - gauge 17
 - messages 17
 - reduce backlight level 91
 - status 15
 - Beeper volume 46
 - Brief It
 - about 47
 - accept, suggest new, reject 48
 - suggest one stroke brief 50
 - turn off during job 49
 - turn on/off 49
 - write twice 50
- C
 - Communications
 - port 18
 - usb option 95
 - wireless 22, 96
- Copy log 51
- D
 - Data SD card 52
 - about SD cards 26
 - change 53
 - check available space 53
 - format 52
 - insert and remove 27
 - sd flash drive reader 28
 - write protect slide 27
 - Date/Time file conversion 108
 - Dictionaries 55
 - about using J-Defines 60
 - convert RTF/CRE 110
 - export prefissuffixrules.ini file 87
 - export spell check wordlist 87
 - load 55
 - problem reading 98
 - selecting job dictionaries 56
 - Drivers
 - install USB for Diamante 18
- E
 - Electronic marks 59
- F
 - FailSafe mode 14
- Font
 - colors 90
 - size 90
- J
 - J-Defines 60
 - clear 63
 - create 62
 - spell mode 64
 - write to Data SD card 63
- Job
 - convert files to Stentura format 108
 - reopen 79
 - test mode 88
- Job statistics 68
- K
 - Keyboard
 - adjust depth of stroke 24
 - adjust tension 24
 - adjustments 70
 - default settings 71
 - layout 69
 - sensitivity 70
 - settings 70
 - split/stacked strokes 70

Index

- transition time 71
- M
- Marks 59
- Memory
 - about 74
 - clear 75
 - copy files 74
 - view files 74
- Menus 34
- N
- New View 76
- O
- Options
 - a/an resolution 39
 - audio 40
 - auto-conflict resolution 43
 - backlight 91
 - keyboard 70
 - prompt end job 78
 - save TrueStroke files 94
 - set beeper volume 46
 - strokes per minute 58
 - usb communication 95
- P
- Prompt end job 78
- R
- Realtime
 - connect USB for realtime 19
 - icon 29
 - no display 99
 - usb cable connection 20
 - usb virtual serial port connection 21
 - wireless connection 22
- Reopen 79
- Reset 25, 98
- S
- Scroll 80
- Search
 - about 81
 - last A 81
 - last mark 82
 - last Q 81
 - last steno stroke 82
 - last untranslate 83
- Secure Digital Card 26
- Spell Mode 64
- Splash screen 106
- Status information 85
- Status LCD
 - about 29
 - backup battery charging icon 29
 - charging indicator 29
 - file open icon 29
 - on/off icon 29
 - wireless icon 29
- Steno notes
 - missing/dropped 70
 - shadowing 70
 - split/stack 70
- Steno test 86
- Steno X-ray2 94
- Strokes per minute 58
- Suffix Handling 87
- T
- Test mode 88
- Thumb drive 89
- Tilting screen
 - about 30
 - backlight dim level 91
 - backlight level 91
 - backlight options 91
 - change view 76
 - cleaning 30
 - font size 90
 - function buttons 23
 - status bar 37
 - text color 90
- Time and Date 92
- Translate Options 93
 - a/an resolution 39
 - auto-conflict resolution 43
- Tripod
 - adjust height 32
 - adjust tilt 32
 - attach to Diamante 31
 - remove from Diamante 32
- TrueStroke
 - about 94
 - set option 94
 - view data 116
- TrueView
 - about 115
 - copy to hard drive 115
 - individual key adjustments 122
 - troubleshooting 122
 - view TrueStroke data 116
- U
- Update
 - Diamante software 103
 - unable to update software 99
- USB
 - communication option 95
 - connection requirements 19
 - install drivers 18
 - powering by 19
 - realtime communication 20
 - unable to update 99
 - unknown device message 100
 - unresponsive connection 99
 - virtual serial port connection 21
- USB SD Flash Drive Reader 28
- W
- Warnings
 - prompt end job 78

Wireless 22

