



# Installation and Configuration Guide

Version 17

© 2002 - 2016 by Stenograph. All Rights Reserved. This material is protected by Federal Copyright Law and is not to be copied or reproduced in any form or medium without prior written authorization from Stenograph. Published 2002, Thirteenth Edition February 2016.

STENOGRAPH PROPRIETARY: This material constitutes proprietary and trade secret information of Stenograph, and shall not be disclosed to any third party, nor used by the recipient, except under the terms and conditions of the license agreement between the customer and Stenograph.

Changes may be made periodically to the information in this publication. Such changes will be incorporated in any new edition of this manual.

Stenograph is a Pettibone Company.

Stenograph, Case CATalyst, CATalyst, Premier Power and the Stenograph logo are registered trademarks of Stenograph.

e-Key and Case AudioSync are trademarks of Stenograph.

TurboCAT and CAPtivor are trademarks of Cheetah Systems, Inc.

Windows is a registered trademark of Microsoft Corporation. Windows Vista is a trademark of Microsoft Corporation.

Acrobat Reader is a registered trademark of Adobe Systems Inc.

All other trademarks are the property of their respective owners.

---

<b>Chapter 1: Introduction</b> .....	<b>5</b>
Who Should Read This Guide .....	5
User Guide Overview.....	5
Where To Go For More Information.....	6
<b>Chapter 2: Installation Requirements</b> .....	<b>7</b>
Installing the Software .....	9
<b>Chapter 3: Installation</b> .....	<b>9</b>
Case CATalyst Update Installation .....	17
Uninstall Case CATalyst Software .....	18
Changing Users .....	23
Convert Dictionaries .....	23
<b>Chapter 4: Configuration</b> .....	<b>23</b>
Add Delete and Flush Strokes to Dictionaries .....	25
Error Messages .....	27
<b>Chapter 5: Troubleshooting</b> .....	<b>27</b>
Stenograph Technical Support .....	30
<b>Appendix 6: Network Keyless Access</b> .....	<b>31</b>
Update Case CATalyst Program Files.....	37
<b>Appendix A: Update Case CATalyst Software</b> .....	<b>37</b>
Downloading the Update .....	38
Network Setup Guidelines .....	41
<b>Appendix B: Network Installation</b> .....	<b>41</b>
Network Setup Scenarios .....	42
Workstation Setup .....	44



# Introduction

The Case CATalyst® Installation and Configuration Guide explains how to install Case CATalyst on a computer and activate your e-Key™. If you purchased the CATalyst Broadcast Captioning Suite (BCS) or CATalyst VP, follow the Case CATalyst installation instructions.

This guide also describes troubleshooting steps if you encounter difficulties. Additional information about updating Case CATalyst software and Case CATalyst network installation is available in the appendices.

## Who Should Read This Guide

Court reporters, scopists, captioners and others installing Case CATalyst, CATalyst BCS or CATalyst VP can use this guide for step-by-step instructions to install and customize the program. Those responsible for keeping the system up and running can use this guide to troubleshoot any issues that may arise.

## User Guide Overview

The Case CATalyst Installation and Configuration Guide consists of:

**Chapter 1, Introduction**, explains how the guide is organized along with references to additional resources.

**Chapter 2, Installation Requirements**, explains the computer hardware necessary to run Case CATalyst.

**Chapter 3, Installing Case CATalyst**, explains how to install the Case CATalyst software and activate your e-Key.

**Chapter 4, Case CATalyst Setup**, explains how to start the software, change users, convert dictionaries and add delete strokes to your dictionary.

**Chapter 5, Troubleshooting**, lists Case CATalyst error messages along with the most likely reason they appear and potential solutions.

**Appendix A, Updating Case CATalyst Software**, explains how to use the Case CATalyst, Check for Updates, feature to install updates to your computer and download the update for installation onto a computer not connected to the internet.

**Appendix B, Installing Case CATalyst Network Keyless Access**, explains how to setup Case CATalyst using NKA (Network Keyless Access) on a server.

**Appendix C, Installing Case CATalyst on a Network**, explains how to setup Case CATalyst on a network and network workstations.

## ***Where To Go For More Information***

In addition to the *Case CATalyst Installation and Configuration Guide*, you may want to refer to the following resources. For additional details, see “Training Tools” on page 20.

Case CATalyst Help (F1) for Case CATalyst, CATalyst BCS, CATalyst VP

Case CATalyst Manual with CATalyst BCS and CATalyst VP Information

Case CATalyst Command Summary Cards

CATalyst BCS Command Summary Cards

CAT4 Command Summary Cards

Interactive Video Training: Essential Skills and Productivity Boosters

Self-Study Guides

Exceptional Extras

Sample Voice Files

Stenograph Help Desk ([www.stenograph.com](http://www.stenograph.com))

# Installation Requirements

Congratulations on your purchase of Case CATalyst, Stenograph's most successful computer-aided transcription (CAT) software with optionally purchased CATalyst BCS, a contemporary captioning solution, or CATalyst VP. Before installing Case CATalyst software on your computer, confirm your computer meets or exceeds the hardware requirements listed in this chapter. If your computer system meets the listed requirements, install Case CATalyst, as described in the *Installation* chapter on page 9.

**IMPORTANT:** For Case CATalyst to operate properly, it is imperative that your computer meet the following minimum recommended hardware requirements. If you are installing CATalyst BCS or CATalyst VP, contact [Stenograph Technical Support](#) for specific hardware requirements.

## **Operating System:**

One of the following operating systems:

- Windows 10 - 32-bit or 64-bit
- Windows® 8.1 - 32-bit or 64-bit
- Windows 7 - 32-bit or 64-bit.
- Windows Vista™, 32-bit or 64-bit.

Windows XP is not recommended. Microsoft ended support of Windows XP in 2014 and will no longer provide security updates or support information. Stenograph strongly recommends using a current Operating System due to security concerns and limited ability to troubleshoot XP related issues.

## **Computer processor**

- Windows 10 / Windows 8.1 / Windows 7 / Windows Vista - Pentium processor speed of 2GHz or higher. A Pentium D, Core 2 Duo, i3, i5, i7 or AMD equivalent processor is strongly recommended.

## **RAM Memory**

RAM, Random Access Memory, is the amount of space on your computer that is devoted to processing. **The more RAM your computer has, the more space it has to work and the faster it can respond.**

- Windows 10 / Windows 8.1 / Windows 7 / Windows Vista - 2GB RAM or more.  
If using CATalyst VP, at least 4GB of RAM is recommended but please contact Stenograph's Technical Support Department for the optimal performance hardware recommendations.

## **Hard Drive**

- Windows 10 / Windows 8.1 / Windows 7 / Windows Vista - At least a 40GB hard drive with at least 20GB free space. An 80GB or more hard drive is strongly recommended.

## **Ports**

A USB port for the writing machine to write realtime, update the writing machine dictionary and update the writing machine software.

A 9-pin Serial port or USB port for a USB to serial port compatible adapter to connect to the writing machine. Depending on your steno machine, a 9-pin serial port may be optional.

### ***Video Card***

Windows Vista and Windows 7 - A DirectX 9-capable video card with video drivers and a minimum of 256 VRAM.

### ***Display***

SVGA monitor with 1024 x 768 or higher display.

### ***Audio Card***

A Windows compatible sound card for audio recording at 8Kz, 16-bit.

### ***Microphone***

A Windows compatible external, self-powered microphone.

### ***Mouse***

Mouse or other pointing device. Some features, such as customizing the toolbar, may be difficult to implement without a mouse.

### ***Keyboard***

Text input device. Many editing commands rely on the Function Keys (F1 - F12), especially relying on F4 when inserting format symbols. Stenograph suggests you purchase a PC that has Function Keys.

### ***External Floppy Drive (Optional)***

Legacy writing machines may require an optional external 3 1/2" diskette drive for reading notes and importing and exporting files.

### ***Network compatibility***

TCP/IP protocol is required for specific communications features.



# Installation

This chapter details the Case CATalyst software installation process. CATalyst BCS and CATalyst VP install with Case CATalyst software. CATalyst BCS and CATalyst VP are each optional purchases. Your e-Key code includes access to the software when purchased.

After successfully installing Case CATalyst on a computer running Windows 10, Windows 8, Windows 7 or Windows Vista, Case CATalyst must be set to run as “administrator.” Instructions to set Case CATalyst to run as “administrator” are included in this chapter.

Your e-Key requires activation the first time Case CATalyst Version 17 or higher opens following installation and seamless reauthorization on a quarterly basis. Initial activation instructions are included in this chapter. As your renewal date approaches, Case CATalyst may prompt you to update the license file depending on your settings. Internet access is necessary to update the file.

The User Account Control or Permissions message box displays during Case CATalyst software installation. The User Account Control (UAC) is an important security feature of Window 10, Windows 8.1, Windows 7 and Windows Vista. It prompts you for permission to run the displayed program name or service being accessed. The current Windows user must have administrative rights to permit the installation. If the current user does not have Administrative rights, the UAC prompts you for the Administrator user name and password. Stenograph **does not** recommend disabling the UAC.

## Installing the Software

The Case CATalyst installation program provides step-by-step instructions to guide you through the Case CATalyst software installation process. If you are updating to Case CATalyst Version 17, ensure your e-Key license is updated before installation.

If you are currently running Case CATalyst Version 12.54 or higher, you can quickly update to Version 17 via the Internet. See [Case CATalyst Update Installation](#) on page 17.

### Install Case CATalyst

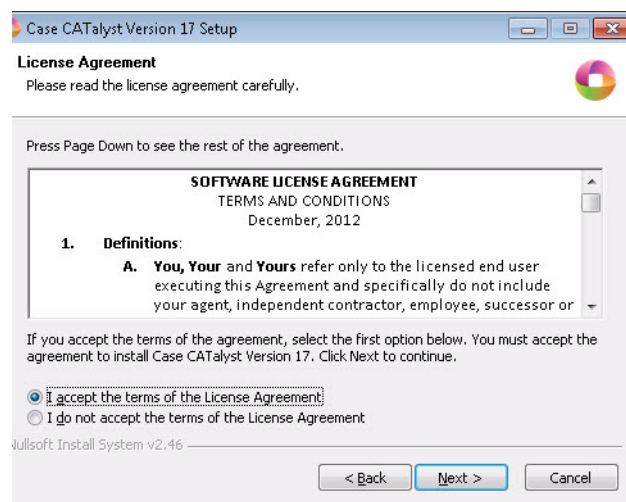
1. Start your computer. Make sure it is fully booted.
2. Close all Windows programs before running the install program.
3. Go to the Stenograph web site and download V17. Go to [www.stenograph.com](http://www.stenograph.com), click Support, Download Center and then Case CATalyst. Two V17 downloads will be available, do one of the following:
  - To download the Case CATalyst V17.X along with the Integrated training videos, (IVTs), right click the V17.0X with IVTs link, select Save Target As or Save Link As from the right click menu and select your Desktop or a convenient location on your hard drive.
  - To download the Case CATalyst V17.0X without the integrated training videos, click the V17.0X without IVTs link, select Save Target As or Save Link As from the right click menu and then select your Desktop or a convenient location on your hard drive to save the file.

## Case CATalyst Installation and Configuration Guide

- To start the Case CATalyst installation, double click the Case CATalyst V17.X exe you just downloaded.
- When active, the User Account Control (UAC), a security feature in Windows 10, Windows 8, Windows 7 and Windows Vista, prompts you for permission to allow the Case CATalyst installation. Select **Yes** or **Continue**. The current Windows user must have Administrator rights. If the current Windows user does not have Administrator rights, the UAC prompts you to enter the Administrator user name and password. It may take a few minutes for the Case CATalyst Setup Wizard to display. When the “Welcome to the Case CATalyst Version 17 Setup Wizard” screen displays, do the following:
  - View Case CATalyst Version 17 feature highlights. Click **Case CATalyst Version 17 Highlights** or anywhere in the list.
  - Press **Enter (Next)** to continue the installation.

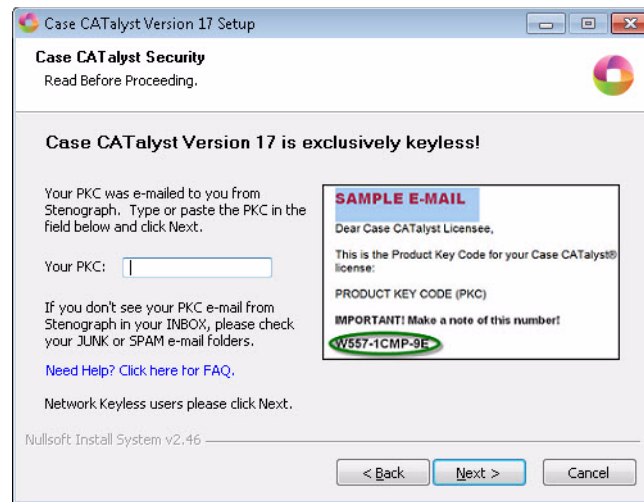


- At the “License Agreement” screen, read the license information carefully. To access the entire license agreement, scroll down.



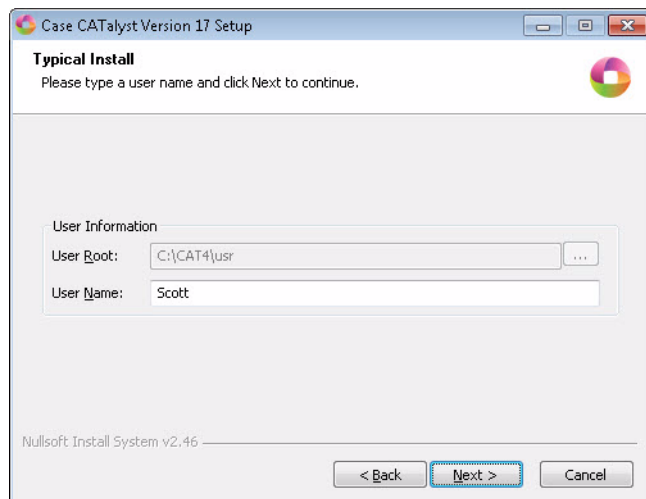
To continue the installation, click ***I accept the terms of the License Agreement*** and press **Enter (Next)**. If you select, ***I do not accept the terms of the License Agreement***, the installation cancels and the Setup screen closes.

At the “Case CATalyst Security” screen, press **Enter (Next)**.



Your PKC was e-mailed to you. Type your PKC in the Your PKC: field. At the end of the installation, if you have internet access, CATalyst will attempt to authorize your e-Key. If you do not type your PKC or do not have internet access at the time of the installation, the first time you start CATalyst you will be prompted to activate your e-Key. For more information, see e-Key activation on Page 15.

7. At the “Choose Components” screen, select the installation options that best suits your needs.



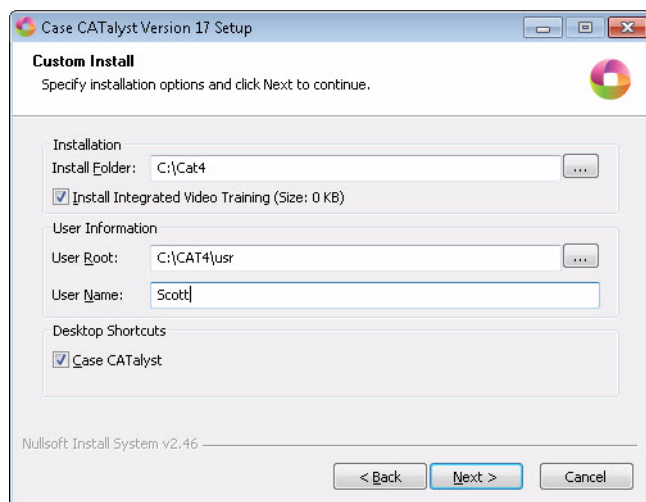
### **Typical**

Install Case CATalyst software and the Integrated Video Training onto the hard drive with a Case CATalyst shortcut created on the Desktop. The Installation process determines the location and creates the folder name, C:\CAT4. When updating from a previous version of Case CATalyst, the Typical installation only replaces the existing Case CATalyst program files. Typical is the easiest installation. This is the default choice.

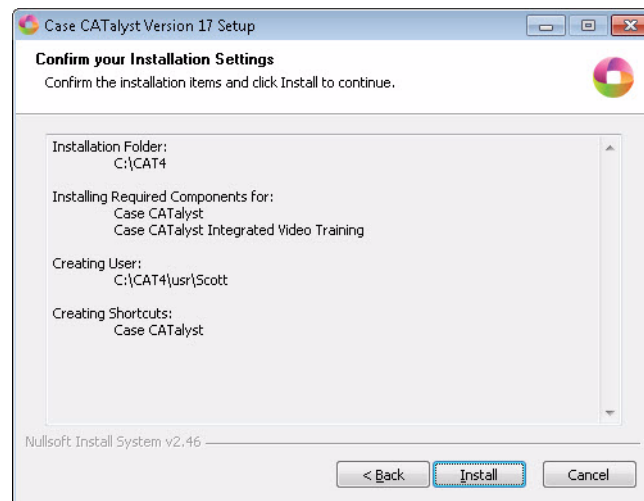
### **Custom**

Install Case CATalyst software based on selected options. Choose your location, drive and folder for installation. Optionally choose to install the Integrated Video Training, create a Case CATalyst Desktop shortcut, specify a User Root and User Name and display the Readme file following the install. Custom installation is designed for advanced users.

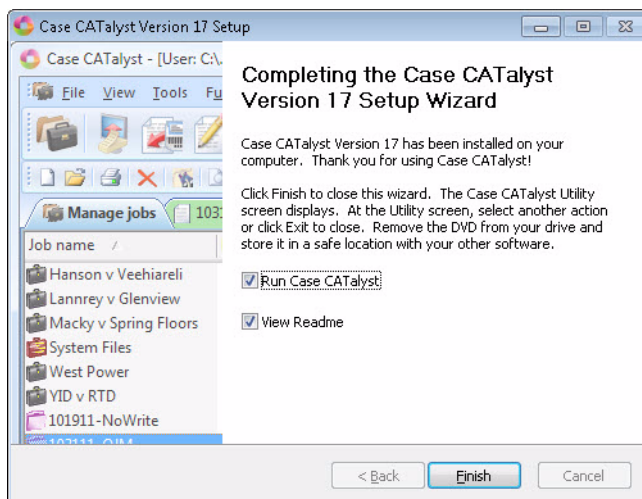
Select **Custom** and click **Next** to display the Custom Install screen and make entries.



- **Install Folder** - Specify the installation location for the Case CATalyst software. Use the Browse button to navigate to the desired location.
  - **Install Integrated Video Training** - Check this box to install the Integrated Video Training that includes Essential Skills and Productivity Boosters training modules. Essential Skills are designed for new users to quickly learn Case CATalyst basics. Productivity Boosters provide additional advanced training. You can use the Case CATalyst option, *Create Training User*, to create a user with sample files that work in conjunction with the Essential Skills Integrated Video Training for hands-on practice.
  - **User Root** - Specify the location for the Case CATalyst user files. Use the Browse button to navigate to the desired location. A user root folder is the first hierarchical level in the Case CATalyst file structure that contains user names and files. The default user root is C:\CAT4\usr. Case CATalyst requires at least one User Root folder.
  - **User Name** - Specify the User name to use in Case CATalyst. It is necessary to type a user name to continue the installation. You can add more user names, once you install Case CATalyst and access the program.
  - **Desktop Shortcuts** - Check the appropriate box to create a Desktop shortcut for Case CATalyst. Adding a shortcut to your desktop allows you to start Case CATalyst by double clicking the icon.
8. Press **Enter (Next)**. The “Confirm the Installation Settings” screen displays with the type of component selected, *Typical* or *Custom* with specified options.



9. Review your selection and press **Enter (Install)** to begin installation. If it is necessary to make a change, click **Back**.
10. The Case CATalyst software installs. The “Installing” screen displays the progress of the software installation. This could take a few minutes. Messages may display for extended periods of time until the software installation completes.
11. When the installation finishes, the “Completing the Case CATalyst Version 17 Setup Wizard” screen displays.



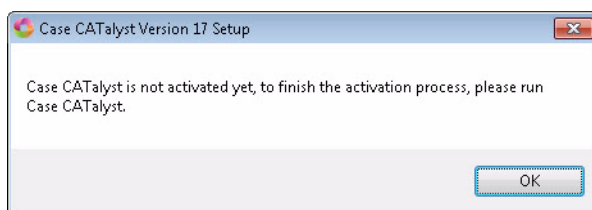
12. Do any of the following:

- Select or deselect the Run Case CATalyst option and click **Finish**.
- Select or deselect the View Readme option and click **Finish**. The Readme provides a link to the Release Notes which give detailed information about new features and software modifications.

13. Set Case CATalyst to run as “administrator. See [Set Compatibility Properties](#) on page 14. After setting the compatibility properties, follow the instructions to activate your e-Key on on page 15.

Continue with the instructions to activate your e-Key. See [e-Key Activation](#) on page 15.

If you entered a PKC during installation but did not have Internet access and you selected to not run Case CATalyst immediately after installing, the following message displays. Run Case CATalyst and see e-Key Activation on Page 15.



## Set Compatibility Properties

It is necessary to set the compatibility properties on Windows 10, Windows 8, Windows 7 and Windows Vista systems for Case CATalyst Version 17 to run as “administrator.” Setting Case CATalyst to run as “administrator” prevents potential performance issues.

To change the compatibility properties:

1. Right click the Case CATalyst shortcut and select **Properties** in the drop down menu. The Case CATalyst Version 17 Properties dialog box displays.
2. Select the **Compatibility** tab.

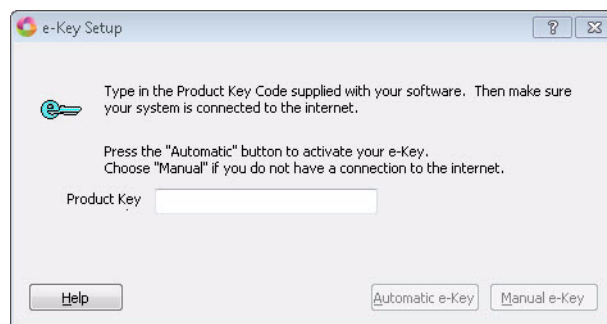
3. Under Privilege level, check the option, *Run this program as an administrator*.
4. Click the button, **Show settings for all users**.
5. The User Account Control dialog box displays. Click **Continue**. The Compatibility for all users tab displays.
6. Under Privilege level, check the option, *Run this program as an administrator*.
7. Click **OK** to close the tab and then click **OK** again to close the Case CATalyst Version 17 Properties dialog box.

## e-Key Activation

If you did not type your PKC during installation or did not have Internet access, your e-Key requires activation the first time Case CATalyst Version 17 is run following installation.

To activate e-Key:

1. Start Case CATalyst, do one of the following:
  - Double click the **Case CATalyst** icon on your desktop.
  - Click the **Start** button. From the Start Menu, select **Programs/Stenograph/Case CATalyst**.
2. The e-Key Setup dialog box displays. If the *Product Key Code* field is empty, type the Product Key Code you received via e-mail. A Registration Code field displays immediately below the Product Key field with a Registration Code. If the Registration Code field does not display, check the Product Key Code to make sure it is correct.



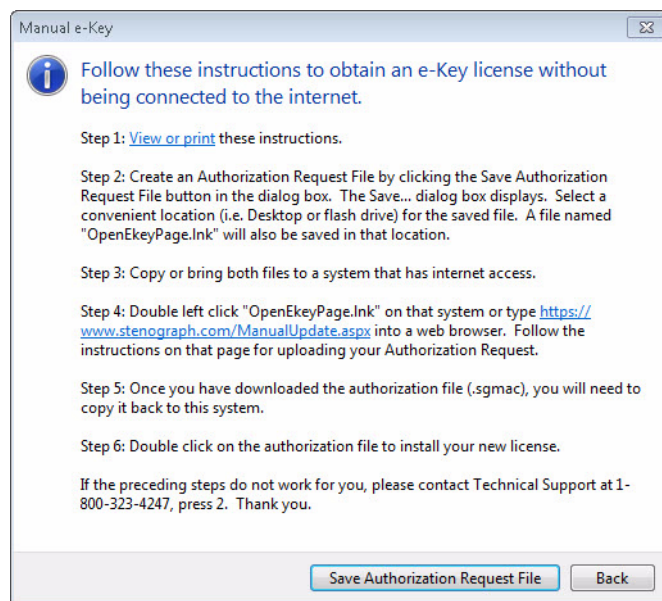
Depending on your Internet connection status, do the following:

### Internet Access

- a. Click **Automatic e-Key**. A message displays prompting you to wait. The download may take up to a minute.
- b. Once the download is complete, the Options Setup dialog box displays.
- c. Click **Finished**. Case CATalyst opens.
- d. At the Manage Jobs screen, highlight the user name you created during installation and press **Enter**.

### No Internet Access

- a. Click **Manual e-Key**. The Manual e-Key dialog box displays.



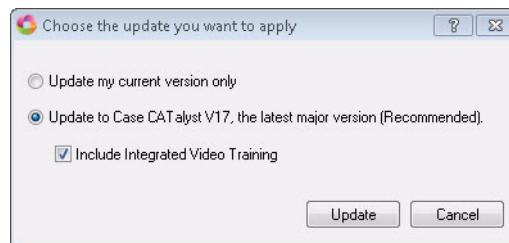
- b. Click **Save License Request File**. The Save Authorization Request To File dialog box opens to the last accessed location. Insert a thumb drive or other removable media device into the computer.
- c. Navigate to the thumb drive or removable media device and click **Save**. A reminder message displays prompting you to re-open Case CATalyst after installing the authorization file.
- d. Press **Enter (OK)** to close the reminder message. Case CATalyst closes.
- e. On a computer with an active Internet connection, insert the thumb drive or removable media device with the Authorization Request File and open the browser to:  
  
<https://www.stenograph.com/ManualUpdate.aspx>
- f. Follow the instructions on the web page to download the authorization file to the thumb drive or removable media.
- g. Return to the Case CATalyst computer. Copy the downloaded authorization file from the thumb drive or removable media device to the computer's desktop.
- h. Double click the authorization file to install it. Once the download is complete, the Options Setup dialog box displays.
- i. Click **Finished**. Case CATalyst opens.
- j. At the Manage Jobs screen, highlight the user name you created during installation and press **Enter**.



## Case CATalyst Update Installation

Case CATalyst users running Version 12.54 or higher can use the Case CATalyst, *Check for Updates*, feature to install Version 17. Your e-Key license must be updated for Version 17.

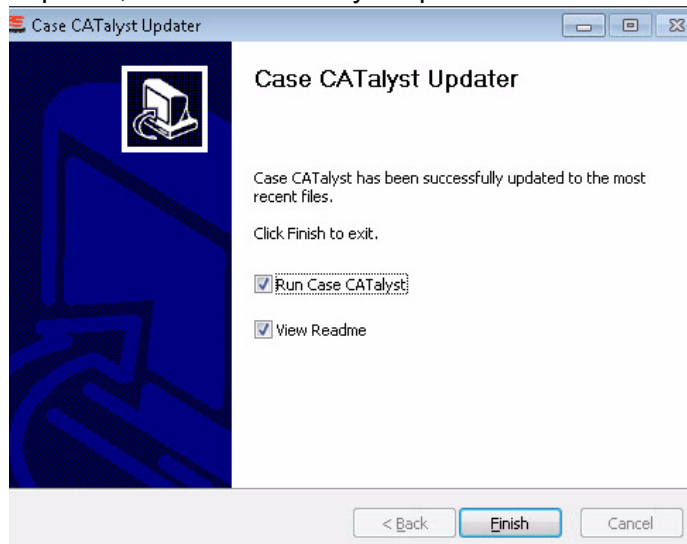
1. From Case CATalyst, select **Help/Check for Updates**. A message displays while Case CATalyst connects and checks for updates.
2. The “Choose the update you want to apply” message displays.



3. Click the **Update** button. By default, the Integrated Video Training files are selected to install with the update. Integrated Video Training includes short Essential Skills and Productivity Boosters videos. Essential Skills are designed for new users to quickly learn Case CATalyst basics. Productivity Boosters show additional advanced features. You can use the Case CATalyst option, *Create Training User*, to create a user with sample files that work in conjunction with the Essential Skills Integrated Video Training for hands-on practice.

Deselect the option, *Include Integrated Video Training*, if you do not want to copy the video files.

4. Select Update. Case CATalyst closes and updating to Version 17 begins.
5. When the update completes, the “Case CATalyst Updater is successful” dialog box displays.



6. By default, the *Run Case CATalyst* option is selected. Press **Enter (Finish)** to start CATalyst.

## Uninstall Case CATalyst Software

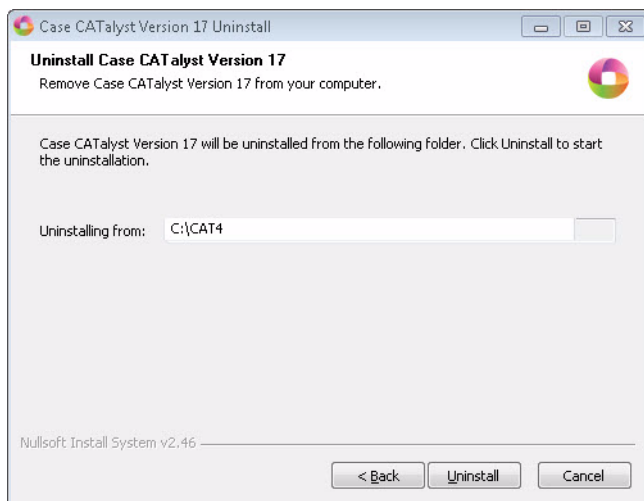
In the rare instances it is necessary to remove the Case CATalyst software, the uninstall process removes only program files, however, Stenograph strongly recommends that you back up your files before removing the Case CATalyst software. From the Case CATalyst Manage Jobs screen, press **Ctrl + b (Tools/Backup)**. Check the box next to your user name to backup all your files. For additional Backup information refer to the Case CATalyst Help.

Complete the following steps to uninstall Case CATalyst software:

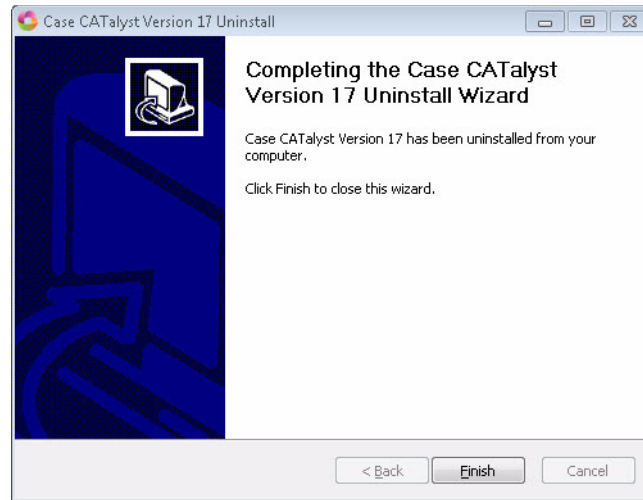
1. Start your computer. Make sure Case CATalyst is not running.
2. From the Start Menu, select **Programs/Stenograph/Uninstall Case CATalyst**.
3. At the “Welcome to the Case CATalyst Version 17 Uninstall Wizard” screen, press **Enter (Next)**.



4. At the “Uninstall Case CATalyst Version 17” screen, press **Enter (Uninstall)**. The *Uninstalling from* field reflect the current Case CATalyst installation folder. The “Uninstalling” screen displays the progress of the uninstall.



5. At the “Completing the Case CATalyst Version 17 Uninstall Wizard” screen, press **Enter (Finish)** to complete the uninstall.



6. To install the Case CATalyst Version 17 software, continue with [Installing the Software](#) on page 9.

### **Training Tools**

Case CATalyst includes an online help, an electronic user's manual and integrated training videos. The Help system, manual and training videos target the Full Version of Case CATalyst. If you installed the Edit or Student version of Case CATalyst software, some features may not exist in your version.

Additional learning aides are accessible from the Help menu. These include the ability to create a training user with Essential Skills practice files, self-study guides and specialized sample dictionaries, macros, templates and other Case CATalyst files.

#### **Online Help**

The Case CATalyst Help, including the CATalyst BCS and CATalyst VP Help, is accessed from the Help menu, by pressing **F1** or by clicking **Help** in a dialog box. CATalyst BCS and CATalyst VP are optional programs.

#### **Manual**

The Case CATalyst Manual, in PDF format, is available from the Help menu. The Case CATalyst manual also contains information for the optional CATalyst BCS and CATalyst VP programs.

#### **Integrated Video Training**

Case CATalyst integrated video training, accessible from the Help menu, includes short video lessons on select Case CATalyst features. Essential Skills training videos provide instruction on basic steps necessary to produce a transcript, conduct dictionary and file maintenance, modify page layout settings and create include files. Additional video modules, Productivity Boosters, provides training on Case CATalyst features beyond the basics such as compressing and e-mailing job files, Seating Chart setup, modifying global definitions and using the Cat Scratch pane.

When you select *Typical* installation, the Case CATalyst training videos automatically install onto the hard drive of your computer when Case CATalyst software installs. When *Custom* installation is chosen, the training videos install on your computer hard drive only when the *Install Integrated Video Training* option is selected to install with the Case CATalyst software.

#### **Create Training User**

The Create Training User feature, available from the Help menu, automatically creates a new user with the name, "Training," followed by the current user name. For example, you are in the user "Mike" and select *Create Training User*. Case CATalyst creates the user, "Training Mike," and automatically opens the user. The training user contains sample files for hands-on practice to accompany the Essential Skills Integrated Video Training.

#### **Command Summary Cards**

The Command Summary Cards, available from the Help menu, provide quick reference to Case CATalyst or CATalyst BCS default keyboard commands. There are basic, intermediate and advanced level cards. All Command Summary Cards display in PDF format with the ability to create printed copies. You can open the cards and switch the display between the cards and Case CATalyst by pressing Alt + Tab.

### ***Personal Command Summary Cards***

You can also view and/or print Command Summary Cards based on your keyboard map assignments. If you are in a keyboard map, simply select View, Personal Command Summary Card and select the level of card you want to view. As an alternative, from the Help menu you can select Personal Command Summary Cards, select the card level and then select the keyboard map. Your Personal Command Summary Card opens in your Internet Browser.

When printing the Personal Command Summary Cards from your browser, it is best to select Landscape as the Print Orientation.

### ***Self-Study Guides***

The Case CATalyst self-study guides, accessible from the Help menu, can assist you in learning how to use basic Case CATalyst skills and other Case CATalyst features. These guides, in PDF format, include:

**AudioSync Self-Study Guide** - Learn how to set up and use AudioSync to create a synchronized audio (.wav) of realtime sessions. The guide covers using AudioSync with Case CATalyst Version 17; using AudioSync On The Go with the Luminex™, Diamante®, élan Mira A3® or the Stentura® Fusion; and working with audio files recorded on another device.

**Automatic Indexing Self-Study Guide** - Learn the Indexing format symbols and how to create customized index pages for your transcripts using the Build Index feature.

**Basic Realtime Self-Study Guide** - Discover the basics of realtime translation, including setup and how to make use of Case CATalyst features to improve realtime translation accuracy.

**Fields Self-Study Guide** - Gain an understanding of how fields can help to quickly and efficiently insert information for standard pages, parentheticals, headers and footers.

**Essential Skills Self-Study Guide** - Learn the essential skills of transcript production and file maintenance.

**Index Template Wizard Self-Study Guide** - Learn to use the Index Template Wizard feature to create customized index templates for use with the Build Index feature.

**Number Conversion Self-Study Guide** - Learn how the Case CATalyst Automatic Number Conversion feature and number conversion definitions can help convert combinations of numbers and words such as time, dates, addresses and measurements to a specific format.

**Speaker Features Self-Study Guide** - Learn to identify speakers before and during translation using the EZ Speakers Dictionary; easily add and modify speakers in Edit using the Speaker List; and take advantage of the Seating Chart during Realtime.

### ***Exceptional Extras***

The Case CATalyst Exceptional Extras, available from the Help menu, include step-by-step instructions along with keyboard maps, dictionaries, macros and index templates to assist you in effectively taking advantage of features beyond the basic. All instructions are in PDF file format.

### Sample Voice Files

Sample voice files, designed to assist you in getting started with basic CATalyst VP features and transcript production, are available for download from the Stenograph Solution Center. You can use these sample files in CATalyst VP, making any necessary individualized modifications. To use the files, download the SampleVoiceCommands.zip file and restore the contents to your Case CATalyst user. See below for instructions.

The sample files contained in the SampleVoiceFiles.zip include: UserLayout.SGCUL, Sample 1 VoiceCommands.sgvcd and Sample 2 VoiceCommands.sgvcd and VP Keyboard.sgkbd.

The Sample Voice Files Document, in PDF format, provides information about the files and how to use them.

#### Copying Sample Voice Files

1. Make sure you have an internet connection and open Case CATalyst to your user name and click Help and then Support Help Desk. Stenograph's Solution Center Home page displays.
2. At Stenograph's Solution Center, click the Downloads button, select Case CATalyst and then click the Sample Voice Files.zip. The file automatically begins downloading to your Download folder.
3. Once the file is downloaded, close the Stenograph Solution Center.
4. At Case CATalyst's Manage Jobs, press **Ctrl + r** (Restore).
5. In the Restore dialog box, click the Browse button, navigate to the Downloads folder and highlight the **Sample Voice Files.zip** and click **Open**.
6. In the Restore dialog box, the following files default to the locations listed. To begin the restore, click **OK**.
  - **UserLayout.SGCUL** - System Files case.
  - **Sample 1 VoiceCommands.sgvcd** - System Files case. A sample voice dictionary can be renamed, **Personal VoiceCommands.sgvcd**, for use with CATalyst VP only. CATalyst VP automatically uses this dictionary during voice translation. The dictionary name must be, *Personal VoiceCommands.sgvcd* and reside in the System Files case for CATalyst VP to use it automatically. You can also create a new voice dictionary with the name, Personal VoiceCommands.sgvcd.
  - **Sample 2 VoiceCommands.sgvcd** - System Files case. This sample voice dictionary can be renamed, **Personal VoiceCommands.sgvcd**, for use with CATalyst VP only. CATalyst VP automatically uses this dictionary during voice translation. This dictionary must be named, *Personal VoiceCommands.sgvcd* and reside in the System Files case for CATalyst VP to use it automatically. You can also create a new voice dictionary with the name, Personal VoiceCommands.sgvcd.
  - **VP Keyboard.sgkbd** - System Files case. Keyboard maps must reside in the System Files case.
  - **Sample Voice Files Document.pdf** - the main level of your user. This document provides information and use regarding the contents of the Sample VoiceCommands dictionaries.
7. The files begin restoring, if there is an existing file with the same name you will be prompted to overwrite the existing file or not. Read the Sample Voice Files Document for more information about the sample files.

# Configuration

Once you complete the Case CATalyst installation, you may want to import your dictionary. This chapter explains how to change users, import your dictionary and how to add delete and flush strokes to your dictionary.

## Changing Users

To change to another user directory, do one of the following:

- From the User Level, in the Manage Jobs screen double click the user name.
- From within a user directory, return to the User Level screen. In Manage Jobs, press **Alt + t, s** (**Tools/Users Level**) and double click the user name.

## Convert Dictionaries

To use a dictionary created in another CAT software program, it may be necessary to export the dictionary from the other CAT system to import it into Case CATalyst. You can import dictionaries in Case CATalyst Version 3.x format, Premier Power format, dictionaries converted to RTF/CRE or dictionaries converted to Stentura format.

When importing a backed up Case CATalyst Version 3.x dictionary, use the Restore feature. If the Case CATalyst Version 3.x dictionary is not backed up, use the Import function.

If you sent your dictionary to Stenograph to be converted, use the instructions included with your converted dictionary to restore it into Case CATalyst.

1. Sign on to the user name in which you want to import the dictionary.
2. Press **Alt + u, i** (**Function/Import**) to display the Import dialog box.
3. In the *Import Source* field, select the type of import:
  - **Case CATalyst 3.0** — If the Case CATalyst Version 3.x dictionary is backed up, use the Case CATalyst Restore function.
  - **RTF/CRE** — Select RTF/CRE if the dictionary has been exported to RTF/CRE format and has a “.RTF” extension.
  - **Stentura dictionary**
  - **Premier Power** — If possible, Stenograph recommends that you optimize your dictionary in Premier Power before importing it.
4. Confirm that the *Import From* field displays the location of the dictionary you want to import. If it is incorrect, select the **Browse** button to locate the correct source location. If the file is on diskette, make sure the diskette is in the diskette drive.

5. To display only dictionaries in the current location, in the *Files of Type* field, click the **Down Arrow** to make your selection.
  - **RTF/CRE Dictionary Files** — Import a RTF/CRE formatted dictionary.

When importing an RTF dictionary from Eclipse software, Case CATalyst may prompt you to import the AI (artificial intelligence) information. Selecting Yes, imports the information and stores it in the Case CATalyst SecondChoice database which is used for CATalyst's Second Choice conflict resolution. Second Choice conflict resolution option is available on the Input tab of the Translate Options dialog box.
  - **Case CATalyst 3.0 Dictionary Files (\*.dct)** — Import a Case CATalyst Version 3.x dictionary.
  - **Stentura Dictionary** — When importing a Stentura dictionary no file selection window displays so no *Files of Type* field is available. You can choose to import the JDEFINES.JOB Stentura job dictionary. For more information on the JDEFINES.JOB dictionary, see your Stentura documentation.
  - **Premier Power Dictionary Files (\*.dct; \*.job)** — Import a Premier Power dictionary.
6. Use one of the following methods to select dictionaries.
  - **Select an individual dictionary** — Highlight the dictionary.
  - **Select consecutive dictionaries** — Press and hold **Shift** and click the first dictionary in the list you want to select. Move your cursor to the last dictionary you want to select and click it. Release Shift. All dictionaries between the first and the last dictionary selected are chosen for import.
  - **Select non-consecutive dictionaries** — Press and hold **Ctrl**. Click each dictionary you want to select and then release Ctrl.
8. Case CATalyst defaults to keeping the original name of the dictionary when importing. Select **OK** to begin the Import process.

If you import an RTF/CRE dictionary created by Cheetah TurboCAT, the following message displays:

***The dictionary dictionaryname.rtf was exported by TurboCAT.  
Please select whether this was from TurboCAT or by CAPtivator™.  
Use my selection for all other dictionaries I'm importing right now.***

<b><i>TurboCAT</i></b>	<b><i>CAPtivator</i></b>
------------------------	--------------------------

Select the type of dictionary. Your selection determines how Case CATalyst imports specific dictionary entries concerning format symbols for captioning.

If you are importing your Personal Dictionary, be sure to save it in the System Files case and name it Personal Dictionary. If you deselected the *Keep same filename as original system* option, a Save As dialog box displays for you to name each selected dictionary.

9. When the import completes, a message box displays confirming the number of files imported.



## Add Delete and Flush Strokes to Dictionaries

Case CATalyst and CATalyst BCS do not have a preset delete stroke. After importing your dictionary, add your entry for a Delete stroke, such as \* (asterisk) and a Caption Flush stroke, such as, the pound sign followed by an asterisk (#\*) for CATalyst BCS.

If you import a Case CATalyst Version 3.x dictionary that contains the {Delete} entry, the delete stroke entry already exists in your Case CATalyst dictionary.

To define your Delete and Flush strokes:

1. At the Manage Jobs screen, highlight the dictionary to which you want to add the delete stroke and press **Enter**.

Stenograph recommends adding the strokes to the Personal Dictionary. Your Personal Dictionary is stored in the System Files case. Double click the **System Files** case and then double click **Personal Dictionary**.

2. Once the dictionary opens, press **Ctrl + i (Edit/Insert)** to display the Insert dialog box.
3. In the *Steno* field, type the steno for the delete stroke.
4. In the *Text* field, press **Alt + f (FS)** to display the list of Format Symbols.
5. Use the arrow keys to locate and highlight the translate command, **{Delete}**.
6. Press **Enter** to insert the {Delete} command into the *Text* field.
7. Click **OK**. Define any additional {Delete} strokes as necessary.

To define two asterisks as a paragraph, in the *Steno* field type two asterisks separated by a forward slash (\*/\*). In the *Text* field, press **F4 P** to insert the <Continuation Paragraph> format symbol.

If applicable, define any steno outlines used to force text to the encoder using the format symbol, **<Caption: Flush>** in the *Text* field.

8. When finished inserting entries, click **Cancel** to exit the Insert dialog box.
9. Press **Ctrl + F4 (File/Close)** to exit the Manage Dictionary function. At the Save Changes prompt, select **Yes** to save the new entries.



# Troubleshooting

## Error Messages

If you encounter problems or receive error messages when using Case CATalyst, CATalyst BCS or CATalyst VP, refer to the following information to discover the possible causes of the problem and what you can do to fix them. You might also want to check Case CATalyst Help for error messages.

**Case CATalyst is not activated yet, to finish the activation process, please run Case CATalyst.**

1. You need to activate your e-Key. Your personal PKC (Product Key Code) was sent to you via e-mail. Run Case CATalyst and type your PKC in the Product Key Code field. Once a valid PKC is entered, the Registration Code field will automatically fill in.
2. Click **Automatic e-Key** if you are connected to the Internet. If you do not have an Internet connection, select **Manual e-Key** and follow the on-screen instructions.
3. Complete the remaining steps for activation. See *e-Key Activation*, [Step 2](#) on page 15.

### **e-Key Setup dialog box**

The e-Key Setup dialog box is empty after installing Case CATalyst V17.

#### **Action**

1. Your e-Key needs activation after installing Case CATalyst V17. Your personal PKC (Product Key Code) was sent to you via e-mail Type you PKC in the Product Key Code field. Once a valid PKC is entered, the Registration Code will automatically fill in..
2. Click **Automatic e-Key** if you are connected to the Internet. If you do not have an Internet connection, select **Manual e-Key** and follow the on-screen instructions.
3. Complete the remaining steps for activation. See *e-Key Activation*, [Step 2](#) on page 15.

**Case CATalyst appears to be open. Please close all instances of Case CATalyst and click Retry to continue with the installation.**

1. A version of Case CATalyst is open and needs to close before you can continue with the installation. On the taskbar, click the Case CATalyst icon and close it.
2. Click Retry to continue with the install.

### **Archive Not Created by CATalyst**

The file you are attempting to Restore is not a Case CATalyst backup.

#### **Action**

Extract the files using the original compressing program or try extracting the files using WinZip® or Windows compressed folders.

### ***Auto recover file, filename, exists for this transcript***

Translate and Edit or Edit was terminated abnormally while this file was in use.

#### ***Action***

Auto Recover has saved a copy of the transcript up to the most recent auto save due to the abnormal termination in Edit. Double click the file name of the job you were working on to open the transcript. CATalyst will rename the recovered file to the same name as the original file. You will be prompted that the file name of the job you were working on is available with the original name followed by \_Original1.

To change your Auto Recover settings, in Edit select **Tools/Options/Auto Recover**.

### ***Exception 3***

Exception 3 errors occur anytime a Windows GPF (General Protection Fault) error would normally occur. The Exception 3 error gathers detailed information about the GPF and creates a file and stores it in the Support Info Files case within the System Files case.

#### ***Action***

Press **Enter (OK)** to save the Exception 3 error information. Note your actions, step-by step, at the time of the error. If possible, contact Technical Support when the exception 3 error occurs. Technical Support will ask you to send the generated Exception 3 error file and possibly the file you were working with at the time of the error.

To send the exceptions file to Stenograph, use the Zip & e-mail feature available from Manage Job's File menu. Be sure to check the box, **Include Support Info Files** to automatically add the exception file to the zip file. Please include your name and customer number in the body of the e-mail.

### ***Cannot update Case CATalyst Software***

Updater errors include the inability to connect to the Internet when attempting to update Case CATalyst software using the Check for Updates feature or the Case CATalyst Updater; an unexpected error while attempting to update using Check for Updates or the Updater; or unable to access Case CATalyst software after updating via Check for Updates or the Updater.

#### ***Action***

There are several possible causes for an update error.

- Reboot your system and try again. Try running Check for Updates or the Updater before accessing any other program.
- Check the Stenograph Help Desk at [www.stenograph.com](http://www.stenograph.com) for step-by-step instructions.
- Contact the Stenograph Help Desk or Technical Support.

### ***No captions display on the television (BCS)***

No captions may result from an incorrect encoder selection or when an external USB modem is used.

#### ***Action:***

- Check the current Profile to confirm an encoder is selected.
- Try an internal modem or another external serial modem.

**Cannot connect encoder or TV screen displays odd characters or garbage (BCS)**

No captions or odd characters may result from an incorrect encoder selection.

**Action:**

- Check the current Profile to confirm the correct encoder is selected. If a particular encoder is not listed in BCS, it is best to choose EEG compatible rather than SmartEncoder.

**Experiencing line drops (BCS)**

Line drops may result from an incorrect or too fast Baud rate setting.

**Action:**

Change the Baud rate setting to 1200 on both the sending and receiving systems.

**CATalyst BCS cannot dial out and connect to the encoder when starting a session (BCS)**

The Profile does not have an encoder selected or the telephone line is not available.

**Action:**

- Verify the line on which you are dialing out is not in use.
- Check the current Profile to confirm an encoder is selected. If *None* is listed, CATalyst BCS does not dial out.
- Check your setting with those provided by the television station. These settings include the encoder type and modem number with area code.
- If the telephone line has a Call Waiting feature, add \*70 to the phone number in the Profile. This temporarily disables call waiting during transmission. For example, \*70,6302791847.

**Encoder not receiving captions (BCS)**

An incorrect Parity setting can prevent the encoder from receiving caption text even when an established modem connection exists.

**Action:**

Verify specific Parity instructions with station. If specific Parity settings are not available, try the following settings:

- *Parity: None*
- *Stop bits: 1*
- *Data bits: 8*

## ***Stenograph Technical Support***

### ***Stenograph On-line Help Desk***

Stenograph On-line Help Desk provides a searchable database of on-line documents to assist you in troubleshooting. You can access the On-line Help Desk at: [www.stenograph.com/Support/Helpdesk](http://www.stenograph.com/Support/Helpdesk)

### ***Technical Support Representatives***

If you need additional assistance with Case CATalyst, contact our Technical Support Representatives at:

***1.800.323.4247 or 1.630.532.5100 and then press 2***

*Monday through Friday*

*8:00 a.m. to 6:00 p.m. (Central Time)*

*Excluding Stenograph holidays*

*Hours are subject to change.*

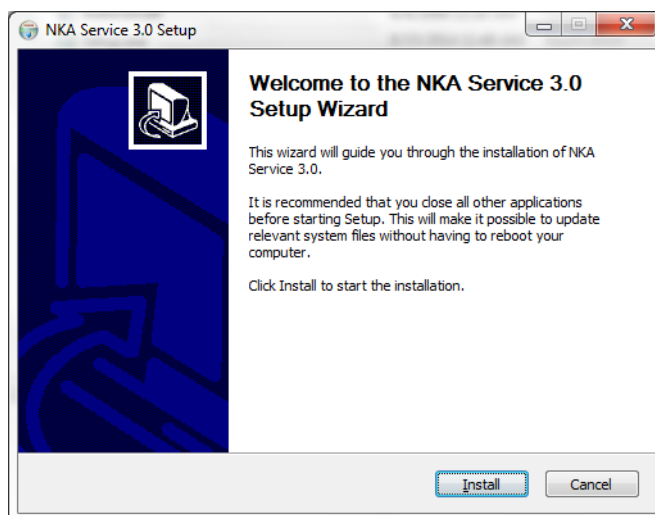
## Network Keyless Access

Case CATalyst Network Keyless Access (NKA) is designed to give workstations access to Case CATalyst Version 17 via e-Key. NKA is only available in specific situations. CATalyst NKA runs as a service. If you are loading Case CATalyst on the server for the first time, Stenograph suggests you load the Case CATalyst NKA before loading Case CATalyst. Network Keyless Access e-Key authorization can be obtained during Stenograph's business hours, Monday - Friday, 8:00 a.m. - 6:00 p.m. CT, excluding company holidays.

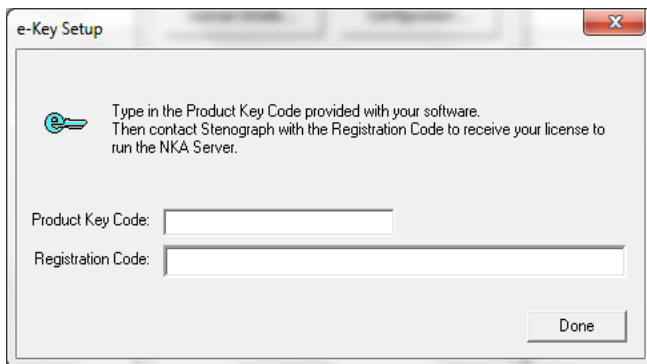
If you are replacing a previous Network Keyless Installation, see [Uninstalling Network Keyless Access](#) on page 35.

### Installing Network Keyless Access

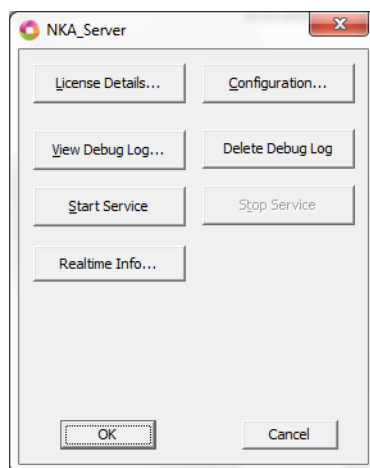
1. On the server, extract the contents of the NKA\_3.0Setup zip file to the desktop. Double click the NKA\_3.0 folder and then double click the Setup.exe. The Welcome screen displays.



2. To continue, press **Enter** or click Install. The installation begins, the e-Key Setup dialog box displays. Type the PKC you were supplied with in the Product Key Code field. Capitalization doesn't matter and you do not need to type dashes. The Registration Code field automatically populates. **If this is your first time installing NKA 3.0 and you were not supplied an NKA e-Key, please send an e-mail to [NKA@stenograph.com](mailto:NKA@stenograph.com) that includes your customer number. NKA Support can be obtained during Stenograph business hours, Monday - Friday, 8:00 a.m. - 6:00 p.m. CT, excluding company holidays.** Highlight and copy the Registration Code and go to Step 3.



3. To obtain access to Case CATalyst, send an e-mail to [NKA@stenograph.com](mailto:NKA@stenograph.com). Include your customer number and the pasted Registration Code. NKA authorization can be obtained during Stenograph's business hours, Monday - Friday, 8:00 a.m. - 6:00 p.m. CT, excluding company holidays. **Leave this dialog box open. You will receive an e-mail from NKA@Stenograph.com with a .sgmac attachment that is tied to the registration code you sent.**
4. When you will receive an e-mail from Stenograph with a \*.sgmac file attachment, save the attachment and drag it over the e-Key Setup dialog box and release the mouse button and then click Done.
5. The Completing the NKA Server 3.0 Setup Wizard dialog box displays in the background and the NKA Server dialog box displays in the foreground. In the NKA Server dialog box, click the **Start Service** button.



6. At the Completing the NKA Server 3.0 Setup Wizard dialog box, press **Enter** or click Finish.

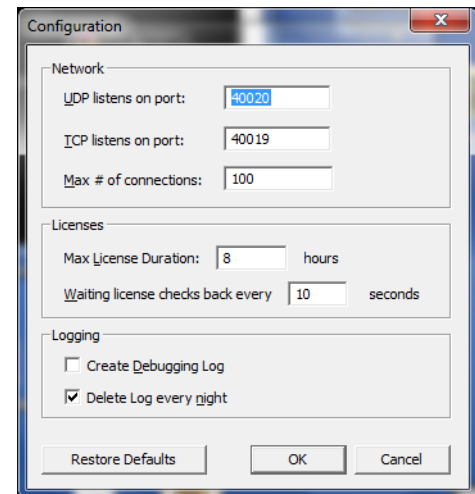
## NKA Server

The NKA Server dialog box is the interface for configuring NKA. Once the NKA service has been installed, the NKA Server dialog box is available from the Start Menu. Depending on the current state of the service, some options may not be available.



**Configuration...** displays the Configuration dialog box and allows you to configure NKA.

- *UDP Listens on Port* option should not require any modification and should be left at the default setting unless otherwise directed by Stenograph's Technical Support Department.
- *TCP Listens on Port* option should not require any modification and should be left at the default setting unless otherwise directed by Stenograph's Technical Support Department.
- *Max Number of connections* option may require modification depending on the number of licenses (workstations) active at one time. For example, if you have a small number of workstations running at one time, i.e. 25, you may want to reduce the default number 100 to 50. If you have more than 100 workstations running at one time, you would want to increase the default number 100 to perhaps 150.
- *Max License Duration* option allows you to set the maximum time a license can be used/held at one time by a client. The default setting is 8 hours. The maximum is 72 hours. If a client has held the license for more than the allotted time and there are other clients waiting for a license, the current client's license will be suspended and the client will be added to the waiting list.
- *Waiting license check back every* option allows you to set how often the NKA service checks for available licenses to become available. The default setting is 10 seconds.
- *Create debugging log* option should only be selected if the NKA service is not operating correctly and Stenograph's Technical Support Department has instructed you to select this option.
- *Delete logging every night* option automatically deletes the debugging log nightly.
- *Restore Defaults* option sets the configuration options back to the original (default) settings



**License Details** displays the *Enter NKA number to enable the license server* dialog box. If you have not obtained a NKA number, you need to obtain the NKA number in order to activate the service.

**View Debug Log** displays the Debug log if NKA is configured to run in Debug. It is only necessary to select Create debugging log if the service is not operating correctly and requested by Stenograph's Technical Support Department.

**Delete Debug Log** allows you to manually delete the debug log..

**Start Service** option is available if the NKA service is not running. If the service is running, this option is grayed out.

**Stop Service** option is available if the NKA service is running. If the service is not running, this option is grayed out.

**Realtime Info** displays how many licenses are currently being used.

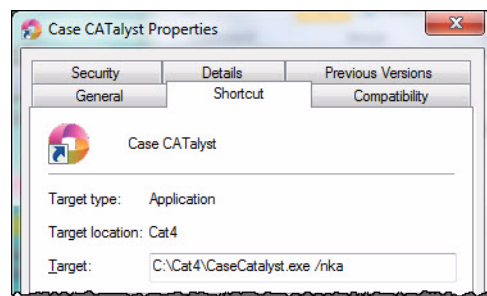
**OK** when you are finished configuring the NKA service.

### Things to know

- When the Case CATalyst NKA Server dialog box is displayed, click the Case CATalyst icon in the upper left hand corner and select About Case CATalyst NKA Server... The current version along with the Command Line Switches display.
- To install Case CATalyst Version 17, download the Version 17 setup.exe by going to [www.stenograph.com](http://www.stenograph.com), click Support, then Downloads.
- For information on workstation setup, see [Workstation Setup](#) on page 44.

### Running Case CATalyst for the first time

Once you have installed Case CATalyst, on the Shortcut tab of the Case CATalyst icon properties, add /NKA at the end of the Case CATalyst path to instruct Case CATalyst to look for the server.

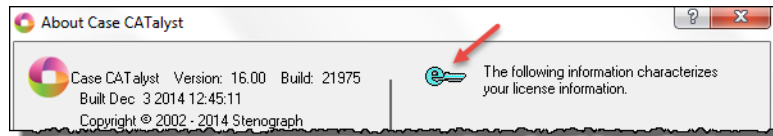


If the server is going to offer more than one license type, it will be necessary to include the options you want for each license type in the Case CATalyst path following /NKA. There are three main license types: Student (s), Full (f) and Edit (e). To specify the license type, after the /NKA you must include one of the following: s, f or e. For example, if you server has a full license and a student license, you need to create two shortcuts. One shortcut path would indicate /NKA f for the Full system and the other path would indicate /NKA s for the Student version. Along with the three license types, other parameters are available: CATalyst BCS (b), AudioSync (a) and Voice (v). For example, if your server offers both a Full version with AudioSync and a Student version with CATalyst BCS, one shortcut path would indicate /NKA fa for Full with AudioSync and the other shortcut path would include /NKA sb (Student with CATalyst BCS).

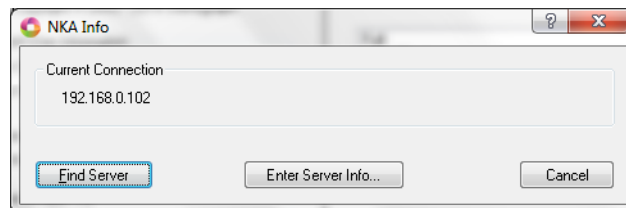
The first time you start Case CATalyst, Case CATalyst will look for the NKA server. If found, Case CATalyst will start. If the NKA server is not found, the NKA Settings dialog box displays where you can manually type the server address.

### About Case CATalyst NKA

To see NKA server information, in Case CATalyst click Help, About and then double click the e-Key icon.

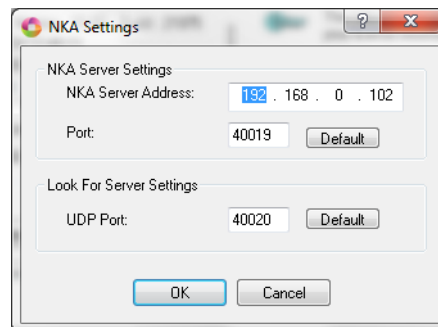


The NKA Info dialog box displays:



### ***NKA Server Not Found***

If NKA cannot locate the server, the NKA Settings dialog box displays. Manually type the IP address of the NKA server in the NKA Server Address field.



### ***Uninstalling Network Keyless Access***

It is important to stop the NKA service before uninstalling NKA. To stop the NKA service, do the following:

1. Open the License Server Helper application.  
Click **Start, All Programs, Stenograph, Case CATalyst License Server Helper**.
2. In the Case CATalyst NKA Service Helper dialog box, click **Stop Service**.
3. Click **Close**.

With the NKA service no longer running, the NKA service can be uninstalled. Do the following:

1. Access Programs and Features inside Control Panel.  
Click **Start, Control Panel, Programs and Features**. In the list of installed programs, double click

Network Keyless Service 3.x. At the *Are you sure you want to completely remove Network Keyless Service 3.x and all of its components?* prompt, click Yes.

2. The *Network Keyless Service 3.x was successfully removed from your computer* message displays. Click **OK**.

# Update Case CATalyst Software

Updating Case CATalyst program files ensures the best results from your Case CATalyst software. Stenograph recommends using the Case CATalyst, *Check for Updates*, feature approximately once a month to check for updates to the Case CATalyst program files. When selected, Check for Updates automatically connects to a special Stenograph internet site that compares your Case CATalyst program files against the most current files. If your program files are not current, you are prompted to install the new program files directly onto your computer.

An active Internet connection is required to update Case CATalyst software. If you do not have an Internet connection on the Case CATalyst computer, you can download the Update files to a memory stick or flash drive using another computer connected to the Internet and then install them to the Case CATalyst computer.

Case CATalyst displays an Update Reminder message if the, *Check for Updates Enabled*, option is active and you have not used the *Check for Updates* feature within 60 days of installing your current software version. When the Update Reminder message displays, you can choose check for an update or select another reminder time. The reminder time increments are: Tomorrow, Two Days, Three Days, One Week, Two Weeks, One Month, Two Months, Three Months.

## Update Case CATalyst Program Files

The Application/Computer Option, *Check for Updates Enabled*, must be active to display the Check for Updates feature on the Case CATalyst Help menu. You can use the Check for Updates feature any time.

### **Check for Updates**

1. From Case CATalyst, press **Alt + h, u (Help/Check for Updates)**. Case CATalyst begins checking for updates.
2. If an update is available, a message displays prompting you to update the software. Select **Yes**.
3. Case CATalyst automatically closes and the program files install.

The update must completely finish installation before any of your system files are updated. If you lose connection to the Case CATalyst web site before the update completes, your current version is not modified. When you reestablish connection, and use the Check for Updates feature, the update continues from the point the connection was lost.

4. When installation completes, the Case CATalyst Updater screen displays. By default, the option to run Case CATalyst when finished is selected.
5. Click **Finish** to close the dialog box.

Any existing application files replaced by the update are stored in the Case CATalyst folder within the subfolder, *SGUpdateBackup*. The Case CATalyst folder is the location where Case CATalyst is installed, such as CAT4.

## Downloading the Update

Case CATalyst provides the option to download the CaseCATalystUpdate.exe file for transfer to a computer without internet access. Stenograph recommends that you download the file directly to the Windows desktop, memory stick or flash drive for transfer to another computer. Downloading directly to a memory stick or flash drive may significantly increase the download time.

### Copy the **SGDLUpdate.exe** file

1. On the Case CATalyst computer, using Windows Explorer or My Computer, navigate to the folder where Case CATalyst is installed. This is often the CAT4 folder.
2. Locate the **SGDLUpdate.exe** file. Depending on your Windows settings you may not see the ".exe" extension.
3. Using Windows conventions, copy the **SGDLUpdate.exe** file to your flash drive or memory stick.
4. Remove the flash drive or memory stick from the Case CATalyst computer and insert it into the computer with Internet access and availability.

### Download the **CaseCATalystUpdate.exe** file

5. On the computer with Internet access and availability, establish an Internet connection.
6. Make sure all applications are closed.
7. Double click the **SGDLUpdate.exe** file. Depending on your Windows settings you may not see the ".exe" extension.

When active, the User Account Control (UAC), a security feature in Windows 8, Windows 7 and Windows Vista, prompts you for permission to allow the Case CATalyst update. Select **Yes** or **Continue**.

8. The Case CATalyst Version 16 Download Update screen displays. To read about changes in the software before downloading, click **Click here to view the Readme before updating!**
9. Click **Next**. The Choose Save Location screen displays. The *Destination Folder* indicates the location where the downloaded file is saved. The default is the Desktop.

If necessary, use **Browse** to identify a different location, such as the drive in which the memory stick or flash drive is located. Downloading directly to a memory stick or flash drive may significantly increase the download time.

10. Click **Download**. CaseCATalyst Update.exe downloads to the specified location. This may take a few minutes. The download speed depends on your internet connection.
11. At the Completing Case CATalyst Version 16 Download Update screen, click **Finish**.
12. Copy the **CaseCATalystUpdate.exe** to the flash drive or memory stick. When the copy is complete, remove the flash drive or memory stick from the computer.

***Install the Case CATalyst Update***

13. Insert the flash drive or memory stick into the Case CATalyst computer. Depending on your operating system, use My Computer, Computer or Windows Explorer to copy the **CaseCATalystUpdate.exe** onto the computer.
14. Double click the **CaseCATalystUpdate.exe** file. The Case CATalyst Version 16 Update Installation screen displays.  
  
When active, the User Account Control (UAC), a security feature in Windows 7 and Windows Vista, prompts you for permission to allow the Case CATalyst update. Select **Yes** or **Continue**.
15. Click **Next**. The Choose Previously Installed Location screen displays.
16. Confirm the current location of Case CATalyst. For example, C:\CAT4. If necessary, use **Browse** to locate a different directory.
17. Click **Update** to install the update. The Installing screen displays with a progress bar as the updated files install.
18. At the Completing the Case CATalyst Version 16 Update Installation screen, click **Finish**.  
  
Any existing application files replaced by the update are stored in the Case CATalyst folder within the subfolder, *SGUpdateBackup*. The *SGUpdateBackup* folder is located where Case CATalyst is installed, such as CAT4.
19. To review changes in the software, start Case CATalyst and select **Help, View Readme**.





# Network Installation

When installing Case CATalyst to any type of network or shared drive, the speed of Case CATalyst depends on the speed and efficiency of the network and how the network is configured by the network administrator or other knowledgeable network person.

Stenograph highly recommends that a knowledgeable network person is available on staff when a firm or location installs and uses a network to share applications and files. A knowledgeable network person can better optimize the performance of the network providing you with a faster more efficient system. This individual should have a professional network certification, such as MCP, MCSE, MCNE, etc. If having a certified individual on staff is not possible, Stenograph recommends consulting with a certified network professional before and after the network installation.

## Network Setup Guidelines

Case CATalyst Version 17.x requires Windows Vista, Windows 7, Windows 8 or Windows 10 for installation on a Windows server.

- Use 100BaseT Ethernet or higher. 100BaseT is approximately 10 times faster than 10BaseT, and performs significantly better when sharing applications using very large files, such as those used by CAT programs, over the network.
- When installing more than 25 workstations on the network, use Switching at the backbone level of the network to better optimize traffic. For more information on Switching technologies and benefits, contact a certified network professional.
- Carefully configure network settings, such as IP Address and DNS entries. A slow network may result if these settings are not configured properly. For more information on these settings, contact a certified network professional.
- Use caution when loading additional third-party programs, such as anti-virus software that may create additional network traffic which can contribute to overall slowness on the network and workstations.
- Consider additional RAM memory for workstation computers to minimize swapping which can contribute to slowdowns. When you open a file located on the network drive, the file opens into the RAM on the local workstation drive. When there is insufficient RAM to hold the entire file, a portion of the file is saved to RAM and the remaining portion is swapped out and stored on the local workstation hard drive. Swapping requires repeated requests over the network for more data which could result in a noticeable slowdown. This is a general network issue, not specific to Case CATalyst.
- Initially install and maintain current version updates for your operating system. For example, load each Service Pack and patch that Microsoft releases for your Windows server operating system. Microsoft may have patches available on a regular basis.

### **Network Setup Scenarios**

Review the network setup guidelines and then review the following network installation scenarios before installing Case CATalyst on a network. Stenograph provides specific network recommendations for each situation to assist you in determining the best network setup for your office or organization:

- Install Case CATalyst and user files on the network.
- Install Case CATalyst on workstations/user files on the network.
- Install Case CATalyst on the network/users files on workstations.
- Install Case CATalyst and user files on each workstation.

#### **Auto Recover and Auto Save in Case CATalyst**

Auto Recover and Auto Save allow you to automatically save the Case CATalyst transcript file while translating and editing. Case CATalyst saves the file at the user specified time frequency.

Auto Recover, when active, creates a temporary file of the job while editing. When the user files are located on a network drive, the temporary file created while translating or editing is copied over the network. If this file is large, the cursor may change to reflect the busy state and the copying takes a longer time.

Auto Save, when active, saves the changes to the original file instead of creating a temporary file. Depending on the time frequency set for, there may be times when you cannot exit the file without saving. You may want to use the Auto Save option for more efficient processor use.

When using an Auto Recover option, Stenograph recommends setting the frequency of the Auto Recover or Auto Save time to a minimum of 5 minutes. This helps minimize potential slowdowns. For more information about Auto Recover options see the Case CATalyst Help.

### **Install Case CATalyst and User Files on the Network**

Stenograph recommends installing Case CATalyst and all user files on the network drive when using a high bandwidth network setup. A high bandwidth network uses 100BaseT or higher. Using 10BaseT is not recommended as it significantly reduces the efficiency of the network and may not provide consistent results.

For this setup, you must run the Workstation Setup on each workstation used with Case CATalyst.

#### **Backup**

This setup, when correctly configured, allows the automatic backup of user files when performing a network backup.

### **Install Case CATalyst on Workstations/User Files on Network**

Stenograph recommends installing Case CATalyst on the local drive of each workstation and user files on the network drive when using a high bandwidth network setup that carries a large amount of network traffic in addition to Case CATalyst users. For example, a large courthouse might have several non-CAT users accessing the same network on which Case CATalyst is loaded.

A high bandwidth network uses 100BaseT or higher. Using 10BaseT is not recommended as it significantly reduces the efficiency of the network and may not provide consistent results.

**Backup**

This setup, when correctly configured, allows the automatic backup of user files when performing a network backup.

***Install Case CATalyst on Network/User Files on Workstations***

Stenograph recommends installing Case CATalyst on the network drive and user files on each local workstation drive when using a smaller and slower network setup. This reduces network traffic as user files do not travel back and forth between the network and workstation. User files are opened on each workstation.

Setting up user files on a workstation is an option anytime users experience long delays opening large Edit files or large Dictionaries. To allow a user to save files to their local drive, create a new user on the C: drive of the workstation for that user.

**Backup**

This setup allows the automatic backup of user files when performing a network backup by using one of the two following options:

1. Create a “mirror” or duplicate user on the network drive. For example, you have Case CATalyst installed on the network drive H: and the SMITH user on a workstation drive. Create a new user, SMITH on the H: drive. When finished working with the SMITH user at the end of the day, copy the SMITH files from the workstation drive to SMITH on the network H: drive.
2. Use the Case CATalyst Backup feature to backup the files from the local drive of a workstation to the network drive. Using the Case CATalyst backup feature you can easily backup and restore Case CATalyst files to any drive letter, including a network drive. For more information on backup, see the Case CATalyst Help.

***Install Case CATalyst and User Files on Each Workstation***

Stenograph recommends installing Case CATalyst and all user files on the local drive of each workstation when using very slow networks or a peer-to-peer setup. This setup allows users access to all networked Windows features and printers. To share files via the network, create a “mirror” user on the network. See the following Backup section for creating a “mirror” user.

**Backup**

This setup allows the automatic backup of user files when performing a network backup by using one of the two following options:

1. Create a “mirror” or duplicate user on the network drive. For example, you have Case CATalyst installed on the network drive H: and the SMITH user on a workstation drive. Create a new user, SMITH on the H: drive. When finished working with the SMITH user at the end of the day, copy the SMITH files from the workstation drive to SMITH on the network H: drive.
2. Use the Case CATalyst Backup feature to backup the files from the local drive of a workstation to the network drive. Using the Case CATalyst backup feature you can easily backup and restore Case CATalyst files to any drive letter, including a network drive. For more information on backup, see the Case CATalyst Help.

## ***Workstation Setup***

The Case CATalyst DVD includes the workstation setup program for networks. The Case CATalyst workstation setup program installs the Stenograph RTF/CRE Shell Extensions, Infotips and PDF printer information in the correct location on the local workstation drive. It also allows you to place a Case CATalyst shortcut on the workstation's Desktop. This workstation setup is only for a Case CATalyst installation.

### ***Workstations and RAM***

Network workstations can benefit from an increase in RAM due to potential increased swapping. When you open a file located on the network drive, the file opens into the RAM on the local workstation drive. When there is insufficient RAM to hold the entire file, a portion of the file is saved to RAM and the remaining portion is swapped out and stored on the local workstation hard drive. Swapping requires repeated requests over the network for more data which could result in a noticeable slow down. This is a general network issue, not specific to Case CATalyst.

### ***Customize Workstation Setup***

Located in the Workstation folder is the file, workstation.ini. The workstation.ini file controls the workstation setup installation prompts. You can modify the contents of this file, customizing the workstation setup to your environment. Access the workstation.ini using the method with which you are most familiar.

Make changes as necessary. Type the appropriate information for each prompt following the equal sign.

#### **[InstallLocation]**

Case CATalyst=

Type the directory where Case CATalyst is installed.

#### **[InstallComponents]**

Use Job History=

Type Y to install the feature. Type N to not install the feature.

#### **[DesktopShortcuts]**

Case CATalyst=

Type Y to install a desktop shortcut for Case CATalyst. Type N to not install a desktop shortcut. No entry allows the user to select the desktop shortcuts during installation.

#### **[BeforeReboot]**

ViewReadme=

Type Y to display the Readme file after installation. Type N or leave blank to not display the Readme file.

#### **[UserInformation]**

UserRoot=

UserName=

After the equal sign for UserRoot, type the name of the UserRoot root directory. Following the equal sign for UserName, type the user name for the workstation user. No entry allows the user to enter the information during installation.

## ***Install Case CATalyst on the Network Drive***

Install Case CATalyst Version 17.x on the network drive. Complete the steps for either a Silent Install or a Regular Install.

### ***Regular Install***

1. On the network server, insert the Case CATalyst installation DVD into the DVD drive. Do one of the following:
  - If your computer is set to “autorun,” the Case CATalyst installation screen displays. Select the **Browse** option.
  - If your computer is not set to “autorun,” browse the contents of the Case CATalyst DVD to locate the Setup.exe file. Depending on your operating system, use My Computer, Computer or Windows Explorer.
2. Right click on the **Workstation** folder and select **Copy**.
3. Paste the Workstation folder on a drive accessible to all workstations. This is often the same drive where Case CATalyst is installed.

### ***Silent Install***

You can use the silent install for an individual or network installation. The silent install allows you to perform the Case CATalyst Version 17 installation using the following defaults, without prompting for any user interaction:

- Install Case CATalyst and place a shortcut on the Desktop.
- Integrated Video Training is not installed.
- The Registry is set to Use Job History.
- No user root or users are created.

When using a silent install, the installation sets the defaults and then checks the Workstation.ini file directory path. The Workstation.ini directory path supersedes path information in a command line and changes to the silent install defaults. The Workstation.ini is located in the Workstation folder on the Case CATalyst 16.x DVD. If you are modifying the Workstation.ini for a silent install, you must copy the entire Case CATalyst DVD contents to the hard drive and then modify the Workstation.ini to meet your needs. The Workstation.ini includes instructions for setting the workstation defaults.

Do one of the following:

#### ***Workstation.ini Modified***

To use the following command, you must have modified the workstation.ini file, specifying the directory path for the installation location of Case CATalyst. The installation sets the defaults and then checks the Workstation.ini file for the directory path and any changes to the silent install defaults.

1. From a command line, type the path and the install commands. The path is where you copied the contents of the Case CATalyst DVD. The command is case sensitive and specific to an individual or network installation. Use one of the following:

**setup.exe /S** (for individual installation)

**setup.exe /N /S** (for network installation)

### **Example**

c:\CATalyst16\setup.exe /N /S

2. When the installation is complete, reboot the system.

### **Workstation.ini Not Modified**

Case CATalyst uses the default instruction unless otherwise specified in the Workstation.ini. If a path is specified in the Workstation.ini, the silent install uses that path information. Use the /D attribute when you have not modified the workstation.ini file and are installing to computer where you want to specify the path.

If you are installing for a large group of workstations, it is recommended you modify the workstation.ini file to fit your needs and include the path information.

1. Insert the Case CATalyst Version 17.x DVD into your DVD drive.
2. The Case CATalyst install is set to “autorun.” At the Install Software screen, click **Exit**.
3. From the Windows Start menu, click **Run**.
4. Type one of the following commands:

d:\setup.exe /S /D=*directorypath* (for individual installation)

d:\setup /N /S (for network installation)

d:\ setup.exe /N /S /D=*directorypath* (for network installation)

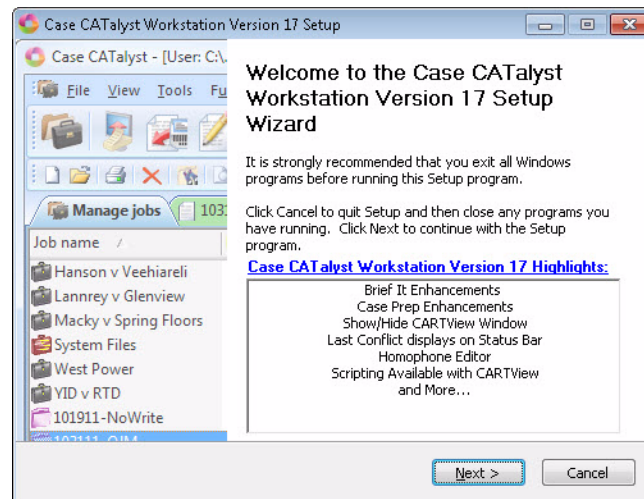
When using the /D attribute, it must be the last parameter used in the command line and must not contain any quotes, even if the path contains spaces. If installing from a drive other than d, replace the letter d in the command line with the appropriate drive letter.

5. When the installation is complete, reboot the system.
6. Remove the Case CATalyst Version 17 DVD and store it in a safe location.

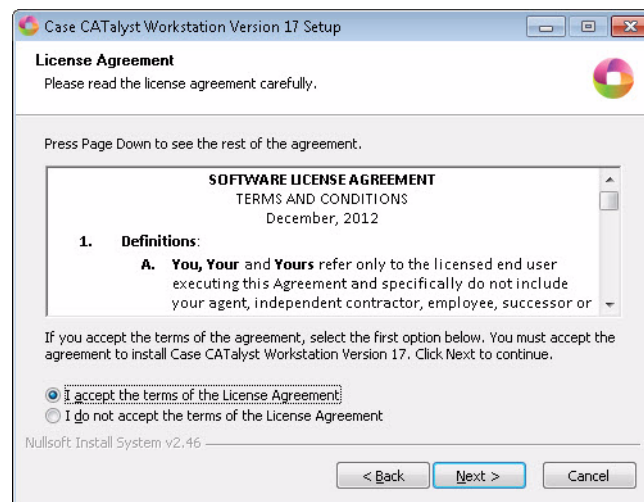
## **Run the Workstation Setup Program**

Perform the following steps on each workstation drive. The steps assume no modifications have been made to customize the wssetup.ini file which affects workstation setup. Close all Windows programs before running this setup program.

1. Open the **Workstation** folder located on the network drive.
2. Double click **Setup.exe**.
3. At the “Welcome to the Case CATalyst Workstation Version 17 Setup” screen, press **Enter (Next)**.



4. At the “License Agreement” screen, read the license information carefully. To access the entire license agreement, scroll down.
5. To accept the terms, click ***I accept the terms of the License Agreement*** and press **Enter (Next)**. The installation continues. If you select, ***I do not accept the terms of the License Agreement***, the install cancels and the installation screen closes.

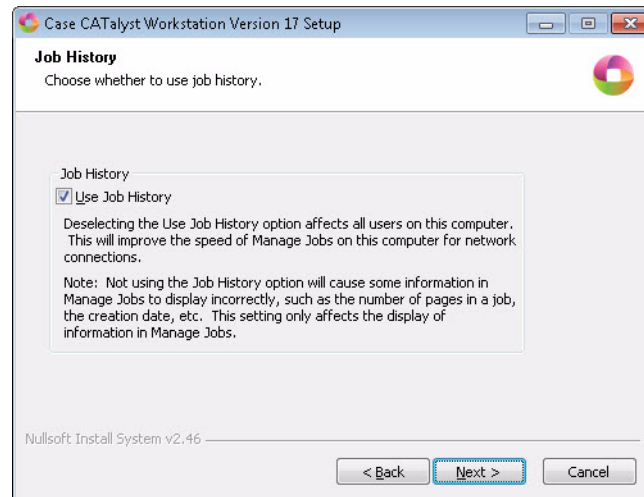


6. The “Job History” screen displays if, in the Workstation.ini file, the Use Job History entry was left empty. A Job History file contains information about a job, such as production status, creation, editing and printing dates, translation statistics and backup times. Job history data can be useful when working with a scopist and to track information such as job status and productivity progress, however, it slows the display of jobs on the Manage Jobs screen in a network environment. The selection made for the *Use Job History* option affects all users on the computer.

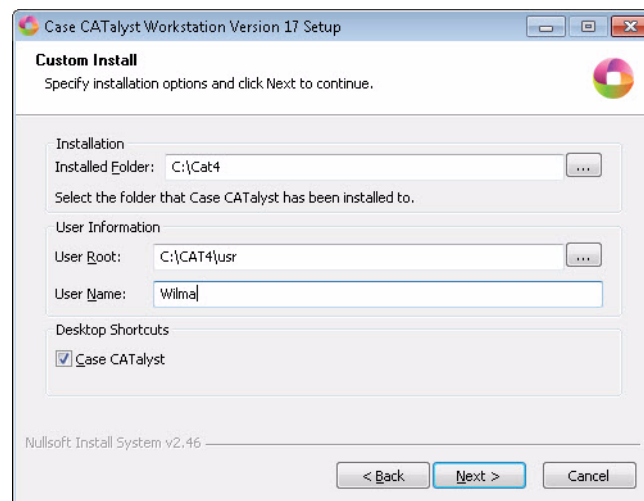
Following installation, the *Use Job History* option is accessible in Manage Jobs. Select **Tools, Options, Manage Jobs/General, Job History**.

Do one of the following:

- To use Job History on this workstation, select the option, *Use Job History*.
- Deselect the *Use Job History* option to inactivate Job History and improve the display speed of jobs on the Manage Jobs screen in a network environment.



7. Press **Enter (Next)**. At the “Custom Install” screen, choose the location, drive and folder for the Case CATalyst software installation. Optionally choose to install the Desktop shortcut, specify a User Root and User Name and display the Readme file following the install.



Make necessary entries. When finished, press **Enter (Next)**.

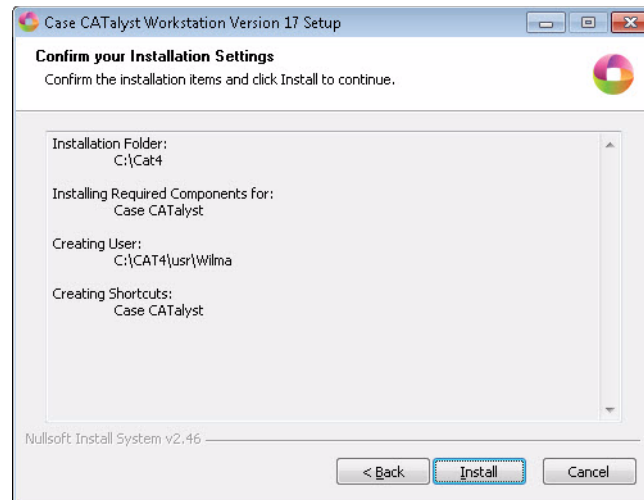
- **Install Folder** - Specify the installation location for the Case CATalyst software. Use the Browse button to navigate to the desired location.
- **User Root** - Specify the location for the Case CATalyst user files. Use the Browse button to navigate to the desired location. A user root folder is the first hierarchical level in the Case CATalyst file structure that contains user names and files. The default user root is C:\CAT4\usr. Case CATalyst requires at least one User Root folder.
- **User Name** - Specify the User name to use in Case CATalyst. It is necessary to type a user



name to continue the installation. You can add more user names, once you install Case CATalyst and access the program.

- **Desktop Shortcuts** - Check the appropriate box to create a Desktop shortcut for Case CATalyst. Adding a shortcut to your desktop allows you to start Case CATalyst by double clicking the icon.

8. Press **Enter (Next)**. The “Confirm the Installation Settings” screen displays. Review your selection and press **Enter (Next)** to begin installation.



9. The Case CATalyst software installs. The “Installing” screen displays the progress of the software installation. This may take a few minutes. Messages may display for extended periods of time until the software installation completes.

10. When the installation finishes, the “Completing the Case CATalyst Workstation Version 17 Setup Wizard” screen displays. Press **Enter (Finish)**.

