

*Stenograph Bluetooth<sup>®</sup> Wireless  
Communication Guide*



**Stenograph<sup>®</sup>**

[www.stenograph.com](http://www.stenograph.com)

Release: October 2015, August 2015, August 2010, December 2009, May 2009

Copyright 2015

All Rights Reserved. Printed in U.S.A.

This material is protected by Federal Copyright Law and is not to be copied, reproduced, stored in a retrieval system or transmitted in any form or by any means (electronic, mechanical, photocopy, recording or otherwise) without the prior written permission of Stenograph.

**STENOGRAPH PROPRIETARY:** This material constitutes proprietary and trade secret information of Stenograph, and shall not be disclosed to any third party, nor used by the recipient, except under the terms and conditions of the purchase agreement between the customer and Stenograph.

Changes may be made periodically to the information in this publication. Such changes will be incorporated in any new edition of this manual.

Stenograph is a Pettibone Company.

Stenograph, Luminex, Diamante, Wave, Case CATalyst and the Stenograph logo are registered trademarks or tradenames of Stenograph.

Bluetooth is a registered trademark of Bluetooth SIG, Inc., U.S.A.

BlueSoleil is a trademark of IVT Corporation.

Windows and Windows Vista are registered trademarks of Microsoft.

The SD logo is a trademark of Toshiba Corporation.

All other trademarks are the property of their respective owners.

# *Contents*

<b>Chapter 1: Introduction .....</b>	<b>5</b>
Compatibility Requirements .....	6
Package Contents .....	7
<b>Chapter 2: Installation .....</b>	<b>9</b>
Install the BlueSoleil Software .....	10
Install the BlueSoleil USB Adapter .....	14
<b>Chapter 3: Configuration .....</b>	<b>15</b>
Configure the Luminex .....	16
Configure the Diamante .....	18
<b>Chapter 4: Establish Realtime Connection .....</b>	<b>21</b>
Luminex .....	22
Diamante .....	24
Error Messages .....	27
Copy of BlueSoleil is Not Licensed .....	27
<b>Chapter 5: Troubleshooting .....</b>	<b>27</b>
Wireless Adapter Not Found (Diamante) .....	28
Technical Support .....	28



## ***Introduction***

Bluetooth wireless realtime communication is an optional accessory for your Luminex or Diamante. Using Bluetooth technology and specially designed software, these writing machines can communicate with Case CATalyst or other compatible CAT software running on your Windows® 7, Windows 8.x, Windows 10 and Windows Vista® notebook computer. Bluetooth communication between your writing machine and computer is secure. The encrypted data can only be transmitted between your writing machine and your computer.

## **Compatibility Requirements**

Bluetooth wireless communication works with compatible CAT software running on Windows 7, Windows 8.x, Windows 10 and Windows Vista 32-bit or 64-bit. Stenograph provides technical support for the Luminex, Diamante and Case CATalyst. For technical support on non-Stenograph CAT software, contact the respective software vendor.

A USB port on your computer is necessary to use BlueSoleil™ wireless software. Stenograph strongly suggests you set up and test all realtime hardware including wireless communication prior to using it in a realtime situation.

## Package Contents

A Wireless Realtime Kit from Stenograph includes:

- One of the following:
  - Cirago Bluetooth USB Adapter for the Diamante. The Luminex's BlueTooth feature does not require an adapter.
- BlueSoleil CD-ROM.
- BlueSoleil Bluetooth USB Adapter for the computer.
- Installation Instructions.





## *Installation*

Chapter 2, Installation, provides step by step instructions to install the BlueSoleil software and the BlueSoleil USB adapter on your Windows 7, Windows 8, Windows 10 or Windows Vista system. All screen shots in the installation instructions reflect the Windows 7 platform. Windows 8, Windows 10 and Windows Vista screens may vary slightly.

When loading the BlueSoleil software and using the Bluetooth service, the User Account Control message box displays. The User Account Control (UAC) is a security feature prompting you for permission to run the displayed program name or service being accessed. To load the BlueSoleil software and use the Bluetooth capability, you must choose **Continue** in the UAC message box. The User Account Control is an important feature of Windows. Stenograph **does not** recommend disabling the User Account Control.

### Built-In Bluetooth

If your computer has built-in Bluetooth hardware, Stenograph recommends you turn off or disable it before installing BlueSoleil software. If necessary, contact your respective hardware vendor for assistance. After the BlueSoleil software installation, Stenograph suggests you leave your built-in Bluetooth turned off/disabled.

In rare situations, the computer hardware does not allow you to turn off or disable the built-in Bluetooth. If this situation occurs, start your computer and ensure it is fully booted. Insert the BlueSoleil USB device into the computer before beginning the installation. The BlueSoleil software should recognize the BlueSoleil USB device before the built-in Bluetooth.

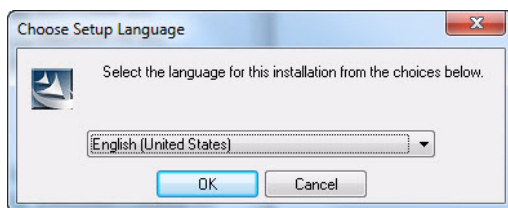
## Install the BlueSoleil Software

1. Start your computer. Make sure it is fully booted.
2. Close all Windows programs before running the install program.
3. Insert the BlueSoleil CD-ROM into the CD-ROM/DVD drive. Do **not** connect either of the Bluetooth adapters at this time. If the UAC message box displays, click Continue.

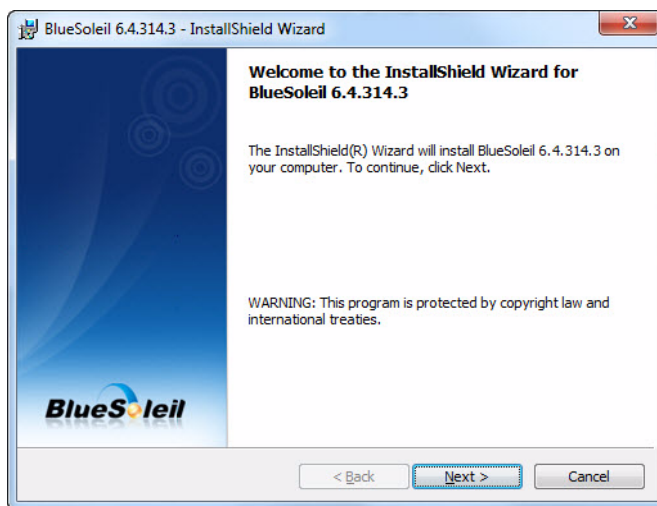
If the installation process does not begin after about a minute or your computer settings do not allow for “auto run” or “auto play”, you can initiate the installation process manually. From the Windows Start menu, select **Run**. On the Command line, type **d:\setup** and then press **Enter**. If your CD-ROM or DVD drive is designated by a letter other than “d,” substitute the appropriate letter in the command line.

Windows 7 and Windows Vista users who want to initiate the installation process manually, may need to add the Run command to the Start menu. Right click the Start menu and select **Properties**. Select the Start Menu tab and click **Customize**. Check **Display Run** and click **OK**. Click **OK** again to close the Taskbar and Start Menu Properties dialog box.

4. The Choose Setup Language screen displays.



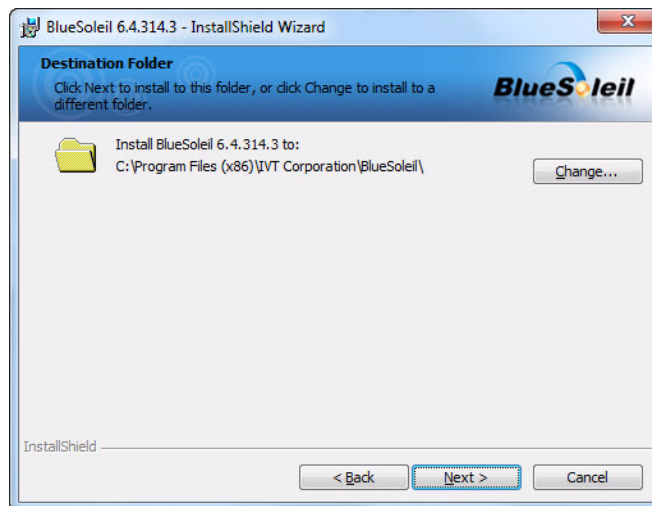
5. Press **Enter (OK)** to begin the software installation.
6. The Preparing to Install screen displays briefly followed by the Welcome to the InstallShield Wizard for BlueSoleil screen.



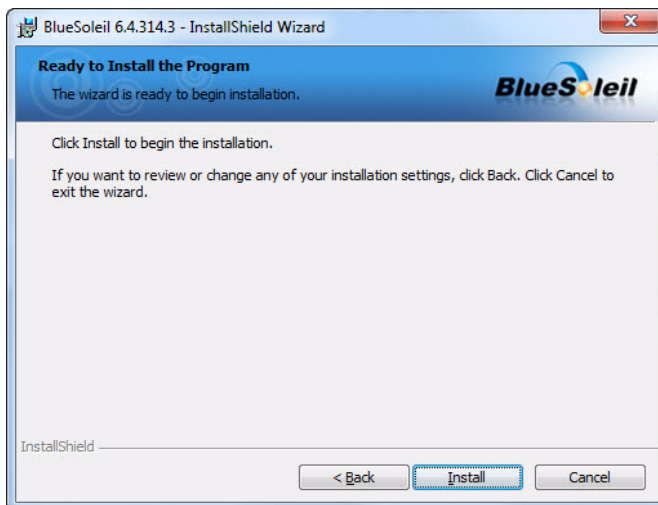
7. Press **Enter (Next)**. The License Agreement screen displays.



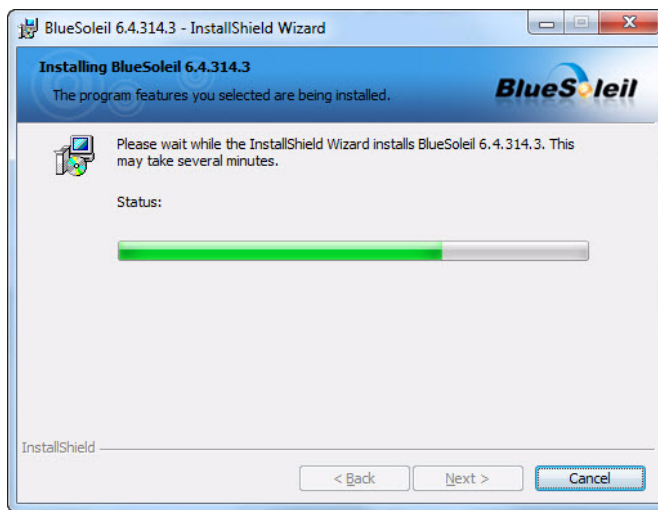
8. Read the agreement. Click the radio button, “I accept the terms in the license agreement.” and press **Enter (Next)** to continue the installation.
9. The Destination Folder screen displays. Verify the default location for the software installation. If necessary, use **Change** to select an alternate location.



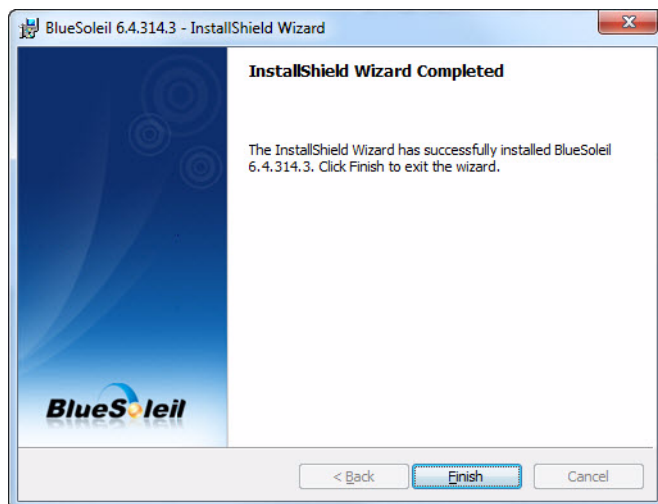
10. Press **Enter (Next)**. The Ready to Install the Program screen displays.



11. Press **Enter (Install)**. The Installing BlueSoleil screen displays while the software installs onto your computer.

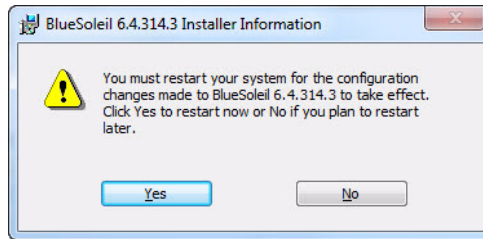


12. When the installation is complete, the InstallShield Wizard Completed screen displays.



13. Press **Enter (Finish)**.

14. You are prompted to restart your system. It is necessary to restart your computer to apply the BlueSoleil configuration. Remove the BlueSoleil CD and press Enter (**Yes**).



15. Continue with the next section in this chapter, "Install the BlueSoleil USB Adapter."


## Install the BlueSoleil USB Adapter

Install the BlueSoleil Bluetooth USB adapter on your computer. You must load the BlueSoleil software before installing the BlueSoleil USB adapter.

1. It is necessary to restart your computer after installing the BlueSoleil software. If you have not yet restarted your computer, restart it now. Ensure it is fully booted.
2. Insert the BlueSoleil USB Adapter into an available USB port on your computer.



*BlueSoleil USB Adapter*

- ⚠ The BlueSoleil USB adapter and Cirago adapter for the Diamante look similar. The BlueSoleil adapter is only operable in the computer and the Cirago adapter is only operable in the Diamante. The Luminex has built-in Bluetooth capability and does not use the Cirago adapter.
3. The device driver **automatically** installs. A message bubble may display when successful installation of the USB adapter device driver is complete.
  4. Click the Bluetooth icon  on the Windows SysTray at the bottom right of the screen and select **My Device Properties** from the menu. The My Device Properties dialog box displays.
  5. On the General tab, make the following entries:
    - *Device Name*—use the default name or type a new name to identify the computer. The Device name is the friendly name that is visible to other active Bluetooth devices, including the writing machine.
    - *Device Type*—select the option from the drop down list that best identifies this computer.
  6. Press **Enter (OK)** to close the dialog box. The computer is ready for BlueSoleil Bluetooth communication with the writing machine.
  7. Configure the writing machine for Bluetooth communication. Continue with the *Configuration* chapter.

## Configuration

Chapter 3, Configuration, guides you through the steps to configure the Luminex and Diamante for Bluetooth wireless realtime writing. It is necessary to install the BlueSoleil software and adapter on your computer before continuing with the configuration instructions in this chapter. See the *Installation* chapter for installation details.

The configuration process identifies the computer's address and generates a Passkey. The Passkey is a security code that allows your writing machine and the computer to communicate securely. You must use this code to establish an active wireless connection between the writing machine and your computer.

Generally, you only need to configure the writing machine once while using the same computer. Any time you change computers, you must repeat the configuration steps. A new unique Passkey code is required to establish Bluetooth wireless communication when the current computer is different than the one used for the previous connection.

Some computers may have security options that require the passkey to be entered each time. These security options assure a protected connection. Software does not need to be reinstalled when you are prompted each time for the passkey.

Complete the appropriate configuration steps for your writing machine contained within this chapter:

- “Configure the Luminex”
- “Configure the Diamante”

## Configure the Luminex

Complete the following steps to configure the Luminex, if this is the first time you are using your writing machine with Bluetooth communication or you have changed computers.

1. Turn your computer **On** and ensure it is fully booted.
2. On the Luminex, press **Setup, Wireless, Bluetooth**. The following Bluetooth Wireless message displays:

**Target Computer: Not Set**  
**Computer Name:**  
**Passkey: Not Set**

If **Bluetooth powered off** displays, touch the **On/Off** button to turn Bluetooth on.

3. Press **Configure**.
4. The following Bluetooth Wireless message displays along with a yellow progress bar. Searching may take a few moments longer after the progress bar reaches 100%.

**Searching For Remote Computers.**  
**Please Wait 60 Seconds...**

5. The Luminex searches for all computers in the area that have an active Bluetooth device. When the Luminex finishes searching, it displays the Computer's Bluetooth ID and friendly name for each active Bluetooth device located.

The Luminex can only connect with one computer. If multiple addresses display, use the **Up** and **Down** buttons to highlight the computer address to which you are writing realtime.

To verify the Bluetooth ID on the computer, click the Bluetooth icon in the Windows SysTray at the bottom of the screen and select **My Device Properties** from the menu. Click the **Hardware** tab and make a note of the *Device Address*.

6. Press **Select**. The following message displays:

**Target Computer: xx:xx:xx:xx:xx:xx**  
**Target Computer: *NameHere***  
**Passkey: xxxxxx**

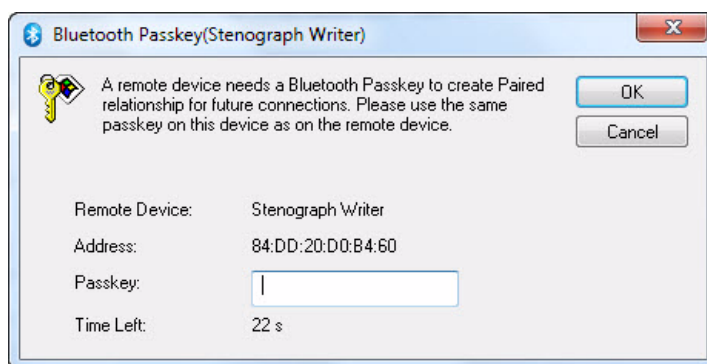
*(where x represents a digit.)*

Make a note of the *Passkey* number. You must enter this number on the computer to establish Bluetooth wireless connection between the Luminex and the computer.

7. Press **(Enter) OK**.



8. BlueSoleil Bluetooth software locates the Luminex, the Bluetooth Passkey(Stenograph Writer) dialog box displays.



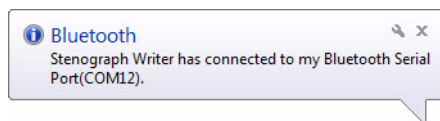
9. In the *Passkey* field, type the Passkey number from the Luminex and then press **Enter (OK)**.

You have 30 seconds to type the Passkey code. If you do not type the Passkey code within 30 seconds, the dialog box closes and, in a few moments, redisplay. The Bluetooth Service Authorization dialog box displays.

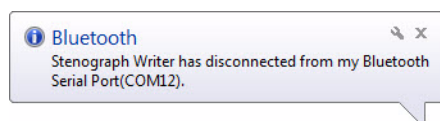
To bypass the authorization message in the future, check the box, **Always allow this device to access this service** and press **Enter (Yes)**.



10. After a few moments, the wireless connection is established. The Luminex connection displays as Stenograph Writer. The Bluetooth icon turns green indicating a Bluetooth wireless connection. The Windows SysTray at the bottom of the screen, may display a message indicating an established connection between the Luminex and the connected serial port number on your computer. This serial port number is used to configure the COM port setting for the Realtime options on your CAT system.



11. The wireless connection remains active until you terminate it. Termination occurs when you turn the Luminex Off or remove the BlueSoleil Bluetooth USB adapter from the computer.



12. Continue with the *Establish Realtime Connection* chapter to start Bluetooth wireless communication in Case CATalyst, including setting wireless Realtime Options.

## Configure the Diamante

Complete the following steps to configure the Diamante, if this is the first time you are using your writing machine with Bluetooth communication or you have changed computers.

1. Turn your computer **On** and ensure it is fully booted.
2. Insert the USB Bluetooth adapter into an available USB port on your computer. A message may display indicating that Bluetooth hardware is found.
3. Turn the Diamante **On**.
4. Insert the Cirago Bluetooth USB adapter, with the Cirago name facing down, into the USB A (host) port on the back of the Diamante.



*Cirago Bluetooth USB Adapter*



*Diamante with Cirago Adapter in USB A Port*

5. On the Diamante, press **Setup, Wireless, Bluetooth**. The following Bluetooth Wireless message displays:

**Target Computer: Not Set**  
**Computer Name:**  
**Passkey: Not Set**

6. Press **Configure**. The following Bluetooth Wireless message displays along with a yellow progress bar. Searching may take a few moments longer after the progress bar reaches 100%.

**Searching For Remote Computers.**  
**Please Wait 60 Seconds...**

7. The Diamante searches for all computers in the area that have an active Bluetooth device. When the Diamante finishes searching, it displays the Bluetooth ID and name for each active Bluetooth device located.

The Diamante can only connect with one computer. If multiple addresses display, use the **Up** and **Down** buttons to highlight the computer address to which you are writing realtime.

To verify the Bluetooth ID on the computer, click the Bluetooth icon in the Windows SysTray at the bottom of the screen and select **My Device Properties** from the menu. Click the **Hardware** tab and make a note of the *Device Address*.

8. Press **Select**. The following message displays:

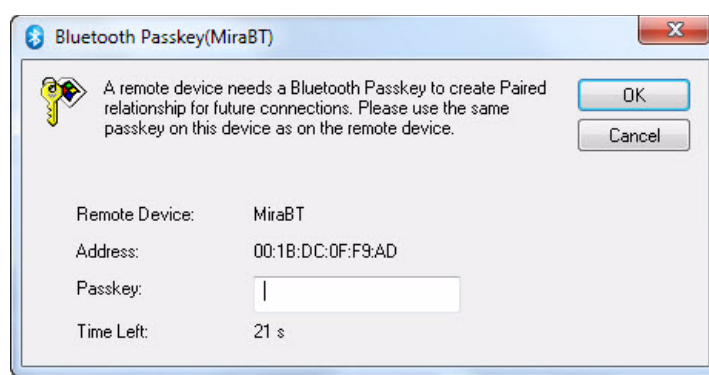
**Target Computer: xx:xx:xx:xx:xx:xx**  
**Target Computer: NameHere**  
**Passkey: xxxxxx**

*(where x represents a digit.)*

Make a note of the *Passkey* number. You must enter this number on the computer to establish Bluetooth wireless connection between the Diamante and the computer.

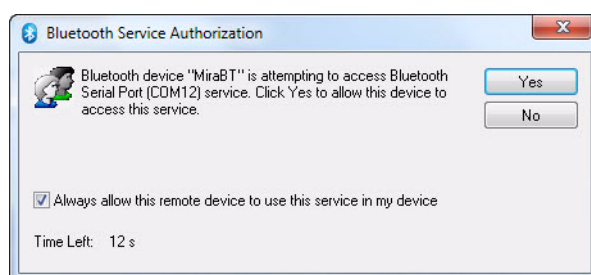
9. Press **(Enter) OK**.

10. Once the BlueSoleil Bluetooth software locates the Diamante, the Bluetooth Passkey(MiraBT) dialog box displays.



11. In the *Passkey* field, type the Passkey number from the Diamante and then press **Enter (OK)**.

You have 30 seconds to type the Passkey code. If you do not type the Passkey code within 30 seconds, the dialog box closes and, in a few moments, redisplay. The Bluetooth Service Authorization dialog box displays.



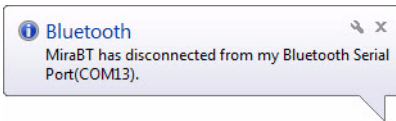
To bypass the authorization message in the future, check the box, **Always allow this device to access this service** and press **Enter (Yes)**.

12. After a few moments, the wireless connection is established. The Diamante connection displays as Mira BT. The Bluetooth icon turns green indicating Bluetooth wireless connection. The Windows SysTray at the bottom of the screen, may display a message indicating an established connection between the Diamante and

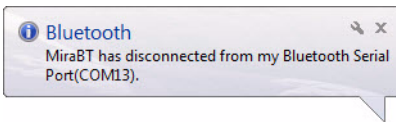
## Stenograph Bluetooth Wireless Communication Guide

---

the connected serial port number on your computer. This serial port number is used to configure the COM port setting for the Realtime options on your CAT system.



13. The wireless connection remains active until you terminate it. Termination occurs when you turn the Diamante Off, remove the BlueSoleil Bluetooth USB adapter from the computer or remove the Cirago Bluetooth USB adapter from the Diamante.



14. Continue with the *Establish Realtime Connection* chapter to start Bluetooth wireless communication in Case CATalyst, including setting wireless Realtime Options.

## *Establish Realtime Connection*

Chapter 4, Establish Realtime Communication, details the steps to set the Case CATalyst Realtime options for Bluetooth wireless communication and to start and end a Bluetooth wireless session.

To establish a wireless connection between the Luminex or Diamante, you must configure an initial connection between your computer and your writing machine. Once configured, BlueSoleil remembers the Passkey security code and automatically establishes communication with your writing machine unless your computer's security options require the Passkey to be entered each time. Any time you change computers, you must configure your writing machine to secure a new unique Passkey code. See the *Configuration* chapter in this guide for details on configuring your writing machine.

The range for wireless communication is approximately 100 meters or 300 feet. If you move the writing machine out of range, the wireless connection remains active. Any steno written is fed to the computer when you move the writing machine back into range. If you are using Case CATalyst, communication automatically reestablishes. For other CAT software users, reconnection may not automatically reestablish. For technical support in using Bluetooth wireless communication on CAT software other than Case CATalyst, contact your CAT vendor.

To start a Bluetooth wireless realtime session, refer to one of the following topics in this chapter:

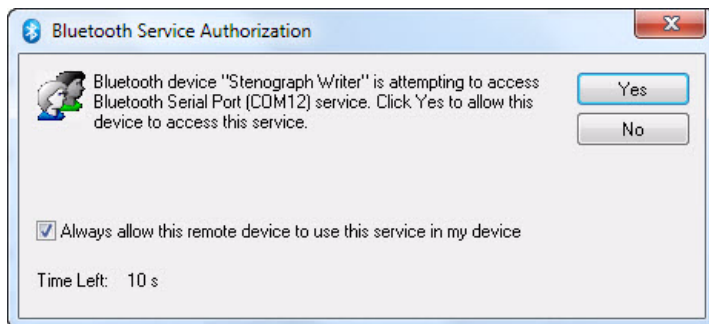
- Luminex
- Diamante

### Luminex

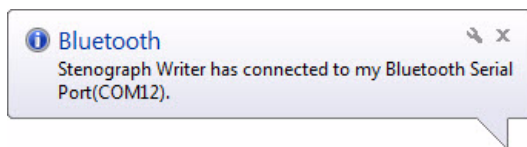
To begin a Bluetooth wireless realtime session:

1. Turn your computer **On**. Ensure it is fully booted.
2. Insert the BlueSoleil Bluetooth USB adapter into a USB port on your computer.
3. Turn the Luminex **On**.
4. When the Luminex locates the computer, the Bluetooth Service Authorization dialog box displays. Press **Enter (Yes)** to establish the Bluetooth wireless connection. To bypass the authorization message in the future, check the box, **Always allow the remote device to use this service in my device** and press **Enter (Yes)**.

If you previously checked the option, “Always allow this remote device to use this service in my device,” the Bluetooth Service Authorization dialog box does not display.



5. After a few moments, the wireless connection establishes. The Bluetooth icon turns green indicating a Bluetooth wireless connection. The Windows SysTray at the bottom of the screen may display a message indicating a connection between the Luminex and the connected serial port number on your computer. This serial port number must match the COM port selection in the Realtime options on your CAT system.



The wireless connection remains active until you terminate it. If you move your Luminex out of the 100 meter range for wireless communication, communication automatically reestablishes once the Luminex is within range. If the Luminex does not automatically reconnect, on the Luminex, in your file, press **More, Setup, Wireless, Bluetooth** and then **Reconnect**. All steno written while out of range is fed into the CAT system once you move within range and wireless communication is reestablished. For other CAT users, reconnection may not automatically reestablish. For technical support in using wireless communication on CAT software other than Case CATalyst, contact your CAT vendor.

6. Begin a realtime session.

#### Case CATalyst Users

Verify the correct settings for the following Translate Options on the Realtime tab:

- *Realtime Writer*—select **Stenograph Writer Serial/Bluetooth**. When using Case CATalyst 16.03 or lower, select **Diamante** or **élan**.
- *Comm Port*—select the appropriate COM port on the computer through which the Bluetooth wireless communication is active. If necessary, verify the COM port. Click the Bluetooth icon in the Windows SysTray at the bottom of the screen and select **My Device Properties** from the menu. Click the **Services** tab and verify the port number with *Connected* status.

### Other CAT Users

Select **élan** or **Stentura** as the type of realtime writing machine. Be sure your realtime options are properly set. Contact your CAT vendor for technical support in setting realtime options and writing realtime on your CAT system.

If it is necessary to verify the COM port, click the Bluetooth icon in the Windows SysTray at the bottom of the screen and select **My Device Properties** from the menu. Click the **Services** tab and verify the port number with *Connected* status.

7. When finished writing realtime, press **End** on the Luminex.
8. Turn the Luminex **Off**.
9. Once the wireless connection terminates, a disconnection message displays after a few moments.



10. When you turn the Luminex On in range of the computer, the Bluetooth technology automatically connects the devices.

### Diamante

To begin a Bluetooth wireless realtime session:

1. Turn your computer **On**. Ensure it is fully booted.
2. Insert the BlueSoleil Bluetooth USB adapter into a USB port on your computer. If you are using Windows XP, insert the adapter into the USB port on which you loaded the device driver for the adapter.
3. Turn the Diamante **On**.
4. Insert the Cirago Bluetooth USB adapter, with the Cirago name facing down, into the USB A (host) port on the back of the Diamante.



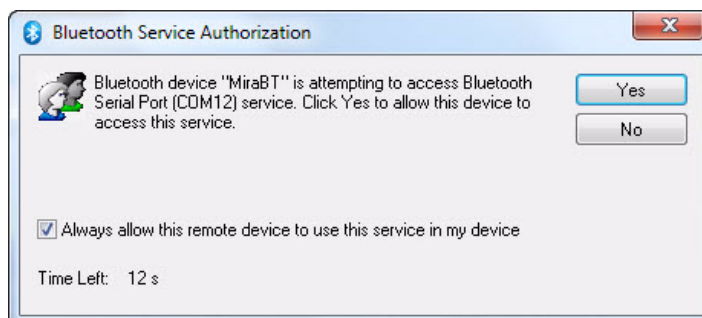
*Cirago Bluetooth USB Adapter*



*Diamante with Cirago Adapter in USB A Port*

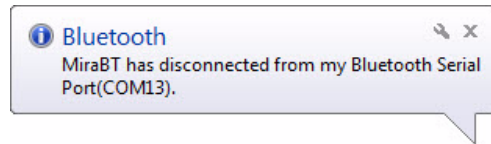
5. When the Diamante locates the computer, the Bluetooth Service Authorization dialog box displays. Press **Enter (Yes)** to establish the Bluetooth wireless connection. To bypass the authorization message in the future, check the box, **Always allow this device to access this service** and press **Enter (Yes)**.

If you previously checked the option, “Always allow this remote device to use this service in my device,” the Bluetooth Service Authorization dialog box does not display.





6. After a few moments, the wireless connection establishes. The Bluetooth icon turns green indicating Bluetooth wireless connection. The Windows SysTray at the bottom of the screen may display a message indicating a connection between the Diamante and the connected serial port number on your computer. This serial port number must match the COM port selection in the Realtime options on your CAT system.



The wireless connection remains active until you terminate it. If you move your Diamante out of the 100 meter range for wireless communication, communication automatically reestablishes once the Diamante is within range. All steno written while out of range is fed into the CAT system once you move within range and wireless communication is reestablished. For other CAT users, reconnection may not automatically reestablish. For technical support in using wireless communication on CAT software other than Case CATalyst, contact your CAT vendor.

7. Begin a realtime session.

### Case CATalyst Users

Verify the correct settings for the following Translate Options on the Realtime tab:

- *Realtime Writer*—select **Stenograph Writer Serial/Bluetooth**. When using Case CATalyst 16.03 or lower, select **Diamante** or **élan**.
- *Comm Port*—select the appropriate COM port on the computer through which the Bluetooth wireless communication is active. If necessary, verify the COM port. Click the Bluetooth icon in the Windows SysTray at the bottom of the screen and select **My Device Properties** from the menu. Click the **Services** tab and verify the port number with *Connected* status.

### Other CAT Users

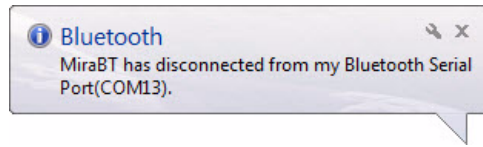
Select **élan** or **Stentura** as the type of realtime writing machine. Be sure your realtime options are properly set. Contact your CAT vendor for technical support in setting realtime options and writing realtime on your CAT system.

If it is necessary to verify the COM port, click the Bluetooth icon in the Windows SysTray at the bottom of the screen and select **My Device Properties** from the menu. Click the **Services** tab and verify the port number with *Connected* status.

8. When finished writing realtime, press **End** on the Diamante.

9. Turn the Diamante **Off**.

10. Once the wireless connection terminates, a disconnection message displays after a few moments.



✎ When you turn the Diamante On in range of the computer, the Bluetooth technology automatically connects the devices. To prevent reconnection, remove the Cirago Bluetooth USB device from the Diamante.

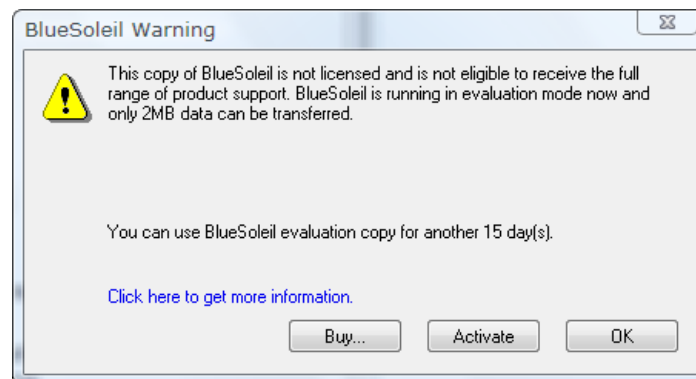
## Troubleshooting

Chapter 4, Troubleshooting, suggests possible solutions to some common situations encountered when using BlueSoleil software. Most users can remedy the following situations themselves. For more troubleshooting information, connect to the Stenograph web site, [www.stenograph.com](http://www.stenograph.com). On the Stenograph web site, click **Support, Solution Center**. If a problem persists, call Stenograph Technical Support at **800-323-4247**.

### Error Messages

#### Copy of BlueSoleil is Not Licensed

In attempting to start BlueSoleil Bluetooth connection, the message similar to the following displays:



#### Solution

The Cirago Bluetooth USB adapter has been inserted into the computer instead of the Diamante. Remove the Cirago Bluetooth adapter from the computer and insert it, Cirago name facing down, into the Diamante USB A (host) port.

#### Solution

BlueSoleil recognizes the built-in Bluetooth and not the BlueSoleil USB device when it is attached to the computer. Do the following:

1. Turn off or disable your built-in Bluetooth. If necessary contact your respective hardware vendor for assistance. If, in the rare circumstance, the computer hardware does not allow you to turn off or disable the built-in Bluetooth, continue to complete the following steps.
2. Uninstall the BlueSoleil software. Insert the BlueSoleil CD into the CD-ROM/DVD drive. At the Choose Language screen press **Enter (OK)**. The BlueSoleil Wizard installs. Follow the prompts to remove the BlueSoleil software.
3. Reinstall the BlueSoleil software. Follow the instructions in the *Installation* chapter.

If the computer hardware does not allow you to turn off or disable the built-in Bluetooth, insert the BlueSoleil USB device into the computer after boot up but before beginning installation.

4. Once the BlueSoleil software installation completes, Stenograph suggests you leave your built-in Bluetooth turned off/disabled. The BlueSoleil software should now recognize the BlueSoleil USB device before the built-in Bluetooth.

### Wireless Adapter Not Found (Diamante)

The following Diamante message displays:

**Wireless Adapter Not Found  
Please Disconnect Adapter. Then reconnect it.**

#### Solution

Remove the Cirago Bluetooth USB adapter from the Diamante and reinsert it into the writing machine.

### Technical Support

Review troubleshooting topics for your writing machine on the Stenograph web site, [www.stenograph.com](http://www.stenograph.com), for other possible solutions to your problem. On the Stenograph web site, click **Support, Solution Center**. If a problem persists, call Stenograph Technical Support at **800-323-4247** or **1-630-532-5100**.

If you encounter a problem you cannot solve, a Stenograph writing machine Specialist is available to help you. To assist the Specialist, know your customer number and be prepared to describe your question or problem in detail. Contact Technical Support for your writing machine at:

**1-800-323-4247, press 2, then 2**

**8:00 a.m. to 6:00 p.m. (CT)**

**Monday through Friday**

**Excluding Stenograph Holidays**





***Stenograph***<sup>®</sup>

[www.stenograph.com](http://www.stenograph.com)

---

**38920**



**Combined Bluetooth Guide**